

PRECISION

WEATHER INSTRUMENTS

WEATHER MONITORING SYSTEMS FOR HOME, SCHOOL, INDUSTRY & AGRICULTURE



NEW!

Vantage Connect & Vantage Connect Retrofit Kit *(page 12)*

Integrated Pest Management Module for Apples & Pears *(page 22)*

WeatherLink Network Annual Subscription *(page 21)*

From Elegantly Simple to the Ultimate in Flexibility.

All Davis Instruments weather stations are designed to provide the high level of accuracy, reliability and ruggedness our customers have come to expect. But they are also designed to suit a wide range of weather observers' needs. Whether you are a weather hobbyist watching the weather for the pure fun of it, or someone reliant on accurate weather data for farming, research or business, you will find a Davis weather system to meet your needs.

Which Davis Weather Station is Right for You?

Weather enthusiasts want an accurate, reliable weather station that is easy to install and use. We've designed our Vantage Vue and Vantage Pro2 weather stations—with their integrated sensor suites, information-packed consoles, and long wireless distance—and WeatherLink software to meet those needs.

Some users also want to be able to create a customized weather system with add-on sensors, transmitters and receivers, more extensive data logging capabilities, specialized software, and remote communication options. In designing such a system, it is important to know how to mix and match sensors, transmitters and receivers, and what options can be used for remote communications. On pages 24–25, you'll find a few case studies of typical users to help you identify which components will give you the data you need, when and how you want to receive it.

We've also included a small icon on each product that identifies it as a sensor, transmitter, repeater, receiver, or software. Compatibility charts on pages 18 and 19 will help you design the perfect weather system for your special needs. You can, of course, call us at 510-732-7814 and our technical staff would be happy to assist you.



What's New?

Vantage Connect™ gives even the most remote weather station the ability to report data via a cellular connection. (Page 12)

Vantage Connect Retrofit Kit allows you to turn your existing console into a Vantage Connect cellular modem. (Page 12)

Integrated Pest Management Module for Apples and Pears offers apple and pear growers a powerful assessment of the risk of pest damage based on real time weather in their orchards. (Page 22)

WeatherLink Network Annual Subscription makes any Davis weather station into a WeatherLink.com station. (Page 21)

We've also included a peek at our automotive line of products, including our new **CarChip Connect®**. (Page 29)

Look for these additional symbols



Identifies the stations or sensors that may be NIST traceable. See page 26 for details.



Identifies stations suitable for use with GLOBE protocol. See page 26 for details.

Table of Contents

What's new in this catalog	2
Which Davis weather station is right for you	2
Complete Weather Station Systems	
Vantage Vue	4-5
Vantage Pro2.....	6-7
Choose the right station.....	8
Additional console/receivers	9
Mounting options.....	9
Receivers, Transmitters and Sensors	
Weather Envoy	10
Envoy8X	11
Vantage Connect and Vantage Connect Retrofit Kit (Coming Soon)	12
Vantage Vue and Vantage Pro2 Integrated Sensor Suites	13
Special purpose stations	13
Sensors: UV, solar, rain, wind, temperature, leaf wetness, soil moisture	14
Accessories	
Repeaters.....	15
Shelters, solar power, rain collector heater, radiation shield	16
Installation diagrams, cables	17
Handheld wind speed indicators.....	18
Compatibility Charts	
Sensor to Transmitter chart	18
Transmitter to Receiver chart.....	19
Software	
WeatherLink/WeatherLinkIP/WeatherLink Network Annual Subscription.....	20, 21, 23
Add-on software modules	22
Integrated Pest Management Modules.....	22
Additional WeatherLink modules	22
Case studies.....	24-25
Vantage console features.....	26
Weather station sensor accuracy, resolution and range	27
Things to consider when purchasing a weather station	28
CarChip Connect (Coming Soon) and CarChip Pro	29-31
Warranty and return policy.....	31

Contact Us

Please contact one of our customer service representatives if you have any questions. We're always glad to help.

Customer Service

Toll-Free Order Line:

(800) 678-3669

Fax: (510) 670-0589

E-mail: sales@davisnet.com

Monday-Friday, 7:00 a.m.- 5:30 p.m.

Pacific Time.

Our representatives can answer most questions and assist you with your purchase.

Outside the USA or Canada:

(510) 732-9229

Technical questions/troubleshooting:

Phone: (510) 732-7814

Fax: (510) 670-0589

E-mail: support@davisnet.com

Monday-Friday, 7:00 a.m.- 5:30 p.m.

Pacific Time.

General:

Phone: (510) 732-9229

Website: www.davisnet.com

E-mail: info@davisnet.com

For information on the WeatherLink Network go to www.weatherlink.com

For information on Vantage Vue go to www.vantagevue.com

For information on CarChip Pro go to www.carchip.com



Vantage Vue: Perfect for the home weather-watcher.

Our newest weather station provides accurate, reliable weather monitoring in a self-contained, easy-to-install system. Vantage Vue® gives you all the weather data you need. Sleek but tough—your outdoor sensor suite sets up in minutes and starts sending data wirelessly to your console anywhere in your home, school or business. You'll see current weather conditions, including indoor and outdoor temperature and humidity, barometric pressure, wind speed and direction, dew point and rainfall. You'll also get weather forecast icons, moon phase, sunrise/sunset times, graphing of weather trends, alarms and more. Vantage Vue also boasts the innovative Weather Center button that displays additional data on weather variables for today and over the last 25 days.

Features:

- Easy-to-read, backlit 3" × 4¾" (8 × 11 cm) LCD screen
- Glow-in-the-dark keypad
- Fast updates every 2.5 seconds (10x faster than the competition)
- Optional WeatherLink® data logger and software offer additional analyses in a variety of versions
- Wireless transmission from station to console up to 1,000 ft. (300 m) (3x farther than the competition)

1. TIME & DATE

View the current time and date or time of sunrise/sunset.

2. MOON PHASE

See the eight phases of the moon.

3. FORECAST

Icons let you know to expect sun, partly cloudy, clouds, rain, or snow.

4. TEMPERATURE & HUMIDITY

Console updates outside temperature every 10 seconds and inside temperature every minute. In addition, outside humidity updates every 50 seconds and inside humidity every minute.

5. RETRANSMITS

Main console can extend range to additional consoles up to 1,000 ft. (300 m).

6. BAROMETER

Five-position trend arrow shows whether barometric pressure is rising, falling, or stable.

7. VARIABLE DISPLAY OPTIONS

See updated values every 10 seconds for heat index and wind chill to get a better "feel" for the outside environment.

8. RAIN

Console updates rain totals and rain rate every 20 seconds for the last 25 hours, days, months.

9. "CHANGE IN WEATHER SINCE YESTERDAY" FEATURE

Allows comparisons of changes of temperature and barometric pressure from day to day.

10. WEATHER CENTER

Weather Center provides additional information for each weather variable, such as daily highs and lows, temperature

changes by the hour and barometric value changes. Also displays astronomical data such as meteor showers.

11. USER-FRIENDLY KEYPAD

Domed buttons are easy to feel and press. Glow-in-the-dark keypad buttons give you access to weather information at night. The "Done" key returns user to "current" screen from anywhere in the program.

12. GRAPHS

Graph the last 25 hours, days or months. View up to 50 graphs including temperature, rain, rain rate, wind and barometric pressure—all on the console.

13. "THIS TIME YESTERDAY" FEATURE

Data point on the graph indicates the weather during the same time yesterday to help compare and analyze day-to-day weather trends.

14. ALARMS

Set 22 simultaneous, different alarms to warn of dangers such as high winds, freezing temperatures, rain rate, heat index, flood warning, and more.

15. WIND SPEED

See windspeed updates every 2½ seconds. Displays windspeed in miles per hour, meters per second, kilometers per hour or knots. Provides the average and high wind speed for two-minute and ten-minute intervals.



View your weather data on your computer.

See our WeatherLink software on page 20.



Multiple features included at an affordable price.

Vantage Vue includes a compact outdoor sensor array and an indoor LCD console. The fully-integrated, corrosion-proof sensor suite is built to take all the weather your location can give—freezing winters, springtime thunderstorms, blistering summer sun, and brisk autumn winds. The smaller profile sensor suite is designed to minimize visual impact in your yard or on your roof.

The sensor suite transmits data wirelessly to the easy-to-read Vantage Vue console. With a range of up to 1,000 feet (300 m), Vantage Vue data packets are sent every 2.5 seconds to the console. Because Vantage Vue's transmitters are radio-compatible with Vantage Pro2, you can mix and match components. For example, add a Vantage Vue console to your Vantage Pro2 system or extend your wireless range with long and short range repeaters. They all work together seamlessly. See www.vantagevue.com for more information.

6250 Vantage Vue \$395
PATENTED



1. WIRELESS

Frequency-hopping spread spectrum radio ensures consistent transmission up to 1,000 ft. (300 m) line-of-sight from integrated sensor suite to console.

2. RAIN COLLECTOR

Self-emptying tipping spoon measures rain in 0.01" increments. Metric version measures in 0.2 mm increments.

3. ANEMOMETER

Records wind speeds as low as 2 mph (3 km/h) and is wind tunnel-tested to 180 mph (290 km/h).

4. WEATHER-PROOF HOUSING

Corrosion-resistant cover provides durability in

extreme conditions. Electronics are potted or over-molded for added moisture shielding.

5. RADIATION SHIELD

Provides excellent protection from solar radiation and other sources of radiated and reflected heat for accurate temperature and humidity readings.

6. TEMPERATURE/RELATIVE HUMIDITY

Provides outside temperature readings from

-40° F to 150° F (-40° C to 65° C). Also measures relative humidity from 1 to 100%.

7. EASY INSTALLATION

Installs easily and quickly with included mounting hardware kit.

8. WIND DIRECTION

Measures wind direction in compass points or degrees.

9. SOLAR PANEL

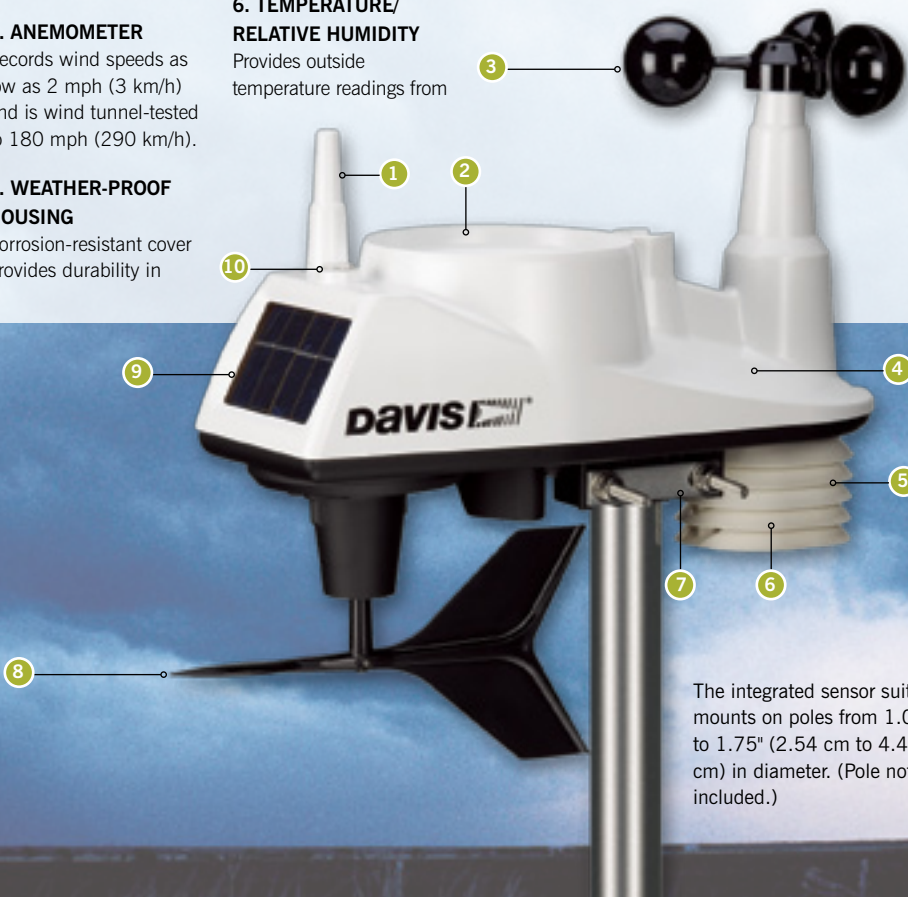
Energizes the station during the day. On-board super capacitor provides power at night. Lithium battery provides backup when needed.

10. BUILT-IN BUBBLE LEVEL

Allows for more accurate installation and better data collection.



6250 Vantage Vue



The integrated sensor suite mounts on poles from 1.0" to 1.75" (2.54 cm to 4.45 cm) in diameter. (Pole not included.)

Vantage Pro2: Professional and rugged.

Vantage Pro2™ offers the professional weather observer and the serious weather enthusiast rugged performance and a wide range of options and sensors. You'll get your own local forecast, highs and lows, totals or averages, and graphs for virtually all weather variables over the past 24 days, months or years—all without using a PC. Vantage Pro2 uses frequency-hopping spread spectrum radio to transmit and receive data up to 1,000 feet (300 m) line-of-sight. Vantage Pro2 is also an excellent choice for emergency professionals, farmers, schools, researchers, municipalities, and others to monitor wind and moisture conditions, irrigation requirements, and potential flooding. It can be customized with a range of add-on options, such as solar and UV radiation sensors, soil moisture stations, and long and short-range repeaters.

Features:

- Large, backlit 3½" × 6" (9 × 15 cm) LCD screen
- Options available for UV/solar, soil moisture, short and long-range repeaters, and more
- Fast updates every 2.5 seconds (10x faster than the competition)
- Optional WeatherLink data logger and software offer additional analyses in a variety of versions
- Wireless transmission from station to console up to 1,000 ft. (300 m) (3x farther than the competition)

1. CURRENT & HISTORICAL DATA

View current data or highs and lows for up to 24 days, months, or years.

2. FORECAST

Icons let you know what to expect: sun, partly cloudy, rain, or snow. 12-hour icon forecast plus 24–48 hour ticker-tape forecast at bottom of console screen.

3. MOON PHASE

Track the eight phases of the moon.

4. TIME & DATE

View the current time and date, time of sunrise/sunset, time and date of highs/lows, and time and date of a graphed data point.

5. WIRELESS

Frequency-hopping, spread spectrum radio provides three times the transmission distance of the competition, improved reception through multiple walls, and greater immunity from RF interference.

6. RETRANSMITS

Main console can retransmit to additional consoles up to 1,000 ft. (300 m).

7. BAROMETER

Five-position trend arrow shows whether barometric pressure is rising, falling, or steady.

8. FIXED DISPLAY

Fixed display area shows the outside temperature, humidity and barometric pressure at all times.

9. SOLAR RADIATION

On Vantage Pro2 Plus, view solar radiation, highs for the day, month, and year as well as evapotranspiration and Temp/Hum/Sun/Wind (THSW) index. Set alarms for high readings.

10. UV

On Vantage Pro2 Plus, view current UV index, UV index for the day, the daily, monthly, and yearly highs; or change scale to see UV in current, hourly

and daily MEDs. Set alarm to warn of high UV dose/index.

11. VARIABLE DISPLAY OPTIONS

View inside or additional temperatures, humidity, soil moisture, UV index, leaf wetness, wind chill, dew point, and two different heat indices. (Additional sensors or stations may be required.)

12. RAIN

Umbrella icon appears when it is currently raining. View last 24 storm totals with start and end dates. View daily, monthly, or yearly rainfall, and rain rate.

13. STATUS INDICATOR

Blinks to let you know that data packets are being received.

14. CONTROL KEYS

Use arrow keys to scroll through data on graph or view highs and lows over time. Plus and minus keys simplify data toggling.

15. TICKER-TAPE DISPLAY

Provides expanded forecast details and additional information on current conditions. Displays more than 100 different messages!

16. GRAPHS

Graph the last 24 hours, days, or months of readings or highs and lows. View over 80 graphs, including additional analyses of temperature, rain, rain rate, wind and barometric pressure.

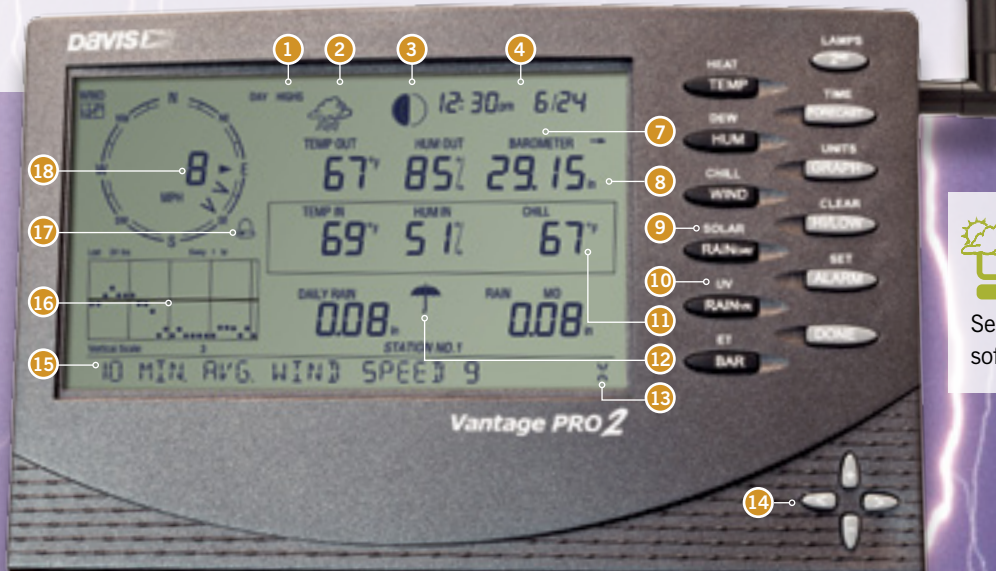
Vertical scale changes depending on what you are graphing.

17. ALARMS

Set more than 70 alarms for multiple functions simultaneously.

18. WIND

Compass rose with 16 points shows current and dominant wind direction. Inside compass rose, view wind direction to 1° resolution, or view wind speed.



 View your weather data on your computer. See our WeatherLink software on page 20.

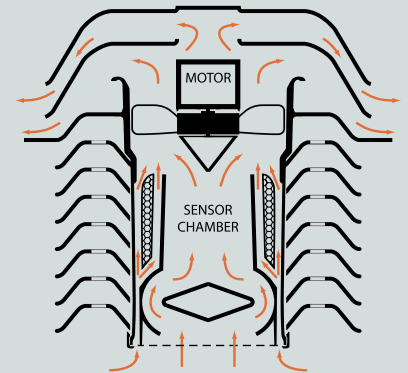
The ultimate in versatility and options.

All Vantage Pro2 stations include a console and a versatile integrated sensor suite that combines our rain collector, temperature and humidity sensors and anemometer into one package. You can customize your Vantage Pro2 by adding consoles or the special-purpose options shown on the following pages. Vantage Pro2 weather stations are available in both wireless and cabled versions.

Vantage Pro2 stations: From \$495 (See page 8 for models and prices.)

PATENTED

NIST



1. RAIN COLLECTOR

The Vantage Pro2 rain collector meets the collection area guidelines of the World Meteorological Organization. Reads rainfall amounts in 0.01" increments. Metric versions measure in 0.2 mm increments.

2. ANEMOMETER

Includes both wind speed and wind direction sensors. Rugged components stand up to hurricane-force winds, yet are sensitive to the lightest breeze. Wind tunnel-tested to 180 mph (290 km/h).

Anemometer can be installed separately using 40 ft. (12 m) cable (included).

Optional Anemometer/Sensor Transmitter Kit allows you to mount the anemometer in a different location than the rain collector and the rest of the integrated sensor suite, up to 1,000 ft. (300 m) from your wireless console.

3. OPTIONAL MOUNTING POLE

One of several installation options. For more, including our mounting tripod, see page 9.

4. 24-HOUR FAN-ASPIRATED RADIATION SHIELD

Models with 24-hour fan-aspirated radiation shields include additional radiation shield plates and a second solar panel, which powers the motor-driven fan.

5. TEMPERATURE & HUMIDITY SENSORS

Located inside the radiation shield, which protects the sensors from solar radiation and other sources of radiated and reflected heat.

6. SOLAR PANEL

Powers the wireless station during the day and charges the super capacitor for night operation. Lithium battery provides backup on cloudy, wintry days. (Solar panel is not included with cabled version.)

7. WEATHER-RESISTANT SHELTER

Provides protection against the elements for the integrated sensor suite's electronic components.



The aluminum-plated tipping bucket in our rain collector is self-emptying, corrosion resistant, and laser calibrated for exceptional accuracy.

24-Hour Fan-Aspirated Radiation Shield

Models 6153 and 6163 include our patented 24-hour fan-aspirated radiation shield for maximum accuracy of temperature and humidity readings. A motor-driven fan draws air through the sensor chamber 24 hours a day, 7 days a week. Airflow across the sensors is 500 feet per minute (2.5 m/s). At night, when the effects of radiation are less, the solar-powered model runs on battery power and the airflow is 280 feet per minute (1.4 m/s). In far northern or southern latitudes, or in areas with extended periods of heavy cloud cover, there may not be enough sunshine to power the fan or recharge the battery during the winter. However, as the level of sunlight goes down, the need for fan aspiration also diminishes. The fan will start running and the battery will recharge as soon as sufficient sunlight returns.



6152 Wireless Vantage Pro2

Now includes built-in bubble level for more accurate installation.

pictured:
6163 Wireless Vantage Pro2 Plus with 24-Hour Fan-Aspirated Radiation Shield

Choose the station that's right for you—from 7 different Vantage models.

Vantage Vue



Vantage Pro2



Vantage Pro2 Plus



<p>Davis accuracy in a self-contained, easy-to-install system.</p> <p>Includes solar-powered transmitter.</p>	<p>Create a customized professional station with a wide range of options and sensors. Solar-powered transmitter and detachable anemometer.</p> <p>Choose a cabled station for most economical installation. Ideal for areas where lightning risk is minimal. Choose wireless for easiest installation, additional sensor options, and reduced risk of lightning damage.</p>			<p>Includes UV & solar radiation sensors.</p> <p>24-hour fan aspiration model achieves maximum accuracy of temperature & humidity readings by circulating the air. Ideal for arid climates.</p>		
---	---	--	--	---	--	--

<p>The Davis line of Vantage weather stations is built to provide a full weather system. To maximize your weather watching, a variety of additional sensors and stations are available to make your weather station even more comprehensive.</p>	<p>6250 Wireless</p> <p>\$395</p>	<p>6152C Cabled</p> <p>\$495</p>	<p>6152 Wireless</p> <p>\$595</p>	<p>6153 Wireless w/Fan</p> <p>\$795</p>	<p>6162C Cabled</p> <p>\$895</p>	<p>6162 Wireless</p> <p>\$995</p>	<p>6163 Wireless w/Fan</p> <p>\$1195</p>
CONSOLE							
Should be run using the included AC-power adapter. Add three C batteries (not included) for backup during power outages.		•			•		
May be run full-time using three C batteries (not included). May also be run using the included AC-power adapter.	•		•	•		•	•
12-hour advance forecast icons	•	•	•	•	•	•	•
24-48 hour advance forecast ticker-tape		•	•	•	•	•	•
Weather center with scroll-through data screens	•						
INTEGRATED SENSOR SUITE							
Rain collector, temperature and humidity sensors and anemometer	•	•	•	•	•	•	•
Detachable anemometer with 40 ft. (12 m) of cable		•	•	•	•	•	•
UV and Solar Radiation Sensors		Optional	Optional	Optional	•	•	•
DATA TRANSFER							
100' (30 m) cable		•			•		
Solar-powered transmitter with battery backup	•		•	•		•	•
RADIATION SHIELD							
Standard radiation shield	•	•	•		•	•	
Daytime Fan-Aspirated Radiation Shield		Optional	Optional		Optional	Optional	
24-hour Fan-Aspirated Radiation Shield				•			•
ADD-ONS							
Additional consoles to view data in more than one location	Optional		Optional	Optional		Optional	Optional
Special-purpose Wireless Leaf & Soil Moisture/Temperature Station			Optional	Optional		Optional	Optional
Wireless Temperature Station			Optional	Optional		Optional	Optional
Wireless Temperature/Humidity Station			Optional	Optional		Optional	Optional
Anemometer/Sensor Transmitter Kit			Optional	Optional		Optional	Optional

Add another console and get the weather report wherever you are.

Vantage Vue and Wireless Vantage Pro2 Console/Receivers

Add additional Vantage Pro2 or Vantage Vue consoles to display weather data in the den, bedroom, kitchen, or even in your neighbor's house, if it's closer than 1,000 ft. (300 m). Vantage Vue transmitters are radio-compatible with Vantage Pro2 so you can mix and match components. Receive data directly from the outdoor sensors or use as a repeater, retransmitting the data from one console/receiver to another, extending range up to another 1,000 ft. (300 m). With Vantage Pro2 only, an additional console can receive data directly from any of our special-purpose wireless outdoor sensors (see pages 13 and 14).

6351 Vantage Vue Console/Receiver \$195



6312 Wireless Vantage Pro2 Console/Receiver \$295



- Larger display for easy-to-read weather data
- Special-purpose sensors expand data collecting

Customize your installation.

Weather station customers need flexibility when they're deciding how to install their equipment. With that in mind, Davis provides a variety of installation options to suit any weather station owner's needs.



Daytime Fan-Aspirated Radiation Shield Kit

An economical solution for adding the benefits of fan aspiration by retrofitting your wireless or cabled Vantage Pro2 or Pro2 Plus. Less costly than our 24-hour fan-aspirated radiation shield, but nearly 75% as effective in reducing the effects of daytime radiation. Solar-powered fan runs during the day. Since there is no backup battery, the fan will cease running when night falls and the effects of radiation are less. Kit includes fan, solar panel, additional radiation shield plates, and hardware.

7747 Daytime Fan-Aspirated Radiation Shield Kit \$135

PATENTED



Mounting Pole Kit

Includes two galvanized steel poles, connector, and mounting hardware. Poles measure 19.5" (0.50 m) and 21" (0.53 m) long. Assemble the two together to make a single 37.5" (0.95 m) long pole. Outside diameter is 1 5/16" (33 mm). Fits both Vantage Pro2 and Vantage Vue.

7717 Mounting Pole Kit \$35



Mounting Tripod

Made of galvanized steel. Brackets at the base of legs tilt to mount on a roof or uneven terrain. Two poles included measure 36.38" (0.92 m) each, but can also be used together to make a single 69.75" (1.77 m) pole. Fits both Vantage Pro2 and Vantage Vue.

7716 Mounting Tripod \$75



Free up your console—send data directly from outdoor sensors to your computer with Envoy.

Weather Envoy™

Weather Envoy, when used along with WeatherLink software, will collect and store the same data set as a Vantage Pro2 console. Connect it to your computer with hardware included with WeatherLink for easy and convenient downloading without a console/receiver. Use WeatherLink's automatic download feature, or manually download to your computer at your convenience, then use the WeatherLink software to view current conditions, graph and chart historical data, or even create your own weather web pages. (Also compatible with WeatherLinkIP.)

Like the wireless Vantage Pro2 console, wireless Weather Envoy can listen to up to 8 transmitters. However, the maximum number of each type of transmitter is limited (see comparison table on page 11).

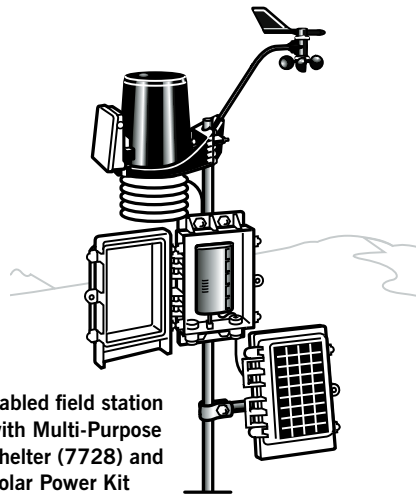
It can also retransmit data to the console, effectively extending your station's range.

Weather Envoy includes its own barometer and inside temperature and humidity sensors. You may connect an external temperature probe (6475 or 6477) to replace the Envoy's internal temperature probe (see page 14). Both the wireless and cabled versions include an AC-power adapter. Either may also be run using one of our solar power kits. The wireless model can also run on three AA batteries. Expected battery life is four to six months depending on the logging interval. Batteries should also be added to the cabled model for backup during power outages. **Requires WeatherLink (any model)**

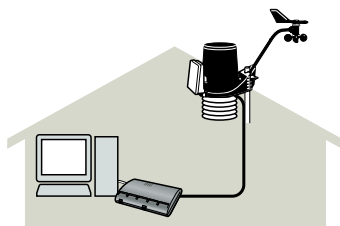
6316 Wireless Weather Envoy \$195
6316C Cabled Weather Envoy \$165



Cabled Weather Envoy



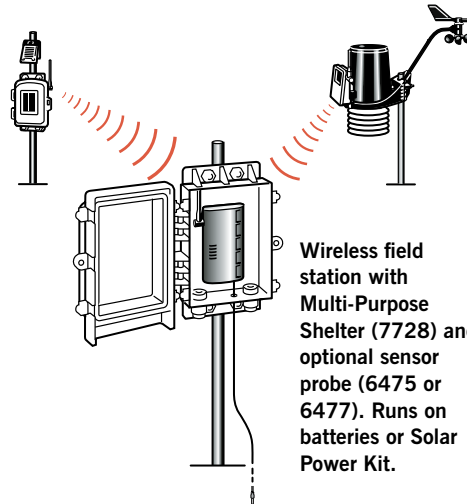
Cabled field station with Multi-Purpose Shelter (7728) and Solar Power Kit (7707).



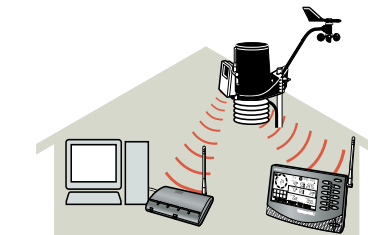
Can be used with one cabled ISS

Wireless Weather Envoy and Envoy8X

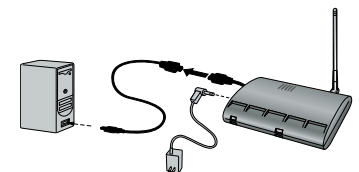
Can listen to up to 8 transmitting stations



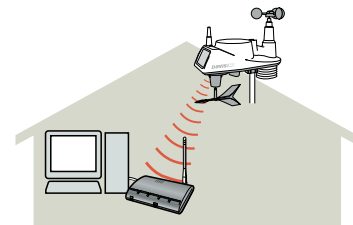
Wireless field station with Multi-Purpose Shelter (7728) and optional sensor probe (6475 or 6477). Runs on batteries or Solar Power Kit.



Transmit to both Envoy and console



Install Envoy next to your computer using included USB cable and AC adapter.



Wireless Home/Office Station



Retransmit data to Envoy from console

Envoy8X: Designed for customers with multiple stations and lots of data.

Envoy8X™

With 32 times the memory of our Weather Envoy, Envoy8X receives and logs data simultaneously from up to eight transmitting stations, in any combination—even eight Integrated Sensor Suites or eight Leaf Wetness & Soil Moisture/Temperature Stations! Doing the math, that means you can get data from 32 soil moisture sensors on one Envoy8X! Includes robust software that allows for data from many sensors and multiple Envoy8Xs to produce very large databases in Microsoft Access®, MySQL®, or Microsoft SQL Server®. You select which sensors to log, and choose a logging interval from 10 seconds to 2 hours. You can even add select third-party sensors that report readings in a 0–3 volt range. Data can be easily exported to

a spreadsheet program such as Excel®, or to WeatherLink to take advantage of WeatherLink’s graphing and reports.

Storage capacity depends upon the logging interval, but is so large that you can download a remote field installation when it’s most convenient. For example, an Envoy8X logging two Integrated Sensor Suites and two Soil Moisture/Leaf Wetness stations at a 15-minute update interval will store **over 365 days** worth of data.

Envoy8X has built-in temperature and humidity sensors, as well as a barometer. The software will report data from those sensors as “inside” data, effectively giving you a ninth “station.” You may connect an external temperature probe (6475 or 6477) to replace the Envoy8X’s internal temperature probe (see page 14). Receives

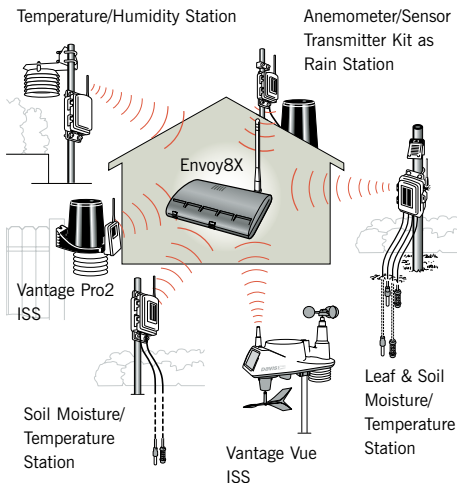
data from all Vantage Pro2 and Vantage Vue radios and repeaters. Includes an AC-power adapter; may also be run using Solar Power Kit (7707), or on three AA batteries. Expected battery life is one to four months depending on the logging interval. **Requires WeatherLink for Windows (USB or Serial). Not compatible with Vantage Connect.**

6318 Envoy8X \$295



Envoy8X logs data from all your transmitters

Can listen to as many as 8 transmitting stations in any combination



Envoy8X Software System Requirements:

Windows® XP, Vista™ or 7 operating system; 32 MB memory (64 MB recommended); VGA/SVGA monitor (800 x 600 or higher recommended). MS Access run-time engine is included. MS Excel, MySQL and SQL Server are not included.

Features	Weather Envoy	Envoy8X
Can listen to up to 8 transmitters	Yes	Yes
Maximum number of Integrated Sensor Suites (ISS)	1	8
Maximum number of Anemometer/Sensor Transmitter Kits	1*	8
Maximum number of Leaf & Soil Moisture/Temperature Stations	1**	8
Maximum number of Temperature Stations	3	8
Maximum number of Temperature/Humidity Stations	2	8
Stored memory capacity: 1 ISS @ 30 min. update	45 days	5 years
How is data viewed?	On PC using WeatherLink	On PC, using Envoy8X software or WeatherLink
Most frequent logging interval	1 minute	10 seconds
Works with WeatherLinkIP and WeatherLink for Mac	Yes	No
External databases supported	None	Access, MySQL, MS SQL Server
Can export data directly to Excel	No	Yes
Retransmits to another receiver	Yes	No
Works with 3rd-party sensors	No	Yes
Compatible with repeaters	Yes	Yes
Supports 0.1 mph (0.1 m/s) wind speed reading resolution	No	Yes***

* When used to extend Vantage Pro2 anemometer from the ISS. Otherwise, 0.

** Can use 2 only if one is leaf wetness and one is soil moisture.

***When using a Vantage Vue ISS. (Vantage Vue console does not support this resolution.)

Introducing Vantage Connect: Bringing Even the Most Remote Weather Stations “Within Range” with Cellular Updates.

Up until now, the only way to get data back from a very remote transmitting station was to install a Weather Envoy in a shelter near the station, then drive out to the station and download the data directly. With new Vantage Connect™, you can have your remote Vantage Vue or Vantage Pro2 data sent to any computer or smartphone in the world. Simply install the unit within range of your transmitting station. The data logger in Vantage Connect receives and stores the data, then automatically sends it via cellular connection to your secure page on www.weatherlink.com.

Vantage Connect

Vantage Connect can transmit any information that a Vantage Pro2, Vantage Vue or Weather Envoy can log. Vantage Connect will even send you an email or text message alarm when preset weather conditions occur. Set alarms for high wind, frost, flood, or any other condition—as many as you like. The alarm capability works in real time, sending an immediate alarm regardless of the update interval in your service plan.

The Vantage Connect package includes WeatherLink software and your own WeatherLink Network account (see page 21 for more information). View the data online on your computer or smartphone, or download the data to your PC for analysis, archiving, and reporting in WeatherLink (CD also included). Vantage Connect will allow you to view and store data from any station that is within cellular range. Mounting hardware included.

Radio compatible with Vantage Pro2 and Vantage Vue transmitters and repeaters. Solar powered with battery backup. Setup requires a PC. System requirements: a computer running Windows XP and above.

6620 Vantage Connect \$895  **AVAILABLE SUMMER 2012**

Vantage Connect Retrofit Kit

Allows you to turn your existing console into a Vantage Connect cellular modem. Just plug the console or Weather Envoy into the retrofit kit via serial cable included with WeatherLink. Includes AC power adapter. Requires WeatherLink for Windows, serial (6510SER).

6626 Vantage Connect Retrofit Kit \$450 **AVAILABLE SUMMER 2012**



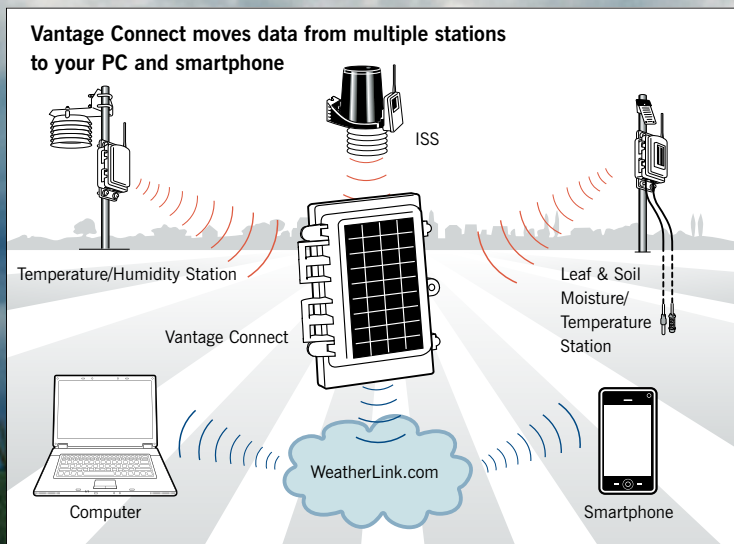
Annual Service Plan

Purchase of an annual service plan is required. Monthly subscriber fees depend on the frequency of your update interval.

CHOOSE YOUR PLAN (US ONLY)		
Update Interval	Prod. Number	Monthly Service Charge
5 minutes	6632	\$19.95
15 minutes	6634	\$14.95
60 minutes	6636	\$9.95

See www.weatherlink.com for product service plan information and availability for customers outside of the US.

This hardware requires a one-time activation fee of \$20.



INTEGRATED SENSOR SUITES

Vantage Vue Integrated Sensor Suite

Because Vantage Vue's transmitters are radio-compatible with Vantage Pro2, you can mix and match components. Can transmit to Vantage Vue, wireless Vantage Pro2 consoles, wireless Weather Envoy, Envoy8X and Vantage Connect. Mounting pole not included.

6357 Vantage Vue Integrated Sensor Suite \$225

Both Vantage Vue and Vantage Pro2 integrated sensor suite can be used with Weather Envoy, Envoy8X and Vantage Connect and WeatherLink (see page 20).



Vantage Pro2 Integrated Sensor Suite

Includes all the features of the Vantage Pro2 and Pro2 Plus integrated sensor suites shown on page 7. Can transmit to Vantage Vue and Vantage Pro2 consoles, Weather Envoy, Envoy8X and Vantage Connect. Mounting pole not included.

Wireless Integrated Sensor Suite

6322 with Standard Radiation Shield \$325
6323 with 24-Hour Fan-Aspirated Radiation Shield \$550

Cabled Integrated Sensor Suite*

6322C with Standard Radiation Shield \$275

Wireless Integrated Sensor Suite Plus with UV and Solar Radiation sensors

6327 with Standard Radiation Shield \$725
6328 with 24-Hour Fan-Aspirated Radiation Shield \$950

Cabled Integrated Sensor Suite Plus with UV and Solar Radiation sensors*

6327C with Standard Radiation Shield \$675



* Can only be used with a cabled Vantage Pro2 console/receiver



Add special-purpose stations or sensors.

Customize your Vantage Pro2 weather station, Weather Envoy or Envoy8X by adding special-purpose stations and sensors. Each can receive data from up to eight different transmitting stations.



Wireless Leaf & Soil Moisture/Temperature Station

Solar-powered station includes transmitter and backup battery inside weather-resistant shelter. To view the data for up to eight stations, add an Envoy8X and WeatherLink (see chart on page 11). Vantage Pro2 console/receiver or Weather Envoy and WeatherLink can only receive data from either:

- A single fully-populated station with two leaf wetness sensors, four soil moisture sensors, and four temperature probes,
- OR**
- Two partially-populated stations, one with two leaf wetness sensors and two temperature probes, and the other with four soil moisture sensors and four temperature probes.

Available in two models. Choose the model without sensors (6345), and add only those you need to meet your requirements. Or choose the Complete Soil Moisture/Temperature Station (6345CS), and add one or two leaf wetness sensors as desired. Compatible with the 6470 Stainless Steel Temperature Probe with Two-Wire Termination.

6345 Wireless Leaf & Soil Moisture/Temperature Station *without sensors* \$225



6345CS Complete Soil Moisture/Temperature Station *with 4 soil moisture sensors and 4 temperature probes* \$595



Wireless Temperature/Humidity Station

Battery-powered station includes temperature and humidity sensors inside protective radiation shield, and transmitter and lithium battery inside weather-resistant shelter. Expected battery life is six to nine months. To view the data, add a wireless Vantage Pro2 console/receiver, Weather Envoy or Envoy8X and WeatherLink. Includes hardware for mounting on fence post or pole. Mounting pole is not included.



6382 Wireless Temperature/Humidity Station \$250



Anemometer/Sensor Transmitter Kit

With Vantage Pro2, this solar-powered kit allows you to mount the anemometer in a different location than the integrated sensor suite—up to 1,000 ft. (300 m) from your wireless console/receiver. With Envoy8X, you can use this kit with any of our sensors including solar radiation, UV, temperature, anemometer, rain and third-party sensors that report in a range of 0–3 volts. For longer distances, add one or more wireless repeaters. Includes weather-resistant shelter for transmitter, solar panel, battery, and mounting hardware.



6332 Anemometer/Sensor Transmitter Kit \$195



Wireless Temperature Station

Battery-powered station includes stainless steel temperature probe with 25 ft. (7.6 m) cable, transmitter and battery inside weather-resistant shelter, and mounting hardware. To view the data, add a wireless Vantage Pro2 console/receiver, Weather Envoy or Envoy8X and WeatherLink. Expected battery life is six to nine months.



6372 Wireless Temperature Station \$195





1. Solar Radiation Sensor

To measure solar radiation and solar energy. Diffuser element and housing are carefully designed for accurate cosine response. Silicon photo diode provides good match to solar spectrum. Two-piece housing minimizes radiation heating, allows convection cooling of the sensor, and prevents the trapping of water or dust. To mount next to a rain collector, add our Sensor Mounting Shelf (not included).



6450 Solar Radiation Sensor \$160

Includes 2 ft. (0.6 m) cable. Use Standard 4-Conductor Extension Cable. Maximum cable length is 125 ft. (38 m) from sensor to integrated sensor suite.

2. UV Sensor

Measures the sunburning portion of the UV spectrum. Allows you to display UV index, dose rate, and daily and accumulated dose. Multi-layer filter provides a spectral response that closely matches the Erythema Action Spectrum. Diffuser provides excellent cosine response. Two-piece housing minimizes radiation heating, allows convection cooling of the sensor, and prevents the trapping of water or dust. To mount next to a rain collector, add our Sensor Mounting Shelf (not included).



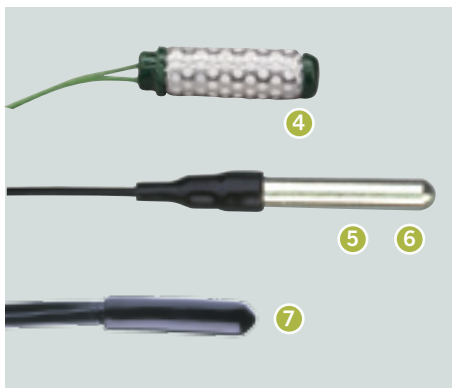
6490 UV Sensor \$350

Includes 2 ft. (0.6 m) cable. Uses Standard 4-Conductor Extension Cable. Maximum cable length is 125 ft. (38 m) from sensor to integrated sensor suite.

3. Sensor Mounting Shelf

For mounting solar radiation and/or UV sensors. Rigid shelf with anodized aluminum posts and stainless steel hardware attaches easily next to the rain collector on the outside of the Vantage Pro2 Integrated Sensor Suite.

6673 Sensor Mounting Shelf \$30



4. Soil Moisture Sensor

Watermark® soil moisture sensor uses electrical resistance to measure the moisture level of the soil. Does not require periodic maintenance during the growing season. Simply bury at the desired depth, then monitor moisture levels throughout the season. Add up to four sensors to a single Leaf & Soil Moisture/Temperature Station. Includes 15 ft. (4.6 m) cable.



6440 Soil Moisture Sensor \$55

5. Stainless Steel Temperature Probe with Two-Wire Termination

Multi-purpose temperature probe with 2½" (64 mm) long stainless steel housing. Use to measure temperature of air, soil, or water. Add up to four probes to a single Leaf & Soil Moisture/Temperature Station. Includes 15 ft. (4.6 m) direct-burial cable.

6470 Stainless Steel Temperature Probe with Two-Wire Termination \$50



6. Stainless Steel Temperature Probe with RJ Connector

Multi-purpose temperature probe with 2½" (64 mm) long stainless steel housing. Use to measure temperature of air, soil, or water. Use with Weather Envoy, Envoy8X, and Anemometer/Sensor Transmitter Kit. Includes 25 ft. (7.6 m) cable.

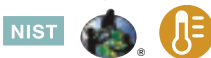
6475 Stainless Steel Temperature Probe with RJ Connector \$45



7. Temperature Probe with RJ Connector

Temperature probe with durable plastic housing. Use to measure temperature of air, soil, or water. Use with Weather Envoy, Envoy8X, and Anemometer/Sensor Transmitter Kit. Includes 25 ft. (7.6 m) cable.

6477 Temperature Probe with RJ Connector \$18



8. Anemometer

Includes both wind speed and wind direction sensors. Rugged components stand up to hurricane-force winds, yet are sensitive to the lightest breeze. Wind-tunnel tested to speeds in excess of 180 miles per hour. Sealed stainless steel ball bearings for long life. Comes complete with mounting hardware.



6410 Anemometer \$135

Includes 40' (12 m) cable. Use Standard 4-Conductor Extension Cable. Maximum cable length is 240' (73 m) from anemometer to sensor interface module. See page 17 for extension cable options.

9. Leaf Wetness Sensor

Use to monitor the level of surface moisture on foliage, with range from 0 (completely dry) to 15 (saturated). Add up to two sensors to a single Wireless Leaf & Soil Moisture/Temperature Station. Includes 40 ft. (12 m) cable.

6420 Leaf Wetness Sensor \$125



10. Rain Collector

Designed to meet the guidelines of the World Meteorological Organization, our self-emptying rain collector with tipping bucket is exceptionally accurate. Measures in 0.01" or 0.2 mm increments. Includes 40 ft. (12 m) cable.

7852 Rain Collector \$75

Uses standard 4-conductor extension cable. Maximum cable length is 900 ft. (270 m) from rain collector to console, including junction box cable. See page 17 for extension cable options.



11. Universal Anemometer Interface

Now you can use an R.M Young or NRG anemometer with your Davis system. This interface adapts certain third-party anemometers to report to a Vantage Pro2 Integrated Sensor Suite or Anemometer/Sensor Transmitter Kit. It has been tested with the R. M. Young anemometer model number 05103 and with the NRG anemometer, model 1900 NRG #40C. However, the interface is not limited to those products. Solar powered with lithium battery backup.

6336 Universal Anemometer Interface \$195



Extend the range of your wireless station—for miles on end!

For longer distances or to improve reception in troublesome areas, add one or more wireless repeaters. Use repeaters in a daisy chain, retransmitting from a single Vantage Pro2 or Vantage Vue Integrated Sensor Suite or special-purpose station. Or build a network of repeaters and wireless stations, with some repeaters listening to multiple stations, each with their own unique ID. For use with any Davis wireless transmitter and receiver.

Long-Range Wireless Repeaters

In our testing, we achieved an incredible four miles (6.4 km) of transmission distance using two of our long-range repeaters with Yagi antennas. We can't promise that you'll achieve quite the same results, since range is highly variable depending on antenna height, the terrain and foliage, buildings and other man-made structures, and RF interference. But we still think you'll be impressed! Ideal for agricultural or research applications where long distances are an issue. This solar-powered model includes solar panel and lithium backup battery. Antennas are sold separately.

7654 Long-Range Repeater, Solar-Powered \$300



Long-range repeater with one Yagi and one Omni antenna.

REPEATER DISTANCES				
Antenna Combination	Multiplier	Maximum Transmission Distance under optimal conditions **		
Dipole – Dipole *	1.00	1000 ft.	0.2 mile	300 m
Dipole – Omni	1.58	1580 ft.	0.3 mile	475 m
Dipole – Yagi	3.16	3160 ft.	0.6 mile	950 m
Omni – Omni	2.50	2500 ft.	0.5 mile	750 m
Omni – Yagi	5.00	5000 ft.	1.0 mile	1500 m
Yagi – Yagi	10.00	10,000 ft.	1.9 miles	3000 m

* Dipole antennas are found on all of our wireless weather stations and on our standard repeaters.

** Typical distance will be less. Outdoors, line of sight with minor obstructions or interference, typical distance is about 50–80% of the maximum. Through walls or in areas with high RF interference, typical distance may be as low as 20–40% of the maximum.



Antennas for Long-Range Repeaters

For use with our long-range repeaters. Each repeater requires two antennas: one to receive data, and another to retransmit it. Omni antennas transmit or receive in all directions. Yagi antennas transmit or receive from a single direction, but have a longer transmission distance. Mix and match to suit your needs, using the table above.

7656 Omni Antenna \$175

7660 Yagi Antenna \$150

Note: FCC regulations require that U.S. customers select from the antennas above; customers outside the U.S. must purchase third-party antennas in compliance with local regulations.



Standard Wireless Repeaters

Ideal for most applications. Uses the same dipole antenna found on all of our wireless stations. Range is up to 1,000 ft. (300 m) outdoors, line of sight. Typical range through walls under most conditions is 200 ft. to 400 ft. (60 to 120 m). AC-powered model includes power adapter. Solar-powered model includes solar panel and lithium backup battery.

7626 Standard Wireless Repeater, AC-Powered \$200

7627 Standard Wireless Repeater, Solar-Powered \$250



Installing your Vantage Vue or Vantage Pro2 console, Weather Envoy or Envoy8X outside? Add solar power and shelter.



1. Solar Power Kit for Wireless Consoles or Wireless Weather Envoy
Powers the wireless console/receiver or Weather Envoy. (Outdoor sensors are powered by the solar panel that is included with the station.) Includes 0.5-watt solar panel, regulator circuit, a 1.4-amp hour 6-volt rechargeable battery, and 20 ft. (6 m) cable.

6610 Solar Power Kit for Wireless Consoles or Weather Envoy \$225

2. Solar Power Kit for Cabled Consoles, Cabled Weather Envoy or Envoy8X
Powers both the console (or Cabled Weather Envoy) and the outdoor sensors. Includes 2.5-watt solar panel, regulator circuit, a 12-amp hour 6-volt rechargeable battery, 16 ft. (4.9 m) cable and hardware to attach to a vertical mounting pole. Use this Solar Power Kit to power the Envoy8X. Can also be used on wireless stations when more power is needed.

7707 Solar Power Kit for Cabled Vantage Pro2, Cabled Weather Envoy or Envoy8X \$450

3. Complete System Shelter
Protects console and other components located outside at a field or remote location. Weather-resistant NEMA 4X enclosure provides protection from the elements for the Vantage Pro2 console/receiver or the Vantage Vue console/receiver with or without WeatherLink. Measures 15½" × 7¾" × 13½" (395 × 195 × 345 mm).

7724 Complete System Shelter \$295

4. Multi-Purpose Shelter
Use to shelter the Weather Envoy or Envoy8X with WeatherLink data logger. Measures 3¾" × 9½" × 12½" (95 × 240 × 320 mm).

7728 Multi-Purpose Shelter \$95

5. Telephone Modem Adapter
For transmission of data from any of the serial port versions of our WeatherLink data loggers using a modem.

6533 Telephone Modem Adapter for WeatherLink for Vantage Vue, Vantage Pro2, and Weather Envoy. (Not for use with Envoy8X.) \$7

6. Rain Collector Heater
For use in cold climates to measure freezing rain or the moisture content of snowfall. Requires access to AC power; cannot be run using a solar power kit. Includes 24-watt, 24-volt heater with thermal cut-off switch, control unit, insulating reflective blanket, and AC-power adapter. (For Vantage Pro2 or Anemometer/Sensor Transmitter Kit as Rain Station only.)

7720 Rain Collector Heater \$195
Includes 50 ft. (15 m) cable.

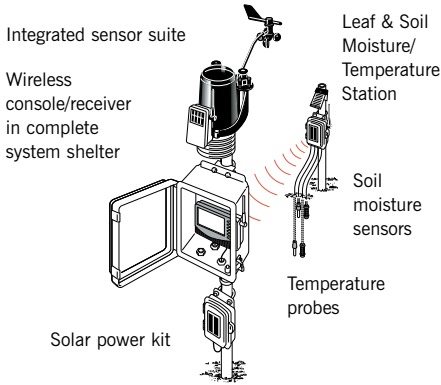
7. Radiation Shield
The most effective passive shelter available. Protects temperature sensor from solar radiation and other sources of radiated and reflected heat. Multi-plate construction for maximum airflow. Assembly required.

7714 Radiation Shield \$75
For Wireless Temperature Station or Leaf & Soil Moisture/Temperature Station and all temperature sensors.

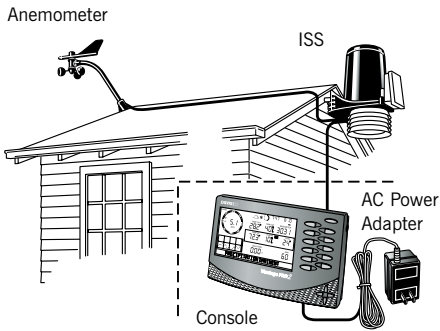
CURRENT DRAW & BATTERY LIFE*	Current Draw in milliamperes						Estimated Backup Battery Life in Days*				80-Amp Hour 6-Volt Battery Life at normal temperatures			
	lights off	lights on	with data logger			without data logger	with data logger			without data logger	with data logger			
			standard	streaming	WeatherLinkIP		standard	streaming	WeatherLinkIP		standard	streaming	WeatherLinkIP	
Vantage Vue Console/Receiver	1	160	1	3	101	9 months	9 months	3 months	2 days	9 years	9 years	3 years	30 days	
Vantage Pro2	Wireless	1	160	1	3	101	9 months	9 months	3 months	2 days	9 years	9 years	3 years	30 days
	Cabled	10	170	10	13	110	27 days	27 days	21 days	2 days	9 months	9 months	8 months	30 days
Weather Envoy	Wireless	1	N/A	1	3	101	N/A	4 months	1 month	<1 day	N/A	9 years	3 years	30 days
	Cabled	10	N/A	10	13	110	N/A	10 days	8 days	<1 day	N/A	6 months	6 months	30 days
Envoy8X	1 ID	N/A	N/A	1	N/A	N/A	N/A	4 months	N/A	N/A	N/A	9 years	N/A	N/A
	4 IDs	N/A	N/A	1.6	N/A	N/A	N/A	2 months	N/A	N/A	N/A	4 years	N/A	N/A
	8 IDs	N/A	N/A	2.5	N/A	N/A	N/A	1 month	N/A	N/A	N/A	2.7 years	N/A	N/A

* Information based on premium alkaline batteries. Actual battery life will vary depending on station setup and usage. N/A = not applicable.

FIELD STATION SHOWING SOLAR POWER KIT & SOIL MOISTURE SENSORS



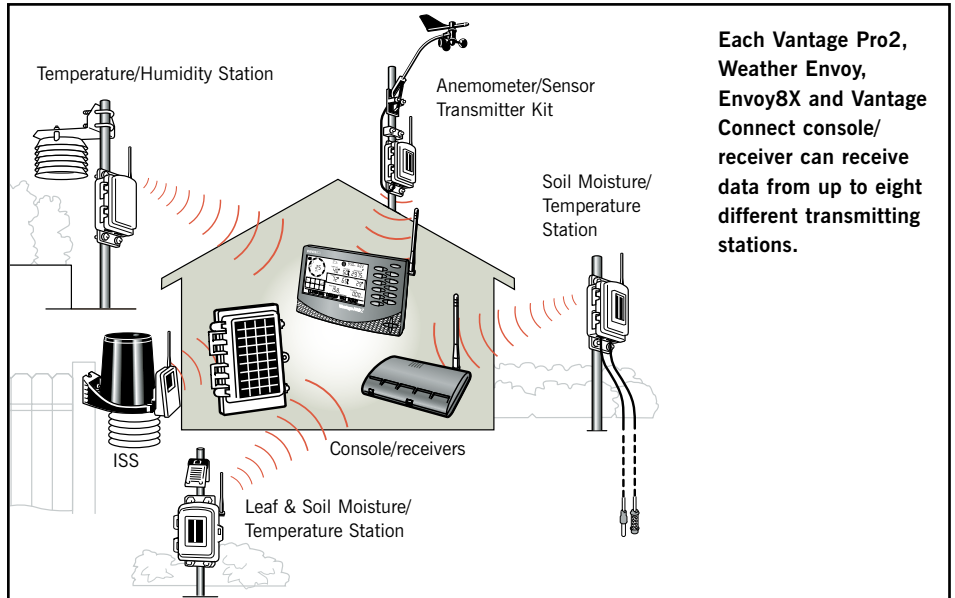
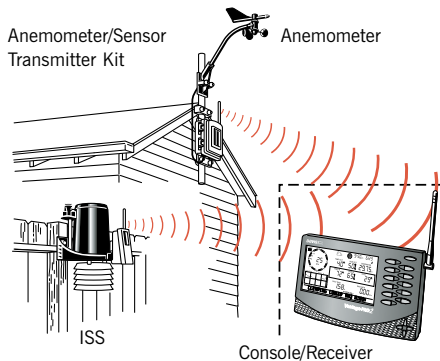
REMOTE ANEMOMETER



WIRELESS VANTAGE PRO2



ANEMOMETER/SENSOR TRANSMITTER KIT



Each Vantage Pro2, Weather Envoy, Envoy8X and Vantage Connect console/receiver can receive data from up to eight different transmitting stations.

MAXIMUM NUMBER OF EACH STATION TYPE (TOTAL # OF STATIONS CANNOT EXCEED 8)

Transmitting Station	Shown on Console		Logged by WeatherLink
	Vantage Pro2	Vantage Vue	
Integrated Sensor Suite	1	1	1
Anemometer/Sensor Transmitter Kit	1	0	1
Leaf & Soil Moisture/Temperature Station	2*	0	2*
Temperature Station	8	0	3**
Temperature/Humidity Station	8	0	2**

* One fully-populated station or two partially-populated stations.

** WeatherLink will log a maximum of A) 3 Temperature Stations or B) 2 Temperature Stations and 1 Temperature/Humidity Station or C) 1 Temperature Station and 2 Temperature/Humidity Stations.

EXTENSION CABLES

Increase the length of cables for the Davis products below by adding extension cables. Our Standard 4-Conductor Extension Cables include a coupler kit (protective shell; cable coupler; and 5 waterproof, silicone-filled, crimp-style splice connectors) for joining two cables together, indoors or out. Use the chart below to determine maximum cable lengths.	7876-008	8' (2.4 m)	\$10
	7876-040	40' (12 m)	\$18
	7876-100	100' (30 m)	\$40
	7876-200	200' (61 m)	\$70

Product	Cable Use	Included Cable Length	Maximum Cable Length
Wireless Vantage Pro2	Anemometer to Integrated Sensor Suite	40' (12 m)	240' (73 m)*
Cabled Vantage Pro2	Anemometer to Integrated Sensor Suite	40' (12 m)	240' (73 m)*
	Console to Integrated Sensor Suite	100' (30 m)	1000' (300 m)
WeatherLink for Vantage Pro2 and Vantage Vue (serial port versions)**	Data logger to serial port	8' (2.5 m)	48' (14.6 m)
Solar Radiation Sensor (6450)	Sensor to Integrated Sensor Suite	2' (0.6 m)	125' (38 m)
UV Sensor (6490)	Sensor to Integrated Sensor Suite	2' (0.6 m)	125' (38 m)
Stainless Steel Temperature Probe with RJ Connector (6475)	Probe to Wireless Temperature Station, Weather Envoy, Envoy8X, or Anemometer/Sensor Transmitter Kit	25' (7.6 m)	200' (61 m)
Temperature Probe with RJ Connector (6477)			
Leaf Wetness Sensor (6420)	Sensor to Wireless Leaf & Soil Moisture/Temperature Station	40' (12 m)	200' (61 m)
Anemometer (6410)	Sensor to Integrated Sensor Suite or Anemometer/Sensor Transmitter Kit	40' (12 m)	240' (73 m)*
Rain Collector (standalone, 7852)	Collector to Integrated Sensor Suite or Anemometer/Sensor Transmitter Kit	40' (12 m)	900' (270 m)

* **Anemometer Cables:** Maximum displayable wind speed decreases as the length of cable increases. At 140' (42 m) of cable, the maximum wind speed displayed is 135 mph (60 m/s). At 240' (73 m) of cable, the maximum wind speed displayed is 100 mph (45 m/s).

** **WeatherLink USB:** Extension cables may be purchased from a computer supplier.

To extend the cables on Temperature Probe (6470), Soil Moisture Sensor (6440), and Rain Collector Heater (7720), see instruction manuals.



Which sensors can you use with your transmitter?

See pages 11 and 17 for the maximum number of transmitters that can report to a single Vantage Pro2 console/receiver, Weather Envoy, or Envoy8X.

- Included
- Optional
- 4 Maximum sensors for that transmitter

		WIRELESS TRANSMITTERS															
		6250 Vantage Vue	6357 Vantage Vue ISS	6152 Vantage Pro2	6322 Vantage Pro2 ISS	6153 Vantage Pro2 with Fan-Aspirated Rad Shield	6323 Vantage Pro2 ISS with Fan-Aspirated Rad Shield	6162 Vantage Pro2 Plus	6327 Vantage Pro2 Plus ISS	6163 Vantage Pro2 Plus with Fan-Aspirated Rad Shield	6328 Vantage Pro2 Plus ISS with Fan-Aspirated Rad Shield	6345 Leaf Wetness & Soil Moisture/Temp Station w/o sensors	6345CS Complete Soil Moisture/Temp Station	6372 Temperature Station	6382 Temperature/Humidity Station	6332 Anemometer/Sensor Transmitter Kit	
Sensor Options and Accessories	Integrated Rain Collector	--	●	●	●	●	●	●	●	●	●						
	Rain Collector	7852															●
	Integrated Anemometer	--	●														
	Detachable Anemometer	6410		●	●	●	●	●	●	●	●						●
	Integrated Temperature/Humidity	--	●	●	●	●	●	●	●	●	●				●		
	Stainless Steel Temperature Probe with Two-Wire Termination	6470											4	4			
	Temperature Probe with RJ Connector*	6477															●
	Stainless Steel Temperature Probe with RJ Connector*	6475													●		●
	Passive Radiation Shield	7714	●	●					●				●	●	●	●	●
	Daytime Fan-Aspirated Radiation Shield	7747		●					●							●	
	24-Hour Fan-Aspirated Radiation Shield	--					●				●						
	Solar Radiation Sensor	6450					●		●		●						●
	UV Radiation Sensor	6490					●		●		●						●
	Sensor Mounting Shelf for UV/Solar	6673					●		●		●						
	Leaf Wetness Sensor	6420											2	2			
	Soil Moisture Sensor	6440											4	4			
	Third-Party Sensors (reporting 0-3 volt DC, Envoy8X required)	--			●	●	●	●	●	●	●	●	●	●			●
Universal Anemometer Interface	6336			●	●	●	●	●	●	●	●					●	

* Can also be used with Weather Envoy and Envoy8X to replace the internal temperature sensor.

Handheld wind speed indicators.

WindScribe™

Ultrasonic wind meter reads wind speed, 5-second average, and running average. Select from mph, km/h, fpm, m/s, f/s, or knots, plus temperature and wind chill in tenths of °F or °C. Sensitive to breezes as low as 0.4 mph (.64 km/h), and as high as 150 mph (241 km/h). Includes 3-volt lithium battery. 3.5 oz (100 grams).



276 WindScribe \$135

Wind Wizard™

Reads wind speed in mph, m/s, and Beaufort. Readout dial is supported on sapphire jewel bearings and steadied by a rare-earth magnetic dampening system. Includes vinyl case and wrist lanyard. Folding handle quickly and securely latches into place. No batteries needed. 2.5 oz (71 g).



281 Wind Wizard \$53.99

Turbo Meter™

Reads wind speed in mph, knots, fpm, or m/s. Turbine suspended on sapphire jewel bearings responds to the lightest of winds. Three-digit display offers excellent viewing contrast both in bright sunlight and at night. Requires three AAA alkaline batteries (not included). 3 oz (85 g) not including batteries.



271 Turbo Meter \$165





Which transmitters can you use with your receiver?

See pages 11 and 17 for the maximum number of transmitters that can report to a single Vantage Pro2 console/receiver, Weather Envoy, or Envoy8X.

Included

 Optional

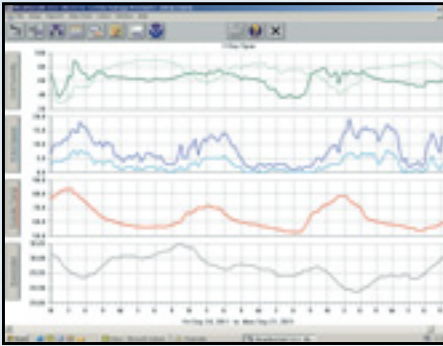
 Included but additional can be added

		SYSTEMS & RECEIVERS												
		WIRELESS								CABLED				
		6250 Vantage Vue	6152 Vantage Pro2	6153 Vantage Pro2 with Fan-Aspirated Rad Shield	6162 Vantage Pro2 Plus	6163 Vantage Pro2 Plus with Fan-Aspirated Rad Shield	6316 Wireless Weather Envoy	6318 Envoy8X	6620 Vantage Connect	6351 Vantage Vue Console only	6312 Vantage Pro2 Console only	6152C Vantage Pro2	6162C Vantage Pro2 Plus	6316C Cabled Weather Envoy
Wireless Options	Vantage Vue Console/Receiver	6351	●	●	●	●	●	●	●	●	●			
	Vantage Vue ISS	6357	●					●	●	●	●			
	Wireless Vantage Pro2 Console/Receiver	6312	●	●	●	●	●			●	●			
	Wireless Vantage Pro2 ISS	6322		●				●	●	●	●			
	Wireless Vantage Pro2 ISS with 24-Hr Rad Shield	6323			●			●	●	●	●			
	Wireless Vantage Pro2 ISS with UV-Solar	6327				●		●	●	●	●			
	Wireless Vantage Pro2 ISS with 24-Hr Rad Shield & UV Solar	6328					●		●	●	●			
	Wireless Weather Envoy	6316	●	●	●	●	●	●		●	●			
	Wireless Leaf & Soil Moisture/Temp Stations	6345		●	●	●	●	●	●		●			
	Complete Soil Moisture/Temperature Station	6345CS		●	●	●	●	●	●		●			
	Wireless Temperature Station	6372		●	●	●	●	●	●		●			
	Wireless Temperature/Humidity Station	6382		●	●	●	●	●	●		●			
	Anemometer/Sensor Transmitter Kit	6332		●*	●*	●*	●*	●*	●	●	●			
	Standard Wireless Repeater, AC-Powered	7626	●	●	●	●	●	●	●	●	●			
	Standard Wireless Repeater, Solar-powered	7627	●	●	●	●	●	●	●	●	●			
	Long-Range Wireless Repeater, Solar-Powered	7654	●	●	●	●	●	●	●	●	●			
Solar Power Kit for Wireless (includes 1.4-amp hour 6-volt battery)	6610	●	●	●	●	●	●		●	●				
Cabled Options	Cabled Weather Envoy	6316C											●	
	Cabled Vantage Pro2 ISS	6322C									●		●	
	Cabled Vantage Pro2 ISS with UV & Solar	6327C										●	●	
	Solar Power Kit for Cabled (includes 12-amp hour 6-volt battery) **	7707	●	●	●	●	●	●	●	●	●	●	●	●
Installation Options	Rain Collector Heater	7720		●	●	●	●					●	●	
	Mounting Tripod	7716	●	●	●	●	●		●			●	●	
	Mounting Pole Kit	7717	●	●	●	●	●		●			●	●	
	Complete System Shelter	7724	●	●	●	●	●	●		●	●	●	●	●
	Multi-Purpose Shelter	7728						●	●					●
	Daytime Fan-Aspirated Radiation Shield	7747		●		●						●	●	
	Sensor Mounting Shelf	6673		●	●	●	●					●		

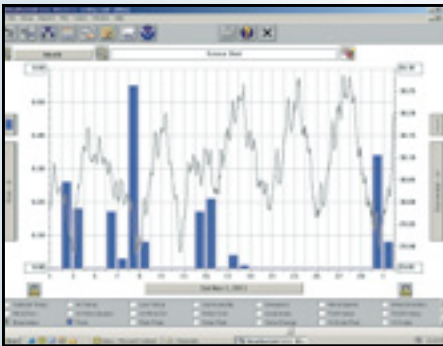
* Only when used as a separate transmitter for your station's anemometer
 ** Can also be used on wireless stations when more power is needed

Your weather data, your computer. What could be better?

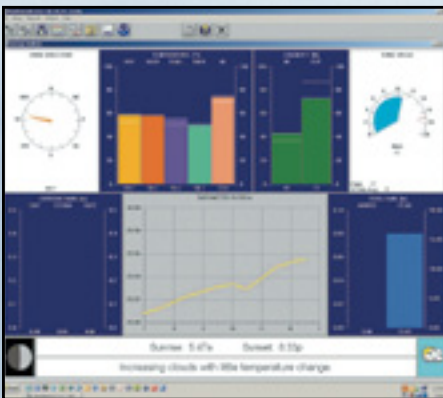
For the ultimate in weather monitoring, add WeatherLink software and data logger to any of our weather stations. The data logger fits neatly into your Vantage Pro2 or Vantage Vue console; or Weather Envoy or Envoy8X to collect and store your weather data. Connect the data logger to your computer to download the data to the software for detailed analysis and graphing. Choose our popular WeatherLinkIP model to automatically upload to the WeatherLink Network or see the chart on page 23 to determine which of our 8 models is best for you.



Graph data on a daily, weekly, or yearly basis.



View multiple weather variables at the same time to see their relationships.



Check current conditions at a glance on the instant weather bulletin.

Expanded Reporting

- **More Weather Data.** View weather information not available on the console, including heating/cooling degree days, and fuel-oil demand.
- **Optional Sensor Reporting.** With optional UV and solar radiation sensors, get details on sunburn risk and solar energy.

Sharing Your Weather Data

- **Create Your Own Reports.** Data can be exported to most popular spreadsheets, databases, and word processing programs.
- **Weather Website.** Create a weather website or post weather conditions to a LAN. Add graphs, text lines, or scrolling ticker-tapes, and upload other files (such as webcam images) along with weather data.
- **Citizen Weather Observer Program.** Submit your data to the National Weather Service to help develop improved weather prediction models. www.wxqa.com
- **The GLOBE Program.** Participate with other elementary through high schools in an international weather-related program. www.globe.gov

Data Storage & Transfer

- **User-Selectable Storage Interval.** Choose 1, 5, 10, 15, 30, 60, or 120 minutes. Store up to six months' worth of data depending on the storage interval.
- **WeatherLink Models with Standard Data Logger.** Log and store data, even when the data logger is not connected to your PC. Transfer the data as often as you like, or leave the software running to transfer it automatically each day.
- **Internet Protocol (IP) Model.** Upload your weather data to the Internet within minutes. No web skills required—WeatherLinkIP does all the work for you!

- **Alarm Output & Irrigation Control Models.** Both include our standard data logger plus a connector block that allows you to connect to your irrigation system, or to a heater, fan, or other device.
- **Streaming Data Logger Models.** Provide a continuous stream of data to a PC or to a ham radio with a TNC modem.

WeatherLink with Standard Data Logger

Our most popular models, for everyone from the home weather buff to the most demanding scientific user. Available in versions for both PC and Mac. (Mac versions do not include all features; see the "Notes" in the chart on page 23.) All models include data logger, download cable, software on CD, *Getting Started Guide*, and on-line help. (Envoy8X is compatible only with the 6510USB and 6510SER.)

WeatherLink for Vantage Pro2 and Vantage Vue
 6510USB Windows USB Version \$165
 6510SER Windows Serial Version \$165
 6520 Mac® OS X Version \$165



WeatherLink USB data logger installed in Vantage Pro2 Console.

Data logger fits neatly into all Vantage Pro2, Vantage Vue, and Envoy models. (Appearance varies depending on model.)



Easily view your weather data on the web.

WeatherLink.com is Davis' global weather network with thousands of weather stations reporting. Each reporting station has its own page on the site, and is shown on the map as a temperature-color-coded dot that makes it easy to see temperatures worldwide. Click on a dot to see current weather conditions for that station. Each WeatherLink.com account also includes a private page with enough storage capacity to store up to two years' worth of weather data.



WeatherLinkIP data logger installed in Vantage Vue Console.

Adding your station to the WeatherLink Network is as simple as "plug-and-play"—no web skills needed! Simple configuration steps are required to upload to third-party sites or set e-mail alert conditions.

On WeatherLink.com you can:

- Automatically upload data to third-party weather sites including CWOP (Citizen Weather Observer Program), Weather Underground, the GLOBE Program and more.
- Get e-mail alerts of current weather conditions or simple alarm conditions.
- Download the data to your PC for all the same powerful charting, graphing and analysis of WeatherLink software. Extra User License Kits allow you to download the data independently to multiple PCs—ideal for schools, agriculture, scientific fieldwork, and remote locations.
- Store four times the data that can be stored on your data logger alone.
- View your data on the WeatherLink.com map or your iPhone® or Android™ app.
- Allow others to view your current weather data, or flag your page as private.

Free Mobile Apps

See your WeatherLink Network station's data on your smartphone. Scan the applicable QR code below or search for WeatherLink on iTunes® or the Android Market.



6556 WeatherLink iPhone App



6557 WeatherLink Android App
AVAILABLE SPRING 2012

Below are three ways to join the WeatherLink Network:

WeatherLinkIP

You can post your weather data directly to WeatherLink.com without a PC using WeatherLinkIP. Simply plug the data logger into the back of your Vantage Pro2 or Vantage Vue console, or Weather Envoy and connect the cable to your cable/DSL/wireless broadband router. Within minutes, you'll be able to see your weather data live on the Internet. WeatherLinkIP uploads your data automatically even when your PC is not running—in fact, a PC is not even required to upload data! **Not compatible with Envoy8X. A router or hub and Internet service is required. No annual subscription required.**

6555 WeatherLinkIP \$295



COMING SOON!

Vantage Connect and Vantage Connect Retrofit Kit

A WeatherLink Network account is included with the purchase of the Vantage Connect (6620) or the Vantage Connect Retrofit Kit (6626). For more details, see page 12.

COMING SOON!

WeatherLink Network Annual Subscription

for WeatherLink Serial and USB
Makes any Davis weather station (including classic Vantage Pro, Monitor, Wizard, and Perception stations) into a WeatherLink.com station. With the annual subscription, your weather data is automatically uploaded to WeatherLink.com as long as your computer is on, and the software is running. **Not compatible with Envoy8X. Requires a PC, WeatherLink v6.0 (upgrade for free on www.davisnet.com/support/weather/downloads) and Internet service. Not required for WeatherLinkIP (6555), Vantage Connect (6620) or Vantage Connect Retrofit Kit (6626).**

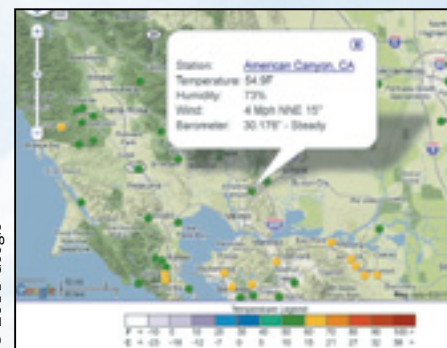
6558 WeatherLink Network Annual Subscription \$30/year AVAILABLE SPRING 2012



See it now at www.WeatherLink.com

WeatherLink® Network			
American Canyon, CA			
Current Conditions as of 11:05 PM Monday, November 02, 2010			
Station Summary	Current	Today's High	Today's Low
Outside Temp	54.9 F	55.8 F	41.5 F
Outside Humidity	72%	87%	73%
Inside Temp	72.2 F	73.8 F	65.0 F
Inside Humidity	32%	34%	30%
Frost Index	50.0 F	50.0 F	11:24 AM
Wind Chill	50.0 F	50.0 F	38.0 F
Dew Point	46.0 F	46.0 F	10:06 AM
Barometer	30.179"	30.204"	10:40 AM
Bar Trend	Steady		
Wind Speed	4 mph	8 mph	2:14 AM
Wind Direction	NNE 15°		
Solar Radiation	645 W/m²	780 W/m²	11:22 AM
UV Radiation	2.8 Index	2.8 Index	11:08 AM
24 Hour Forecast	Partly Cloudy		

See your weather data on your private page from any Internet-connected computer.



© 2011 Google

Click on stations worldwide to see a summary of current conditions.

WeatherLink® Network		
American Canyon, CA		
55°	HIGH 55°F	at 11:57 AM
	LOW 40°F	at 5:11 AM
Wind	NNE 4 mph	High Gust 8 mph at 2:14 AM
Humidity	72%	Frost Line 60°F
Rain	0.00"	Snowfall Total 3.47"
Barometer	30.18"	Steady

See detailed current weather data for your station, or any of the thousands worldwide.

Integrated Pest Management Module

The new Integrated Pest Management Module (IPM) provides the final step in linking your weather data to actual pest risk, giving you a powerful new tool in the battle against crop pest damage. This add-on module works with WeatherLink for Windows and Vantage Pro2 to gather real-time temperature, humidity, rain and leaf wetness data and generate stepped risk levels to warn you when conditions are favorable for pest development. The software comes loaded with pest models for all known pests, including diseases, insects and mites. (You may delete pests not present in your area.) You will see at a glance when conditions are favorable for insect pests reaching a damaging stage of growth, or for disease development to occur. A color-coded spreadsheet puts the highest risk potential pests at the top of the list and highlights them in red. Because you configure the software to reflect pests present in your area and use real-time data from your own vineyard and orchard weather sensors, the software's updated pest development algorithms will provide you with the most accurate, crop-specific risk assessment available.

6571 Integrated Pest Management Module for Grapes \$495

6572 Integrated Pest Management Module for Apples & Pears \$495



REQUIRES:

Vantage Pro2 or Vantage Pro2 Plus and WeatherLink for Windows (any model), version 5.6 or later. Windows XP SP3 and above. Compatible with Weather Envoy and Envoy8X.

All disease models also require a Leaf Wetness Sensor with a Wireless Leaf & Soil Moisture/Temperature Station.

IPM for Grapes

DISEASES PREDICTED

- Anthracnose
- Black Rot
- Botrytis Bunch Rot
- Downy Mildew
- Phomopsis Cane & Leaf Spot
- Powdery Mildew

PLUS 21 INSECTS & MITES PREDICTED, INCLUDING:

- European Grapevine Moth
- Grape Berry Moth
- Grape Phylloxera
- Vine Mealybug
- Grape Scale

IPM for Apples & Pears

DISEASES PREDICTED & MODELS EMPLOYED

- 4 Apple Scab Models (Ascospore Maturity, Modified Mills Table & Revised Mills Table, A-Scab)
- 3 Fire Blight Models (CougarBlight, Maryblyt™, Billings Integrated System)
- 2 Sooty Blotch & Flyspeck Models (Brown & Sutton, Cool Climate)
- Powdery Mildew of Apple
- Brown Spot of Pear
- Cedar Apple Rust
- Black Rot of Apple (Leaf & Fruit)
- Phenology Model of Apple Tree

PLUS 22 INSECTS & MITES PREDICTED, INCLUDING:

- Apple Maggot
- Codling Moth
- Light Brown Apple Moth
- Mediterranean Fruit Fly
- San Jose Scale

1 PEST RISK ASSESSMENT SUMMARY
Color coded to identify which pests currently pose a danger to grapes and sorted by severity level.

2 DATA PANE
Displays a table of history for a particular pest or a graph of this information captured from the last six weeks.

3 PEST DESCRIPTION PANE
Learn more about the pests that can potentially damage your crop.

4 PEST IMAGE
Provides a picture of the pest to help you easily identify it when you are in the field.

Agricultural/Turf Management Software Module

Optional software module adds specialized reports for farmers, growers, and turf managers, with user-defined growing season and 24-hour period. You'll get evapotranspiration, chilling requirement, leaf wetness hours, and soil temperature hours. Plus growing degree-days and temperature-humidity hours and crop water management (with irrigation values and user-entered K-factor profiles).

For use with all WeatherLink models except Mac versions. Some reports require the use of optional sensors. Evapotranspiration reports require the use of solar radiation sensor.

6511 Agricultural/Turf Management Module \$95



E-Mail/Phone Alert Software Module

Be alerted whenever conditions approach critical—24 hours a day, 7 days a week. Choose e-mail for detailed information on alarm conditions plus regularly scheduled updates on current weather conditions. Use the alert

to send a text to your cell phone. Or choose the phone alert, with a special alarm tone telling you to check your weather station console or WeatherLink for details.

For use with all WeatherLink models except Mac versions. Because systems vary, the phone alert may not work outside the USA.

6512 E-Mail/Phone Alert Module \$35



Note: Add-on software modules (6571, 6572, 6511, 6512) must be used with WeatherLink. All models work with Vantage Pro2. For other stations, refer to chart on page 23.

Critical real-time data right when you need it.

WEATHERLINK WITH CONNECTOR BLOCKS

WeatherLink for Alarm Output with Connector Block

Now you can automatically turn heaters, fans, and other devices on or off using your weather station. For each of four outputs, you can enter up to eight different weather parameters. Enter threshold values for each, select from nine different test conditions, and link the entries together as you choose. For example, you could activate a fan to cool your house—but only if the difference between the inside and outside temperatures is more than 5°F, it's more than 72°F inside, and it's between 5:00 p.m. and 6:00 a.m. Our connector block provides the interface between your weather station and an electrical device. For high-power devices, you may also need to add electrical relays (not supplied by Davis). Connection to a PC is not required except for initial setup.

6544 WeatherLink for Alarm Output \$295



WeatherLink for Irrigation Control with Connector Block

Use your weather station to turn your irrigation system on or off automatically. Connector block connects directly to most irrigation systems including Rain Bird®, Rain Master®, and Toro®. For industrial controllers, provides electronic pulses for wind, rain, and ET. For homeowners, looks at rain and ET values to determine when to inhibit watering. Can also set console alarms to inhibit watering when temperatures are too low or winds are too high. ET monitoring requires solar radiation sensor. Connection to a PC is not required except for initial setup.



6560 WeatherLink for Irrigation Control \$295



WEATHERLINK STREAMING DATA LOGGERS

WeatherLink for Emergency Response Teams with Streaming Data Logger and CAMEO link

For use with the free CAMEO® (Computer-Aided Management of Emergency Operations) software developed by NOAA and the EPA. With Vantage Pro2, Vantage Vue, or Weather Envoy, provides the real-time weather data needed to map the footprint of a hazardous plume, predict its dispersion, and help make critical public safety decisions—all at just a fraction of the cost of other systems. For more about CAMEO, visit www.epa.gov/emergencies/content/cameo/index.htm.

6550 WeatherLink for Emergency Response Teams \$295



WeatherLink for APRS with Streaming Data Logger

For ham radio operators, including storm chasers and volunteer weather watchers. Connects a Vantage Pro2 console, Vantage Vue console, or Weather Envoy to a ham radio with TNC modem for instant transmission of both your location and the local weather conditions via APRS. Connection to a PC is not required except for initial setup.

6540 WeatherLink for APRS \$195



Choose the WeatherLink model that suits your needs.

To get the most out of WeatherLink, choose the model that's right for you. All share the powerful weather data logging and reporting features discussed on page 20, while some add special features designed for specific user groups.

Extra User License Kit includes software on CD and extra user license.

SYSTEM REQUIREMENTS	MODEL	PRICE	FOR USE WITH	DESIGNED FOR	NOTES	EXTRA USER LICENSE KIT	
Windows, USB Windows XP and above	6510USB	\$165	Vantage Pro2, Vantage Vue, Weather Envoy or Envoy8X	General Purpose	For PCs with USB connections	6510X	\$25
Windows, Serial Windows XP and above	6510SER	\$165	Vantage Pro2, Vantage Vue, Weather Envoy or Envoy8X	General Purpose	For PCs with serial port connections.	6510X	\$25
All models with streaming data loggers or connector blocks include all our normal WeatherLink features, plus additional features designed for special purposes. To download one of these models via USB, add our # 8434 USB-to-Serial Cable \$20	6540	\$195	Vantage Pro2, Vantage Vue, or Weather Envoy	APRS (Ham Radio)	Connects to a ham radio with TNC modem for instant streaming transmission of both your location and the local weather conditions via APRS (Automatic Position Reporting System).	6510X	\$25
	6544	\$295	Vantage Pro2, Vantage Vue, or Weather Envoy	Alarm Output	Use to turn heaters, fans, or other devices on or off depending on weather conditions. (For high-power devices, you may also need to add electrical relays.) Includes connector block.	6510X	\$25
	6550	\$295	Vantage Pro2, Vantage Vue, or Weather Envoy	Emergency Response	For use with the free CAMEO® software developed by NOAA and the EPA (not included). Provides streaming weather data to map a hazardous plume and predict its dispersion.	6510X	\$25
	6560	\$295	Vantage Pro2, Vantage Vue, or Weather Envoy	Irrigation Control	Connects to Rain Bird®, Rain Master®, Toro®, and others. Provides electronic pulses for wind, rain, and ET, or uses the alarm settings in the console. Includes connector block.	6510X	\$25
Internet DSL or cable connection and router with free ethernet port. Windows XP and above	6555	\$295	Vantage Pro2, Vantage Vue, or Weather Envoy	Internet Updates	View downloaded data on your own weather website and be part of the WeatherLinkIP community.	6510X	\$25
Mac Mac OS X v 10.1 or above, Intel Mac Compatible	6520	\$165	Vantage Pro2, Vantage Vue, or Weather Envoy	General Purpose	Does not log data from leaf wetness, soil moisture, solar radiation, or UV sensors. Does not include Citizen Weather Observer or GLOBE capabilities. May not be used with E-Mail/Phone Alert or Agricultural/Turf Management Modules.	6520X	\$25

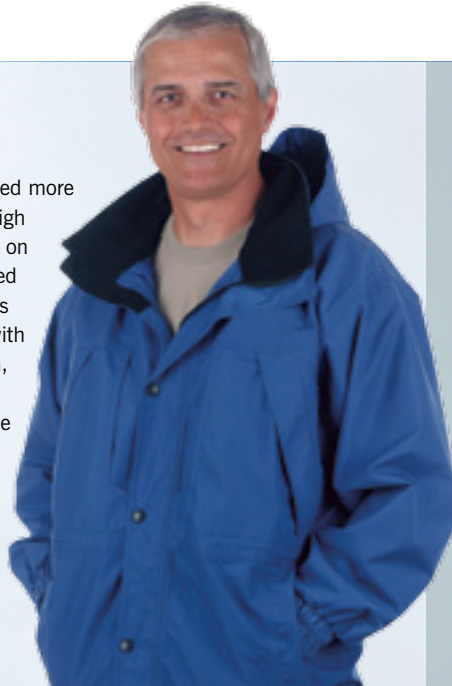
How Will You Use Your Weather Station?


Davis weather stations are used around the world to keep weather observers informed. While real user stories are highlighted in our Davis E-Newsletter, we've created a few "typical" customers to give you an idea of the many ways you can create the perfect weather system.

The Weather Buff

He loves to watch the weather, and over the years has installed more than one drugstore thermometer on his patio. He wanted a high quality weather station that could give him accurate readings on wind, temperature, humidity, barometer, and rain, all displayed clearly on a console—while staying within his budget. He was impressed with how simple Vantage Vue was to install and with all the information it provided on the console—historical data, forecast icons, and graphs—and the Weather Center's extra information. He added WeatherLinkIP and learned how simple it was to upload his data to the Internet.

- Affordable
- Easy to install
- Add WeatherLinkIP for simple online sharing




THE BUFF'S SYSTEM 	
Vantage Vue, 6250	
Mounting Pole Kit, 7717	
WeatherLinkIP, 6555	
ON HIS WISH LIST	
Additional console for the garage, 6351	
PRICE AS SHOWN: \$725	

The Professional Weather Watcher

He is serious about the weather. He wanted weather readings that could be reported to NOAA and CWOP. He liked the Vantage Vue, but chose the Vantage Pro2 system so that he could mount the anemometer on a 30' tower while keeping his rain and other sensors at 6'. He knew a Davis weather station would be durable—a very important fact because he lives where summers are hot, winters are snowy, and the hurricane-force winds are a late summer highlight. He chose the Vantage Pro2 with 24-hour Fan-Aspirated Radiation Shield and added a Rain Collector Heater. Living where weather can do some serious damage, he wanted to help his community prepare for severe weather via his website and his ham radio, so he added WeatherLinkIP. He wanted to see his data in the living room as well as in his radio shack, so he added a Vantage Vue console. He also wanted to monitor the temperature of the pond that is 1500 feet from his back deck, so his latest addition to his system was a wireless Temperature/Humidity Station and a standard wireless repeater.

- Separable sensors for greatest wind accuracy and professional siting
- Ability to add special purpose stations
- UV and Solar sensors available
- Can download data from WeatherLinkIP for NOAA and CWOP reporting




THE PRO'S SYSTEM 	
Vantage Pro2 with 24-Hour Fan-Aspirated Shield, 6153	
Mounting Tripod, 7716	
Mounting Pole Kit, 7717	
WeatherLinkIP, 6555	
Rain collector heater, 7720	
Wireless Temperature Station, 6372	
Standard Wireless Repeater, solar powered, 7627	
Vantage Vue console, 6351	
ON HIS WISH LIST	
Solar and UV Radiation Sensors with shelf, 6450, 6490, & 6673	
PRICE AS SHOWN: \$1,980	

The Vintners

They found the perfect vineyard on a rolling hillside and sank their savings into the dream of raising grapes and producing award-winning wines. Even though their climate, with its foggy, cool summers, mild winters and infrequent frosts, is ideal, they still have to make the daily weather-based decisions that determine the success—or failure—of their crop. They needed real-time data from their own vineyard's micro-climate, which happens to be miles from their office; miles from anything in fact! They chose a Vantage Pro2 Plus system and installed new Vantage Connect to bring that remote station's data right into their office via a cellular connection. They use WeatherLink software to log and store data to use in future growing seasons. They added a Wireless Leaf & Soil Moisture Temperature Station to aid in irrigation decisions and the Integrated Pest Management Module for Grapes to manage pests before damage occurs. They dream of expanding their vineyard and adding weather stations in remote fields. They need the durability, accuracy, and update speed of Davis stations; and the flexibility to grow and add on to their system offered by the Vantage Pro2.

- Full agricultural functionality
- Real-time data communicated via cellular connection from a remote station
- UV and solar sensors provide ET data for use in irrigation
- Integrated Pest Management Module includes ALL grape pests
- WeatherLink data archives enhance this and future growing seasons




THE VINTNER'S SYSTEM	
Vantage Pro2 Plus with 24-Hour Fan Aspirated Radiation Shield, 6163	
Mounting tripod, 7716	
Vantage Connect, 6620	
Wireless Leaf & Soil Moisture Temperature Station, 6345	
2 Leaf Wetness Sensors, 6420	
4 Soil Moisture Sensors, 6440	
2 Stainless Steel Temperature Probes with Two-Wire Termination, 6470	
Integrated Pest Management Module for Grapes, 6571	
Vantage Connect service plan with 15-minute update interval, 6634	
ON THEIR WISH LIST	
A really good growing season	
PRICE AS SHOWN: \$3,455	
ANNUAL SERVICE PLAN: \$179.40	

The Wind Researcher

She's a researcher overseeing graduate students who are studying wind energy. Her team needed wind data from several sites to see how wind moves through the campus. She started with the Vantage Pro2 on the roof of the biology building, and then added two Vantage Vue integrated sensor suites about 800 feet apart, along with a long-range repeater. Her colleagues were interested in not only the wind data, but the temperature and humidity data as well. When her team decided three anemometers were not quite enough, they asked for more. But with three different consoles reporting the data, it was already a time-consuming process to compile the data into one useful database. Enter our new Envoy8X, which allowed her to install five more Davis anemometers with Anemometer/Sensor Transmitter Kits. Using long-range repeaters, all eight stations are logged by one Envoy8X. One database with data from all the anemometers plus the additional sensor data from the three integrated sensor suites is just what her team needed.

- Can log 8 stations, including multiple anemometers and integrated sensor suites
- Flexibility to handle radio transmission obstacles
- Envoy8X software with commercial grade database capabilities
- Ability to use third-party sensors
- Additional Envoy8Xs can be added



THE RESEARCHER'S SYSTEM	
Vantage Pro2 Plus with 24-Hour Fan Aspirated Radiation Shield, 6163	
2 Vantage Vues, 6250	
3 Mounting Tripods, 7716	
5 Anemometer/Sensor Transmitting Kits, 6332	
5 Anemometers, 6410	
5 Mounting Pole Kits, 7717	
Envoy8X, 6318	
2 Long-Range Repeaters, Solar-Powered, 7654	
2 Omni Antennas, 7656	
2 Yagi Antennas, 7660	
2 Mounting Pole Kits, 7717	
WeatherLink, 6510USB	
ON HER WISH LIST	
Another Envoy8X for more anemometers	
PRICE AS SHOWN: \$5,815	

Vantage Console Features

- Vantage Pro2 and Vantage Vue
- Vantage Pro2 only
- Vantage Vue only

	BAR	HUMIDITY			RAIN			TEMPERATURE				WIND			WITH OPTIONAL SENSORS								
	Barometric Pressure	Inside Humidity	Outside Humidity	Dew Point	Rainfall Amount	Rain Storm Amount	Rain Rate	Inside Temperature	Outside Temperature	Heat Index	Wind Chill	Wind Speed	Wind Direction	Direction of High Speed	Evapotranspiration	Humidity (Extra)	Leaf Wetness	Soil Moisture	Solar Radiation	Temperature (Extra)	Temp-Hum-Sun-Wind	UV Radiation	UV MEDS
Update Interval *	1 min	1 min	50 sec	10 sec	20 sec	20 sec	20 sec	1 min	10 sec	10 sec	10 sec	2 1/2 sec	2 1/2 sec	2 1/2 sec	1 hour	50 sec	1 min	80 sec	50 sec	10 sec	10 sec	50 sec	50 sec
CONSOLE DISPLAYS																							
Reading at end of update interval	●	●	●	●				●	●	●	●	●	●			●	●	●	●	●	●	●	●
Total amount for the interval					●	●									●								●
Average reading for the interval												●											
High reading for the interval							●																
SET ALARMS FOR																							
Special Alarms	1				2	3						4			5								6
High Reading		●	●	●			●	●	●	●	●	●			●	●	●	●	●	●	●	●	●
Low Reading		●	●	●				●	●		●				●	●	●		●				
DISPLAYED BUT NOT GRAPHED																							
Current Year High	●	●	●	●				●		●		●			●	●	●	●	●				
Current Year Low	●	●	●	●				●			●				●	●	●	●	●				
GRAPHED & DISPLAYED FOR LAST 24 OF EACH OF THE FOLLOWING (25 FOR VANTAGE VUE)																							
EOP	End-of-15-Minute Period Readings	●																					
	End-of-Hour Period Readings	●	●	●	●			●	●	●						●	●				●		
TOTALS	15-minute Period Totals				●																		
	Hourly Totals				●										●								●
	Daily Totals				●										●								●
	Monthly Totals				●										●								
	Storm Totals (with start & end date)					●																	
	Yearly Totals				●										●								
AVERAGES	10-Minute Averages (2 min. for VV)											●											
	Hourly Averages or Dominant											●	●					●				●	
	Daily Averages or Dominant											●	●										
	Monthly Averages or Dominant											●	●										
	Yearly Averages											●			●								
HIGHS	One-Minute Highs							●															
	Hourly Highs							●				●											
	Daily Highs	●	●	●	●			●	●	●	●	●					●	●	●		●	●	
	Monthly Highs	●	●	●	●			●	●	●	●	●					●	●	●		●	●	
	Yearly Highs							●				●											
LOWS	Hourly Lows										●												
	Daily Lows	●	●	●	●			●	●	●	●						●	●					
	Monthly Lows	●	●	●	●			●	●	●	●						●						
	Yearly Low										●												

*Update interval may vary depending on station ID and type of station.

SPECIAL ALARMS

- 1 **Storm Warning:** Amount of barometric pressure fall.
- 2 **Storm Clearing:** Amount of barometric pressure rise.
- 3 **Flash Flood Warning:** 15-minute rainfall amount.
- 4 **24-hour Rain Alarm:** 24-hour rainfall amount.
- 5 **Rainstorm Alarm:** Rainfall amount for current storm.
- 6 **High Wind Speed and 10-Minute Average Wind Speed Alarms**
- 7 **Daily Evapotranspiration Amount Alarm**
- 8 **Daily UV Dose Alarm**



The GLOBE Program

Students of all ages can now participate in the worldwide GLOBE program using protocols developed just for Davis weather stations. See www.globe.gov for details.

GLOBE, The GLOBE Program, and the GLOBE logo are trademarks of the U.S. Government. Use of these trademarks and certification by this company that its products conform to specifications of The GLOBE Program do not imply endorsement of this company or its products by the U.S. Government.



NIST-Traceable Sensors

In the USA, the National Institute of Standards & Technology (NIST) develops and maintains the standards of measurement to which all others are ultimately traced. Numerous calibrations, tests, and measurement assurance programs are delivered directly to approximately 10,000 companies. From these companies, NIST-traceable intermediate service providers are the next link in a network that joins together the makers and users of precision instruments. Davis Instruments is proud to provide this calibration service in our California factory utilizing NIST-traceable references for those customers who require it. For those users who require this additional service, calibration of new and previously owned sensors is available. For a Vantage Pro2 with this service, add \$200. For the cost of individual sensors, contact us for pricing. Call, fax, or e-mail us for complete details.



Anemometers are wind-tunnel tested in our California factory.

WEATHER STATION SENSOR ACCURACY, RESOLUTION AND RANGE

Function		Vantage Pro2	Vantage Vue	U.S.A. Units			Metric Units		
				RESOLUTION	RANGE	ACCURACY ±	RESOLUTION	RANGE	ACCURACY ±
AGRICULTURAL	Evapotranspiration	●		0.01"	0 to 199.99"	5%	0.1 mm	0 to 1999.9 mm	5%
	Growing Degree-Days	○		0.1 Degree-Day	Unlimited		0.1 Degree-Day	Unlimited	
	Cooling/Heating Degree-Days	○	✓	0.1 Degree-Day	Unlimited		0.1 Degree-Day	Unlimited	
	Leaf Wetness	●		1	0 to 15	0.5	1	0 to 15	0.5
	Soil Moisture	●		1 cb	0 to 200 cb		1 cb	0 to 200 cb	
BAROMETRIC PRESSURE	Barometric Pressure (Elevation range: -999' to +15,000'; -600 to +4570 m)	✓	✓	0.01" Hg	16" to 32.5" Hg	0.03" Hg	0.1 mm Hg 0.1 mb	410 to 820 mm Hg 540 to 1100 mb or hPa	0.8 mm Hg 1.0 mb or hPa
	Three-Hour Trend	✓	✓	Slow ≥ 0.02" Hg Rapid ≥ 0.06" Hg	5-Position Arrow		Slow ≥ 0.5 mm (0.7 mb) Rapid ≥ 1.5 mm (2 mb)	5-Position Arrow	
HUMIDITY	Inside Humidity	✓	✓	1%	1% to 100%	3%	1%	1% to 100%	3%
	Outside Humidity	✓	✓	1%	1% to 100%	3%	1%	1% to 100%	3%
	Inside Dew Point	○	○	0.1°F	-60° to +140°F	3°F	0.1°C	-50° to +60°C	1.5°C
	Outside Dew Point	✓	✓	1°F	-105° to +130°F	3°F	1°C	-76° to +54°C	1.5°C
RAINFALL	Rainfall	✓	✓	0.01"	0 to 199.99"	4%	0.2 mm	0 to 6553 mm	4%
	Rate of Rainfall	✓	✓	0.01"/hr	0 to 96"/hr 0 to 40"/hr	5% ≤ 5"/hr	0.1 mm/hr	0 to 2438 mm/hr 0 to 1016 mm/hr	5% ≤ 127 mm/hr
SOLAR & UV	Solar Radiation	●		1 W/m2	0 to 1800 W/m2	5%	1 W/m2	0 to 1800 W/m2	5%
	Solar Energy	○		0.1 Ly	1999.9 Ly	5%	0.1 Ly	1999.9 Ly	5%
	UV Dose	●		0.1 MEDs	0 to 199 MEDs	5%	0.1 MEDs	0 to 199 MEDs	5%
	UV Index	●		0.1	0 to 16	5%	0.1	0 to 16	5%
TEMPERATURE	Inside Temperature	✓	✓	0.1°F	+32° to +140°F	1°F	0.1°C	0° to +60°C	0.5°C
	Outside Temperature (ISS)	✓	✓	0.1°F	-40° to +150°F	1°F	0.1°C	-40° to +65°C	0.5°C
	Outside Temp (Temp Stn)	●		1°F	-40° to +150°F	1°F	1°C	-40° to +65°C	0.5°C
	Soil or Water Temperature	●		1°F	-40° to +150°F	1°F	1°C	-40° to +65°C	0.5°C
	Inside Heat Index	○	○	0.1°F	+30°F to +165°F	3°F	0.1°C	-1°C to +74°C	1.5°C
	Outside Heat Index	✓	✓	1°F	-40° to +165°F	3°F	1°C	-40° to +74°C	1.5°C
	Temp-Hum-Sun-Wind Index	●		1°F	-90° to +165°F	4°F	1°C	-68° to +74°C	2°C
	Wind Chill	✓	✓	1°F	-110° to +135°F	2°F	1°C	-79° to +57°C	1°C
TIME/DATE	Time	✓	✓	1 minute	12/24 hours	8 sec/mo	1 minute	12/24 hours	8 sec/mo
	Date	✓	✓	month/day	Leap Year	8 sec/mo	day/month	Leap Year	8 sec/mo
	Sunrise & Sunset	✓	✓	1 minute	12 hours	1 minute	1 minute	24 hours	1 minute
WIND	Wind Direction	✓	✓	1°	0° to 360°	3°	1°	0° to 360°	3°
	Compass Rose	✓	✓	22.5°	16 compass points		22.5°	16 compass points	
	Wind Speed	✓	✓	1 mph 1 knot	2 to 180 mph 2 to 156 knots	5%	0.1 m/s 1 km/hr	1 to 80 m/s 3 to 290 km/hr	5%
	Direction of High Speed	✓	✓	22.5°	16 compass points		22.5°	16 compass points	
	Wind Run	○	○	0.01 mph 0.01 knot	Unlimited	5%	0.01 m/s 0.01 km/hr	Unlimited	5%

Except for rainfall, all variables are measured in U.S. units of measure and rounded to the nearest metric unit shown in the "Resolution" column.

- ✓ Included
 - Optional sensor required, shown on console
 - Optional, requires WeatherLink.
- Growing degree-days also requires Ag/Turf Management Module. Solar Energy requires Solar Radiation sensor.

"Resolution" refers to the number of digits or decimal places displayed on the console. For metric units, this is not the actual unit of measure except for rainfall. Our rain collector measures in true 0.01" or 0.2 mm increments. All other weather variables are measured and accumulated in U.S. units of measure, which are then converted to metric units for display purposes.

For complete specifications, visit our website at www.davisnet.com, then click on Support » Weather Support » Specification Sheets.

Things to consider when purchasing a weather station.

1. WHAT WEATHER VARIABLES ARE MEASURED AND RECORDED?

Most other stations offer barometric pressure, outside humidity and dew point, daily and yearly rainfall, wind speed and direction, wind chill, and outside temperature. Some also offer inside temperature and humidity, and a few even give you extra outside temperatures and rain rate. Only Vantage Pro2 or Vantage Vue give you those features, plus:

- Additional Rainfall Information: 15-minute, hourly, monthly, and yearly rainfall, and rainfall amounts for each of the last 24 storms.
- Additional Wind Speed Information: 10-minute average wind speed and dominant wind direction. In addition, with Vantage Vue, you get 2-minute average speed, high speed and direction in the last ten minutes.
- Apparent Temperature: Heat index, and with Vantage Pro2's optional solar radiation sensor, the temperature-humidity-sun-wind index.
- Vantage Pro2 optional Solar and UV Radiation Sensors: Greater awareness of the dangers of excessive exposure to the sun.
- For agricultural users: Evapotranspiration, leaf wetness, soil moisture, and soil temperature with Vantage Pro2 optional sensors.

2. HOW EASY IS IT TO SET UP?

With most competing stations, you need to install each sensor separately, which adds complication and takes time and effort. Vantage Pro2 and Vantage Vue are factory-assembled to make setup as easy as possible. Just complete a few minor assembly steps, insert the battery, and you're ready to mount the sensor suite. Mounting is further simplified by using our optional tripod. On Vantage Pro2, gain further accuracy by detaching the anemometer from the sensor suite and mounting it separately.

3. WHAT IS THE MAXIMUM TRANSMISSION DISTANCE?

The wireless transmission range for most competing stations is generally quite limited. Although range is highly variable (depending not only on the physical features of the land and structure but also on RF interference in the area), Vantage Pro2 and Vantage Vue will almost always outperform the competition. And we offer wireless repeaters and Vantage Connect should you wish to extend the range even further.

4. HOW MANY HIGHS AND LOWS ARE MEASURED AND RECORDED?

Most other stations simply give you the current readings. If highs and lows are available at all, they are usually quite limited. Only Vantage Pro2 and Vantage Vue give you the highs and lows (and/or totals or averages) for just about all weather conditions, with time and/or date for the last 24 days, months, or years for Vantage Pro2, and current and last 25 days, months, or years for Vantage Vue. No other stations on the market even come close. And

not only can you view the data numerically, you can also view on-screen graphs, for instant visual representations of long-term trends.

5. HOW OFTEN IS THE INFORMATION UPDATED?

The Vantage Pro2 and Vantage Vue transmitters send data to the console every 2½ seconds. Highly variable conditions (such as wind speed and direction) are updated with each packet, while less variable conditions are updated every 10 seconds. With most competing stations, the update interval is much longer: 30 seconds, or even up to 3 minutes. This may not seem important, but try watching the wind gust, or the rain suddenly come pouring down. It's very disconcerting to look out the window, see something happen weather-wise, and not see it reflected on the console right away.

6. HOW IS THE FORECAST GENERATED?

The competition generally bases their forecast on barometric pressure alone, which results in none too accurate a prediction. Vantage Pro2 and Vantage Vue use a sophisticated forecasting algorithm which takes into account not only barometric pressure, but also wind, rainfall, temperature, humidity, and longitude and latitude. The result? A much more accurate forecast. Not perfect, but even the guys with the satellite pictures don't always get it right!

7. HOW IS THE FORECAST DISPLAYED?

Competing stations use icons to show the forecast. Vantage Pro2 and Vantage Vue have similar icons, plus Vantage Pro2 has over 80 different forecast messages that scroll across the bottom of the display. None of the other stations have this. The Vantage Pro2's ticker tape also gives additional information depending on which key you press. Both Vantage Pro2 and Vantage Vue are able to display 10-minute average wind speed, the last 15 minutes and last 24 hours of rain. These are only a few examples of Davis stations' unique features. Competing stations don't have anything like this.

8. HOW MUCH DATA CAN YOU GRAPH ON THE SCREEN?

With Vantage Pro2 and Vantage Vue, you can graph just about every weather variable, with averages and highs and lows for most, and go back in time for minutes, days, months, and years. The competition typically graphs just one variable—barometric pressure—and typically just for the last 24 hours. With all the graphs on Vantage Pro2, and with the Weather Center feature on Vantage Vue, you can do tons of analysis, even without purchasing a software package. You'll find that the more dramatic the weather is, the more fun it is to look at the graphs. Just how windy is it, and how does it compare to the last wind storm? How much rain did we get this month as compared to last month?

9. CAN YOU USE THE STATION AT HIGHER ELEVATIONS?

Our stations can be used up to 15,000 feet (4570 m) in elevation. Many competing stations are limited

to 6,000 feet (1829 m) or below. If you're lucky enough to live and work—or perhaps enjoy a vacation home—in the mountains, you'll find that our Vantage Pro2 and Vantage Vue weather stations work just fine, no matter what the elevation.

10. IS THERE A COMPUTER INTERFACE?

If you'd like to do even more analysis, add our WeatherLink data logger and software package. The data logger stores data at the interval you choose (from one minute to two hours) for up to six months. Transfer the data whenever you like, or leave your computer on to have it transfer automatically every day. For some competing stations, no software package is available. Other stations do offer software, but don't include a data logger—so your PC must be on and the software running at all times.

11. HOW MANY ALARMS ARE THERE?

With Vantage Pro2 and Vantage Vue, alarms can be set for just about every weather variable, for just about any reason imaginable—up to 70 alarms for Vantage Pro2 and 22 for Vantage Vue. The alarms found on competing stations are generally quite limited.

12. WHAT IS THE ACCURACY, RESOLUTION, AND RANGE?

Vantage Pro2 and Vantage Vue generally beat their similarly-priced competition in accuracy, resolution, and range. It can be difficult to find the specs for competing stations. When we do find them, our testing shows that they are a bit, shall we say, optimistic. We are proud to publish our specs in our catalog and on our website, and stand behind them 100%.

13. HOW MANY PEOPLE ARE USING THE STATIONS?

There are many, many thousands of happy Davis weather station users around the country and around the world. Check out "Weather World 'Round" in the weather section of www.davisnet.com under "Cool Stuff" and click on links to visit websites of Davis weather station owners around the world. You'll find that many other Davis weather station owners participate as volunteer observers for the National Weather Service, the National Hurricane Center, and numerous local TV and radio stations. You can also visit www.weatherlink.com and see a worldwide map of Davis weather station owners who use our WeatherLinkIP software, which along with other features, creates its own weather website for your weather station.

14. HOW LONG HAS THE COMPANY BEEN IN BUSINESS?

Established in 1963, Davis Instruments opened up the home weather station market back in 1989. Our weather stations are assembled and tested right here in Hayward, California, where we have a full staff giving the best customer service and aftermarket support in the business. In addition, Davis Instruments Quality Management System is ISO 9001 certified.

CarChip Connect's cellular communication allows you to view your car's location in real time on the web.

New CarChip Connect® lets parents of teen drivers, employers—or anyone who owns a car—know when, where, and how their car is being driven, in real time.

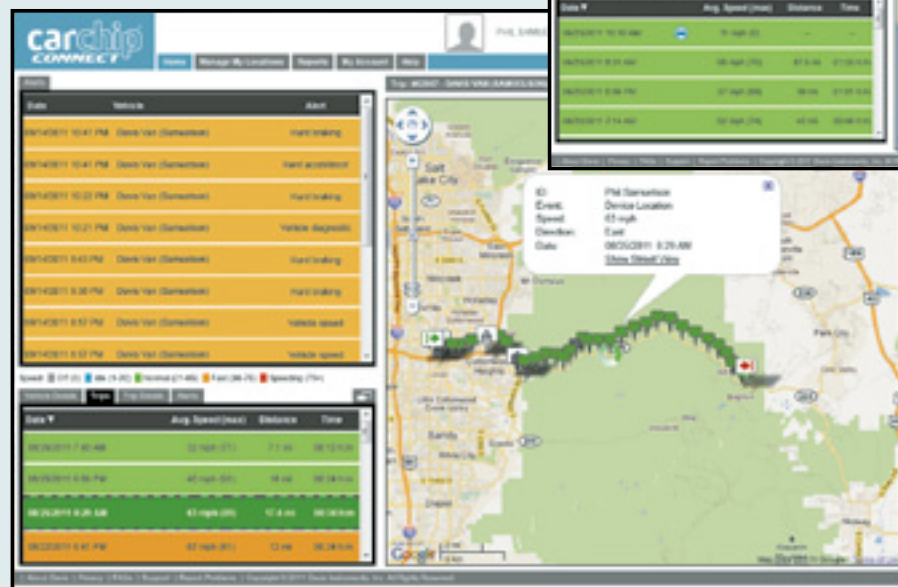
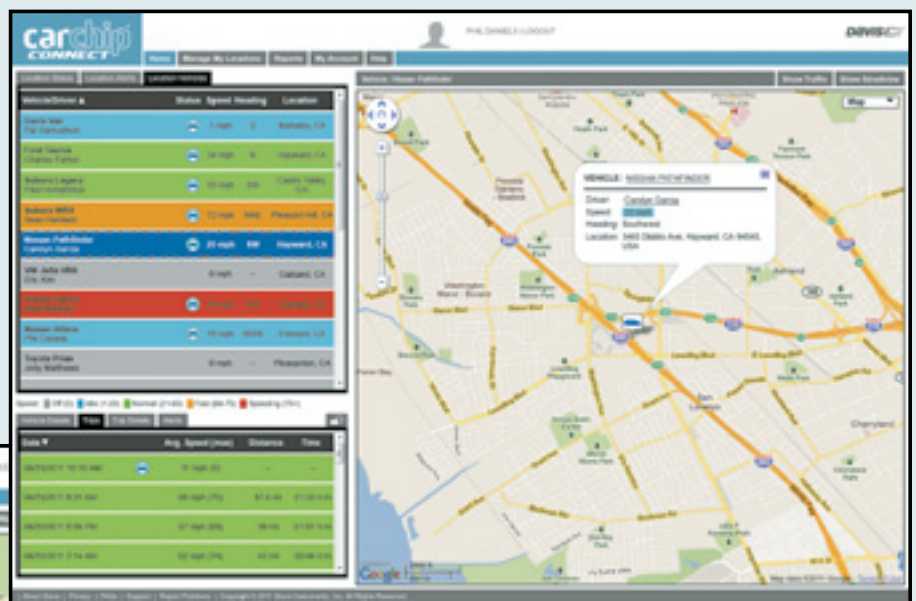
Simply plug the very small, but very powerful, GPS-enabled unit into the vehicle's OBD II (on-board diagnostics) port and log on to a secure, private, user-friendly website. You'll see your vehicle's location, its speed, driving routes, even engine diagnostic and performance data. You can also set custom alerts to notify you of any problems relating to driver speed, odd driving hours, going out of or into a pre-defined area, engine diagnostics and more.

With CarChip Connect, your car may be out of your sight, but it's never out of your range. Whether it is carrying the precious cargo of your inexperienced teen driver, or your business reputation, you can rest assured that your car or driver are where they should be, doing what they should be doing.

- Lets you view the real-time location of your vehicle. Receive updates as often as every minute.
- Provides information on an easy-to-use website from anywhere you have Internet access.
- Plugs in easily to the OBD II port. No need for professional installation.



AVAILABLE SUMMER 2012
PATENTED



CarChip Connect allows you to monitor real-time location and speed of your vehicle or teen driver.



Think your teen is a safe driver? Don't wait to find out.

Don't wait for a speeding ticket—or worse—to find out how your teen is driving. CarChip® Pro plugs instantly into the OBD II (on-board diagnostics) port in your car or truck, where it continuously logs vehicle and driver performance. Download the data to your PC, and you'll get complete details for each trip plus details on engine performance when and if the vehicle's check engine light comes on. Stores up to 300 hours of driving data. Download the data at any time and clear the memory to start again, or let CarChip Pro automatically overwrite the oldest data.



CarChip Pro plugs instantly and unobtrusively into the OBD II port in your car or truck.



Wish you could read your car's mind?

By detecting malfunctions early and taking the guesswork out of diagnosing problems, CarChip Pro can help you keep your car in peak running condition. Log any 4 out of 23 possible engine parameters, each of which can affect operation, emissions, and fuel economy. CarChip Pro also has user-settable and audible alarms for speed, hard braking, and quick acceleration.

8226 CarChip Pro \$99
PATENTED



CarChip Pro
Records 300 hours of trip details depending on the logging interval and number of parameters selected:

- Time and date for each trip.
- Distance traveled.
- Speed (can be logged as often as every second).
- Idle time.
- Hard accelerations and decelerations.
- Engine diagnostic trouble codes plus the status of engine parameters at the time the codes occurred.
- Time and date every time CarChip is connected or disconnected.
- Up to 4 out of 23 possible engine parameters, recorded every 5 to 60 seconds.
Choose from:

RPM	Battery voltage
Throttle position	Timing advance
Engine load	Coolant temperature
Fuel pressure	Air flow rate
Fuel system status	Intake air temperature
Short-term fuel trim	Intake manifold pressure
Long-term fuel trim	O ₂ sensor output voltage

Installation couldn't be easier.

1. Locate your car's OBD II port. You'll find it inside the car, under the driver's side steering column and dashboard.
2. Plug the data logger in. The blinking light tells you it's installed and ready to go.
3. Start driving. CarChip Pro will start collecting data your very next trip. Later, download to your PC for analysis, graphing, and charting.

CarChip Pro is also available in a fleet model with additional reporting capabilities specially designed for fleet managers. For more information, ask for our Fleet Management Tools catalog.

Software lets you:

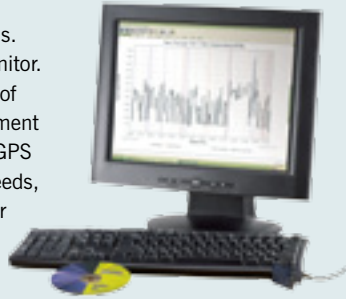
- Review and clear diagnostic trouble codes.
- View summary and detail reports for each trip.
- Sort business and personal trips.
- Set thresholds for excessive speed, acceleration, and braking.
- View emissions readiness status before your next smog check.
- Enter gasoline purchases and calculate mileage.
- Copy data to spreadsheets and text documents for further analysis.

System requirements:

- Windows XP and above and a USB port.

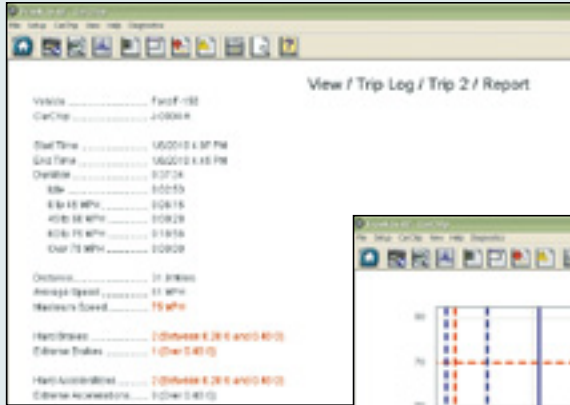
CarChip Pro can be used with most cars and trucks sold in the USA and Canada, model-years 1996 or later. For a list of excluded vehicles, visit www.carchip.com. Vehicles sold outside the USA and Canada may or may not be compatible.

Davis manufactures a complete line of vehicle monitoring systems. CarChip Pro is the all-in-one driving and engine performance monitor. For larger commercial vehicle fleets, Davis makes a fleet version of CarChip, CarChip Fleet Pro, which works with our Fleet Management Software to rank drivers and vehicle performance. Wireless and GPS accessories are also available. For truck and heavy equipment needs, our DriveRight products are the ideal choice. Call for more info or see our website: www.carchip.com.



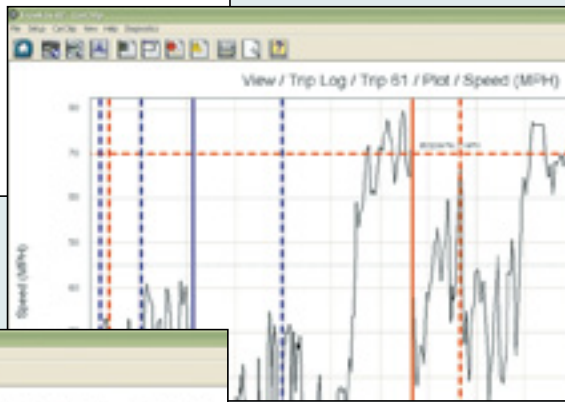
See sample computer screens below:

Actual screens may vary

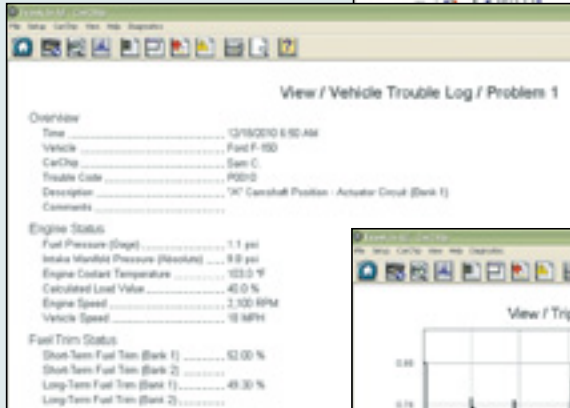


- « Trip log includes:
- Time & Date
 - Distance
 - Average Speed
 - Maximum Speed
 - Hard Brakings
 - Quick Accelerations

» Speed is recorded every second. Hard brakings are highlighted in red, quick accelerations in blue.



- « Trouble log shows diagnostic trouble code and description plus additional details on engine performance.



» Oxygen sensor output voltage is just one of the 23 selectable engine parameters you can choose to monitor.



- « Emissions readiness lets you find out if your car will pass the next smog test.

Emissions Readiness

Vehicle: Ford Escape

Status as of: 03/31/10 10:52 AM

Monitor	Supported	Status
Catalyst	Supported	Complete
Evaporative System	Supported	Complete
Secondary Air System	Supported	Complete
Oxygen Sensor	Supported	Complete
Oxygen Sensor Heater	Supported	Complete
EGR System	Supported	Complete
Milfire Monitoring	Supported	Complete
Fuel System Monitoring	Supported	Complete
Comprehensive Monitoring	Supported	Complete

Limited Warranty

We warrant our products to be free of defects in material and workmanship for one year from date of original purchase. While we make every effort to carefully manufacture our products to the highest standards of quality, occasionally parts may be found to be missing, defective, or damaged. If you have a defective part, return the product to us, shipping charges prepaid. Include proof of purchase and a written explanation of the trouble. During the warranty period, we will, at our option, either repair or replace the product free of charge. This warranty does not cover damage due to improper installation or use, lightning, negligence, accident, or unauthorized service, or to incidental or consequential damages beyond the Davis products themselves. Implied warranties are limited in duration to the life of this limited warranty. Some states do not allow limitations on how long an implied warranty lasts, or the exclusion or limitation of incidental and consequential damages, so the above limitation may not apply to you. This warranty gives you specific legal rights. You may have other rights, which vary from state to state or country to country.

Details, specifications, and prices are subject to change at any time without notice.

30-Day Money-Back Guarantee

If for any reason you are unsatisfied with anything purchased from us, return it within 30 days and we will gladly refund your purchase price. Shipping charges are not refundable. This guarantee does not apply to opened software packages.

Microsoft®, Windows®, Vista®, MySQL®, SQL Server®, Excel®, Access®, CAMEO®, Mac®, Watermark®, Rain Bird®, Rain Master®, Maryblyt™, iPhone®, iTunes®, and Android™ are trademarks of their respective companies.

©2011 Davis Instruments Corp.

Davis Instruments Quality Management System is ISO 9001 certified.

Contact Us

Customer Service Toll-Free Order Line:

(800) 678-3669
 Fax: (510) 670-0589
 E-mail: sales@davisnet.com
 Monday–Friday, 7:00 a.m.– 5:30 p.m. Pacific Time.
 Outside the USA or Canada:
 (510) 732-9229

Technical questions/troubleshooting:

Phone: (510) 732-7814
 Fax: (510) 670-0589
 E-mail: support@davisnet.com
 Monday–Friday, 7:00 a.m.– 5:30 p.m. Pacific Time.

General:

Phone: (510) 732-9229
 Website: www.davisnet.com
 E-mail: info@davisnet.com



ISO 9001 CERTIFIED COMPANY

Davis Instruments
3465 Diablo Avenue
Hayward CA 94545-2778
CHANGE SERVICE REQUESTED

PR55 Rev. D November 2011

The Way to Watch Weather Tough • Accurate • Affordable

VANTAGE VUE AND VANTAGE PRO2 WEATHER STATIONS

- **1,000 ft. (300 m) wireless range**
(3X farther than competing stations)
- **2.5 second update**
(up to 10X faster than the competition)
- **Post your weather to the Internet without a PC**
Join the WeatherLink Network
- **Transmit and receive data via cellular connection**
with Vantage Connect

