

PRECISION

WEATHER

INSTRUMENTS

Vantage PRO2

- TRANSMITS WEATHER DATA **WIRELESSLY** UP TO 1000'
- NOW TRANSMIT FOR MILES ON END WITH NEW **LONG-RANGE** REPEATERS
- **UPDATES** EVERY 2½ SECONDS

DAVIS 
Davis Instruments

What's New?

Here's just one of the many rave reviews we've gotten since the introduction of our Vantage Pro2 stations last year:

"I was blown away (no pun intended) by the range on the new Vantage Pro2 equipment! We were on one side of a twenty-story building during Hurricane Wilma, and the anemometer transmitter on the other side kept on ticking even after the anemometer itself took a debris hit."

—John Van Pelt, StormStudy.com.

This year, we're upping the ante even further with the introduction of our **Long-Range Repeaters**. Now you can transmit your weather data wirelessly for miles on end. See page 9.

We've also expanded your WeatherLink choices. With our new **WeatherLink for Alarm Output**, you can turn heaters, fans, or other devices on or off based on current weather conditions. See page 13.

Original Vantage Pro®

Because it uses a different radio, Vantage Pro2 is not compatible with our original Vantage Pro stations. However, WeatherLink and many of our installation options are still compatible.

Contact Us

As always, please contact one of our customer service representatives if you have any questions. We're always glad to help.

(800) 678-3669 Toll-Free Order Line, Monday through Friday, 7:00 a.m. to 5:30 p.m. Pacific Time. Our representatives can answer most questions and assist you with your purchase.

(510) 732-9229 For callers outside the USA or Canada.

(510) 732-7814 For answers to technical questions or help with trouble-shooting.

(510) 670-0589 Fax to Customer Service or Tech Support.

www.davisnet.com Visit our web site.

sales@davisnet.com E-mail to Customer Service.

support@davisnet.com E-mail to Technical Support.

info@davisnet.com General e-mail.

30-Day Money-Back Guarantee

If for any reason you are unsatisfied with anything purchased from us, return it within 30 days and we will gladly refund your purchase price. Shipping charges are not refundable. This guarantee does not apply to opened software packages.



The GLOBE Program

Students of all ages can participate in the worldwide GLOBE program with the new protocols developed just for Davis weather stations. See www.globe.gov.

GLOBE, The GLOBE Program, and the GLOBE logo are trademarks of the U.S. Government. Use of these trademarks and certification by this company that its products conform to specifications of The GLOBE Program do not imply endorsement of this company or its products by the U.S. Government.

With Vantage Pro2™, our wireless

The first and only stations in their price range to use frequency hopping spread spectrum radio, our wireless Vantage Pro2s transmit and receive data up to 1000' (300 m) line of sight. That's over three football fields in length—and three times farther than competing stations! At the same time, we've kept all the features that have made Vantage Pro famous. You'll get highs and lows (and/or totals or averages) for virtually all weather variables for the last 24 days, months, or years, and your own local forecast—all without a PC.

Graph icon shows which function is currently being displayed on the graph.

View current data or highs and lows for up to 24 different days, months, or years.

Inside compass rose, view wind direction to 1° resolution. Or view wind speed.


Compass rose with 16 compass points shows current and dominant wind direction.


Set over 70 alarms for multiple functions simultaneously.

Graph last 24 hours, days, or months of readings or highs and lows. View over 80 graphs including additional analysis of temperature, rain, rain rate, wind, and barometric pressure. All without a computer!

Vertical scale changes depending on what you are graphing.

Look for the following logos throughout the catalog:

 Identifies the stations or sensors that may be NIST certified. See page 20 for details.

 Identifies stations suitable for use with GLOBE protocol.

Ticker-tape display shows expanded forecast details and additional information on current conditions. Over 100 different messages!

weather stations are now better than ever.

Vantage Pro2 Features:

- Large 3½" × 6" (9 × 15 cm) LCD screen.
- Updates every 2½ seconds, so you'll always be on top of changing weather conditions.
- Backlit display for easy viewing.
- U.S. and metric units of measure.
- Optional WeatherLink data logger and software for even more analysis.

Forecast icons let you know whether to expect sun, part sun, clouds and rain, or snow.

Eight phases of the moon, from new moon through full moon.

Time and date fields let you view:

- Time of sunrise and sunset
- Current time and date
- Time and date of highs and lows
- Time and date of graphed data point

Wireless stations use frequency hopping spread spectrum radio. You'll get three times the transmission distance, improved reception through multiple walls, and greater immunity from RF interference.

Five-position trend arrow shows whether barometric pressure is rising, falling, or stable.

Fixed display area shows the most important weather variables at all times.

Variable display area lets you pick between:

- Inside or additional temperatures or soil moisture
- Inside or additional humidity, UV index, or leaf wetness
- Wind chill, dew point, or two different heat indices

Plus and minus keys simplify data entry.

Use arrow keys to scroll through data on graph or view highs and lows over time.

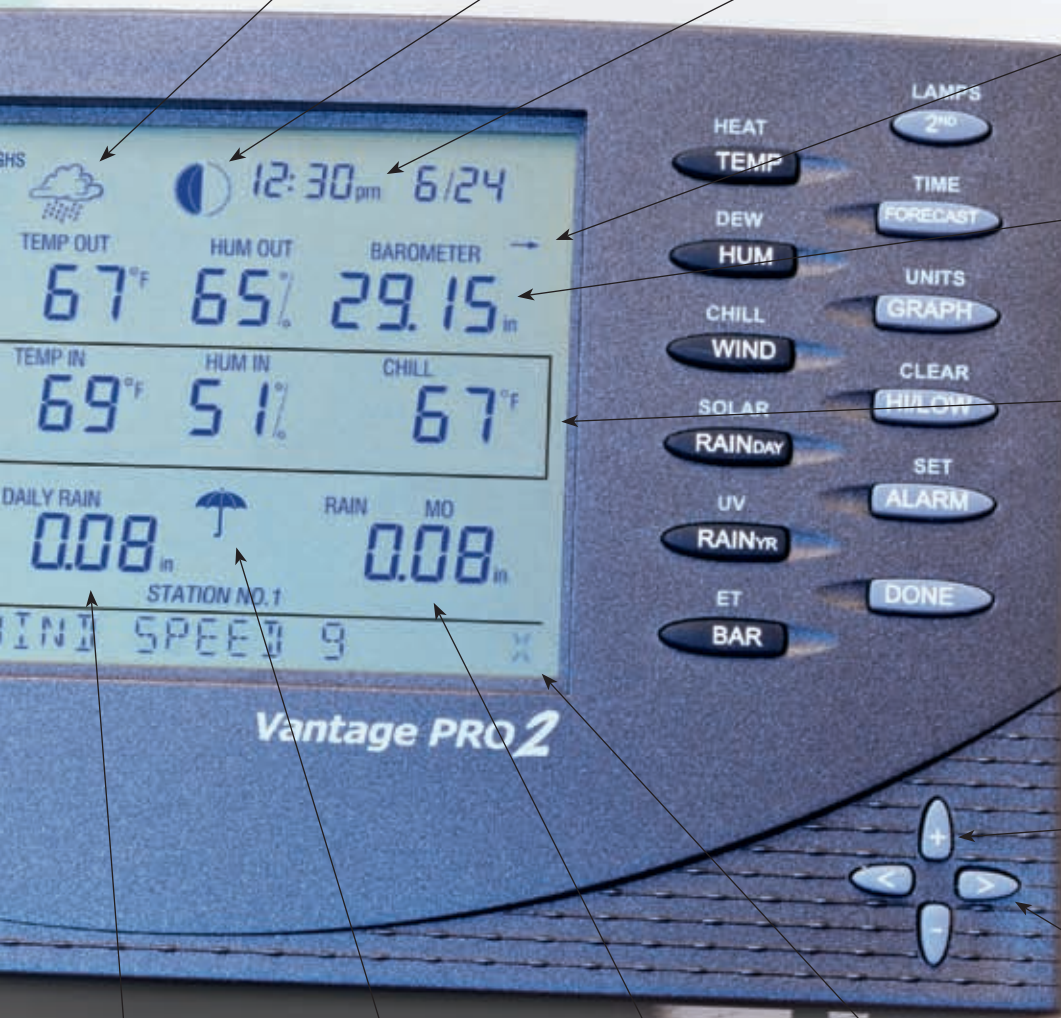
View daily rain or rain for this storm.

Umbrella icon appears when it is currently raining.

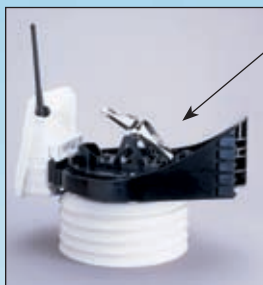
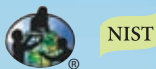
View monthly or yearly rainfall, rain rate, evapotranspiration, or intensity of solar radiation.

Blinks to let you know that data is being received.

Optional sensors or stations are required to view additional temperatures or humidities, soil moisture, UV index, solar radiation, and evapotranspiration.



Vantage Pro2™ weather stations are available in both wireless and cabled versions. All include a console and our innovative integrated sensor suite, which combines our rain collector, temperature and humidity sensors, and anemometer all into one package—making setup easier than ever and improving performance and reliability. Customize your weather station by adding additional consoles or one or more of the special-purpose stations shown on the following pages. Because regulations vary, wireless stations may or may not be available outside the USA.



The aluminum-plated **tipping bucket** in our rain collector is self-emptying, corrosion resistant, and laser calibrated for exceptional accuracy.

Anemometer includes both wind speed and wind direction sensors. Rugged components stand up to hurricane-force winds, yet are sensitive to the lightest breeze. Wind-tunnel tested to speeds in excess of 170 miles per hour (274 km/h).

Unlike the smaller rain collectors sold elsewhere, our **rain collector** meets the guidelines of the World Meteorological Organization. Reads rainfall amounts in 0.01" or 0.2 mm increments.

Weather-resistant shelter houses electronic components for added protection against the elements.

Wireless integrated sensor suite runs on solar power. Lithium battery provides backup at night and during cloudy, wintry days. (Solar panel is not included with cabled version.)

Models with **24-hour fan-aspirated radiation shields** include additional radiation shield plates, and a second solar panel, which powers the motor-driven fan.

Temperature and humidity sensors are located inside the radiation shield. The shield protects the sensors from solar radiation and other sources of radiated and reflected heat.

Optional mounting pole is just one of several installation options. For more, including our mounting tripod, see page 8.

6153 Wireless Vantage Pro2 with 24-Hour Fan-Aspirated Radiation Shield

Most components are factory assembled, so setup is as easy as possible. Just a few simple installation steps, and you're done.



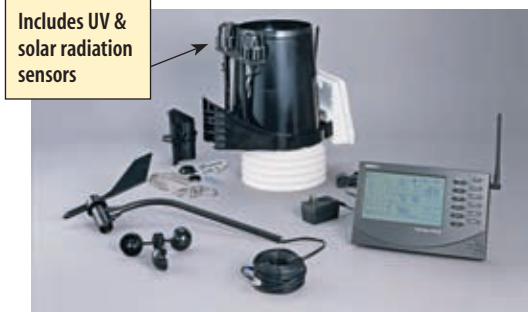
Includes 100' (30 m) cable from sensors to console.

6152C Cabled Vantage Pro2



Includes solar-powered transmitter

6152 Wireless Vantage Pro2



Includes UV & solar radiation sensors

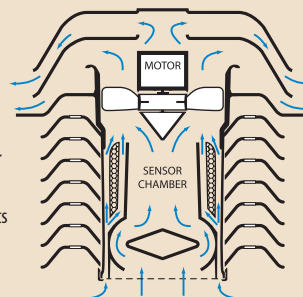
6162 Wireless Vantage Pro2 Plus

24-Hour Fan-Aspirated Radiation Shield

Models 6153 and 6163 include a 24-hour fan-aspirated radiation shield for maximum accuracy of temperature and humidity readings. A motor-driven fan draws air through the sensor chamber 24 hours a day, 7 days a week.

Air flow across the sensors is 500 feet per minute (2.5 m/s). At night, when the effects of radiation are less, the solar-powered model runs on battery

power and the air flow is 280 feet per minute (1.4 m/s). In far northern or southern latitudes, or in areas with extended periods of heavy cloud cover, there may not be enough sunshine to power the fan or recharge the battery during the winter. However, as the level of sunlight goes down, the need for fan aspiration also diminishes. The fan will start running and the battery will recharge as soon as sufficient sunlight returns.



Available in six different models. Choose the one that's right for you.



Choose a **cabled** station for most economical installation. Ideal for areas where lightning risk is minimal.

Choose **wireless** for easiest installation, additional sensor options, and reduced risk of lightning damage.

Choose a model with **24-hour fan aspiration** for maximum accuracy of temperature & humidity readings.



6152C Cabled Vantage Pro2	6162C Cabled Vantage Pro2 Plus	6152 Wireless Vantage Pro2	6162 Wireless Vantage Pro2 Plus	6153 Wireless Vantage Pro2 <small>with 24-Hour Fan-Aspirated Shield</small>	6163 Wireless Vantage Pro2 Plus <small>with 24-Hour Fan-Aspirated Shield</small>
\$495	\$895	\$595	\$995	\$795	\$1195

Console	Should be run using the included AC-power adapter. Add three C batteries (not included) for backup during power outages.	●	●				
	May be run full-time using three C batteries (not included). May also be run using the included AC-power adapter.			●	●	●	●
Integrated Sensor Suite	Includes rain collector, temperature and humidity sensors, and anemometer. UV and solar radiation sensors are optional.	●		●		●	
	Includes sensors listed above, plus pre-installed UV and solar radiation sensors. Save \$135 compared to the cost of purchasing these sensors separately!		●		●		●
	Includes 100' (30 m) cable for transmitting data from integrated sensor suite to console. May be extended to 1000' (300 m) with optional extension cables.	●	●				
Radiation Shield	Includes solar-powered transmitter with battery backup. Transmits up to 1000' (300 m) outdoors, line of sight. Typical range through walls under most conditions is 200' to 400' (60 to 120 m). Range may be extended even further—for miles on end—with optional repeaters.			●	●	●	●
	Standard radiation shield protects temperature and humidity sensors from solar radiation and reflected heat from rooftops or pavement. Optional Daytime Fan-Aspirated Radiation Shield Kit may be added to further reduce the effects of daytime radiation.	●	●	●	●		
Options	Includes 24-hour fan-aspirated radiation shield. Solar-powered fan with battery-backup draws air through the sensor chamber and exhausts it through the top of the shield for maximum accuracy of temperature and humidity readings.					●	●
	Add additional console/receivers to view data in more than one location.			Optional	Optional	Optional	Optional
	Add one or more special-purpose stations to read leaf wetness or soil moisture, or to read temperature and humidity in additional locations.			Optional	Optional	Optional	Optional

Add special-purpose stations or sensors.

Build your own customized weather station by adding one or more options or special-purpose stations. Each wireless Vantage Pro2 console/receiver can receive data from up to eight different transmitting stations. Start with one of our wireless Vantage Pro2 or Vantage Pro2 Plus stations (which include both the console and the integrated sensor suite), and add up to seven Temperature or Temperature/Humidity Stations. Or buy the Vantage Pro2 console alone (without the integrated sensor suite), and add up to eight special-purpose stations of your choice.

See the chart on page 21 for maximum number of each station type.



In Canton, Georgia, Andy and Angi Mills grow tomatoes, peppers, and okra with the help of a Wireless Leaf & Soil Moisture/Temperature Station.



Wireless Leaf & Soil Moisture/Temperature Station

Solar-powered station includes transmitter and backup battery inside weather-resistant shelter. To view the data, add a wireless Vantage Pro2 console/receiver, or Weather Envoy and WeatherLink. Each can receive data from *either*:

- A single fully-populated station with two leaf wetness sensors, four soil moisture sensors, and four temperature probes,
- or*
- Two partially-populated stations, one with two leaf wetness sensors and two temperature probes, and the other with four soil moisture sensors and four temperature probes.

Available in two models. Choose the model without sensors, and add only those you need to meet your requirements. Or choose the Complete Soil Moisture/Temperature Station, and add one or two leaf wetness sensors as desired.

6345 Wireless Leaf & Soil Moisture/Temperature Station without sensors \$195

6345CS Complete Soil Moisture/Temperature Station with 4 soil moisture sensors and 4 temperature probes \$545

For teachers participating in the GLOBE program, see the special protocol developed for the 6345CS at www.globe.gov, or visit our website at www.davisnet.com/links.

Leaf Wetness Sensor

Use to monitor the level of surface moisture on foliage, with range from 0 (completely dry) to 15 (saturated). Add up to two sensors to a single Wireless Leaf & Soil Moisture/Temperature Station. Includes 40' (12 m) cable.

6420 Leaf Wetness Sensor \$85



Soil Moisture Sensor

Watermark® soil moisture sensor uses electrical resistance to measure the moisture level of the soil. Does not require periodic maintenance during the growing season. Simply bury at the desired depth, then monitor moisture levels throughout the season. Add up to four sensors to a single Leaf & Soil Moisture/Temperature Station. Includes 15' (4.6 m) cable.

6440 Soil Moisture Sensor \$50



Stainless Steel Temperature Probe

Multi-purpose temperature probe with 2½" (64 mm)-long stainless steel housing. Use to measure temperature of air, soil, or water. Add up to four probes to a single Leaf & Soil Moisture/Temperature Station. Includes 15' (4.6 m) direct-burial cable.

6470 Stainless Steel Temperature Probe \$40



Wireless Temperature/Humidity Station

Battery-powered station includes temperature and humidity sensors inside protective radiation shield, and transmitter and lithium battery inside weather-resistant shelter. Expected battery life is six to nine months. To view the data, add a wireless Vantage Pro2 console/receiver or Weather Envoy and WeatherLink. Includes hardware for mounting on fence post or pole. Mounting pole is not included.

6382 Wireless Temperature/Humidity Station \$235



Wireless Temperature Station

Battery-powered station includes stainless steel temperature probe with 12' (3.6 m) cable, transmitter and battery inside weather-resistant shelter, and mounting hardware. To view the data, add a wireless Vantage Pro2 console/receiver, or Weather Envoy and WeatherLink. Expected battery life is six to nine months.

6372 Wireless Temperature Station \$175



Anemometer Transmitter Kit

Solar-powered kit for use with wireless Vantage Pro2 or Pro2 Plus. Allows you to mount the anemometer in a different location than the rain collector and the rest of the integrated sensor suite, up to 1000' (300 m) from the console/receiver. For longer distances, add one or more wireless repeaters. Kit includes transmitter inside weather-resistant shelter, solar panel, battery, and mounting hardware.

6332 Anemometer Transmitter Kit \$160

Solar Radiation Sensor

To measure solar radiation and solar energy. Diffuser element and housing are carefully designed for accurate cosine response. Silicon photo diode provides good match to solar spectrum. Two-piece housing minimizes radiation heating, allows convection cooling of the sensor, and prevents the trapping of water or dust. To mount next to a rain collector, add our Sensor Mounting Shelf (not included).



6450 Solar Radiation Sensor \$160

Includes 4' (1.2 m) cable. (When sold pre-installed on a Vantage Pro2 Plus, includes 3' (0.9 m) cable.) Use Standard 4-Conductor Extension Cable. Maximum cable length is 125' (38 m) from sensor to integrated sensor suite.
 7876-008 Cable, 8' (2.4 m) \$10 7876-040 Cable, 40' (12 m) \$18 7876-100 Cable, 100' (30 m) \$40

UV Sensor

Measures the sunburning portion of the UV spectrum. Allows you to display UV index, dose rate, and daily and accumulated dose. Multi-layer filter provides a spectral response that closely matches the Erythema Action Spectrum. Diffuser provides excellent cosine response. Two-piece housing minimizes radiation heating, allows convection cooling of the sensor, and prevents the trapping of water or dust. To mount next to a rain collector, add our Sensor Mounting Shelf (not included).



6490 UV Sensor \$350

Includes 4' (1.2 m) cable. (When sold pre-installed on a Vantage Pro2 Plus, includes 3' (0.9 m) cable.) Use Standard 4-Conductor Extension Cable. Maximum cable length is 125' (38 m) from sensor to integrated sensor suite.
 7876-008 Cable, 8' (2.4 m) \$10 7876-040 Cable, 40' (12 m) \$18 7876-100 Cable, 100' (30 m) \$40



Daytime Fan-Aspirated Radiation Shield Kit

An economical solution for adding the benefits of fan aspiration to your wireless or cabled Vantage Pro2 or Pro2 Plus. Half the cost of our 24-hour fan-aspirated radiation shield, but nearly 75% as effective in reducing the effects of daytime radiation. Solar-powered fan runs during the day. Since there is no backup battery, the fan will cease running when night falls and the effects of radiation are less. Kit includes fan, solar panel, additional radiation shield plates, and hardware, as shown in inset photo. Larger photo shows the kit as installed on a wireless Vantage Pro2. Note that this kit is not compatible with our original Vantage Pro stations.

7747 Daytime Fan-Aspirated Radiation Shield Kit \$100



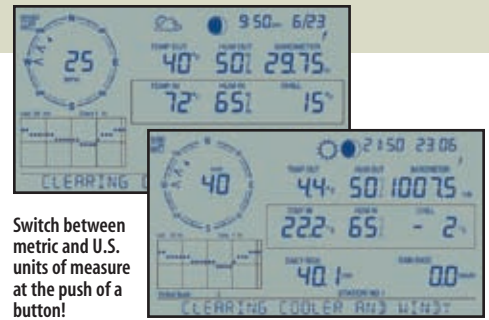
Attaches easily to the outside of the Vantage Pro2 integrated sensor suite.

Sensor Mounting Shelf

For mounting Vantage Pro2 solar radiation and/or UV sensors. Rigid shelf with anodized aluminum posts and stainless steel hardware attaches easily next to the rain collector on the outside of the integrated sensor suite.

6673 Sensor Mounting Shelf \$25

Add another console, and get the weather report wherever you are—indoors or out.



Switch between metric and U.S. units of measure at the push of a button!

Vantage Pro2 Console/Receiver

To view data from a wireless Vantage Pro2 station in additional locations, or for use with any of the special-purpose wireless stations shown on the previous pages. Receive data directly from the outdoor sensors or use as a repeater, retransmitting the data from one console/receiver to another. Includes all the features shown on pages 2-3.

6312 Vantage Pro2 Console/Receiver \$295



Use the console on a desk or at a table.



Or mount it on a wall.

Customize your installation.



40' (12 m) Anemometer Cable

All Vantage Pro2 stations, whether wireless or cabled, include a cable that lets you mount the anemometer and rain collector up to 40' (12 m) apart. When the cable is not needed, simply lash the coil out of the way on your mounting pole. Hardware for mounting on a pole or post is included; mounting pole is not. Extend the cable up to 540' (165 m) for a wireless station or 1000' (300 m) for a cabled station using optional extension cables. See page 20.



Mounting Pole Kit

Optional Mounting Pole Kit includes two galvanized steel poles, connector, and mounting hardware. Poles measure 19½" (0.50 m) and 21" (0.53 m) long. Assemble the two together to make a single 37½" (0.95 m) long pole. Outside diameter is 1½/16" (33 mm).

7717 Mounting Pole Kit \$30



Mounting Tripod

Optional tripod makes installation even easier. Brackets at the base of legs tilt to mount on roof or uneven terrain. Made of galvanized steel. Includes two 36¾" (0.92 m)-long poles, which may be used separately or together to make a single 69¾" (1.77 m)-long pole.

7716 Mounting Tripod \$65

Extend the range of your wireless station—for miles on end!

For longer distances or to improve reception in troublesome areas, add one or more wireless repeaters. Use up to four repeaters in a daisy chain, retransmitting from a single Vantage Pro2 integrated sensor suite or special-purpose station. Or build a network of up to four repeaters and eight wireless stations, with some repeaters listening to multiple stations, each with their own unique ID. See the chart on page 21 for the maximum number of each station type. For use with a wireless Vantage Pro2 console/receiver or Weather Envoy with a firmware date of May 2005 or later. To use a repeater with one of these stations manufactured before that date, update the firmware using our Vantage Pro2 Updater.

NEW! **Long-Range Wireless Repeaters**

In our testing, we achieved an incredible four miles (6.4 km) of transmission distance using two of our new long-range repeaters with Yagi antennas. We can't promise that you'll achieve quite the same results, since range is highly variable depending on antenna height, the terrain and foliage, buildings and other man-made structures, and RF interference. But we still think you'll be impressed! Ideal for agricultural or research applications where long distances are an issue. AC-powered model includes power adapter. Solar-powered model includes solar panel and lithium backup battery. Antennas are sold separately. In the USA, FCC regulations require that you select from the antennas shown below. Outside the USA, you will need to purchase third-party antennas in compliance with local regulations.

7653 Long-Range Repeater, AC-Powered \$200

7654 Long-Range Repeater, Solar-Powered \$250

Antenna Combination	Multiplier	Maximum Transmission Distance under optimal conditions **		
Dipole – Dipole *	1.00	1000'	0.2 mile	300 m
Dipole – Omni	1.58	1580'	0.3 mile	475 m
Dipole – Yagi	3.16	3160'	0.6 mile	950 m
Omni – Omni	2.50	2500'	0.5 mile	750 m
Omni – Yagi	5.00	5000'	1.0 mile	1500 m
Yagi – Yagi	10.00	10,000'	1.9 miles	3000 m

* Dipole antennas are found on all of our wireless weather stations and on our standard repeaters.

** Typical distance will be less. Outdoors, line of sight with minor obstructions or interference, typical distance is about 0.50 to 0.80 times the maximum. Through walls or in areas with high RF interference, typical distance may be as low as 0.20 to 0.40 times the maximum.

NEW! **Antennas for Long-Range Repeaters**

For use with our long-range repeaters. Each repeater requires two antennas: one to receive the data, and another to retransmit it. Omni antennas transmit or receive in all directions. Yagi antennas transmit or receive from a single direction, but have a longer transmission distance. Mix or match to suit your needs; use the chart to determine the distance you'll be able to achieve depending on the antennas used.

7656 Omni Antenna \$150

7660 Yagi Antenna \$125



Standard Wireless Repeaters

Ideal for most applications. Uses the same dipole antenna found on all of our wireless stations. Range is up to 1000' (300 m) outdoors, line of sight. Typical range through walls under most conditions is 200' to 400' (60 to 120 m). AC-powered model includes power adapter. Solar-powered model includes solar panel and lithium backup battery.

7626 Standard Wireless Repeater, AC-Powered \$150

7627 Standard Wireless Repeater, Solar-Powered \$200



Vantage Pro2 Updater

Take advantage of the latest developments with our Vantage Pro2 Updater. Simply plug it into the port on your Vantage Pro2 console or Weather Envoy and press the start button. Your console or Envoy will be automatically updated with the latest version of our firmware. Future updates may be downloaded from our website at no charge.

6311VP2 Vantage Pro2 Updater \$125

Also available on loan for one-time use at a reduced cost. Contact our Customer Service or Tech Support Department for details.



On a budget? These stations offer professional quality at ec

Our Weather Wizard III and Weather Monitor II offer sophisticated, professional quality for home, business, or scientific use. Add WeatherLink for detailed, long-term analysis using your PC, and you'll have a powerful computer weather station at a surprisingly affordable price.



See the "Options & Accessories chart on page 18 for a complete look at which options may be used with which station.

Weather Monitor II®

A full-featured weather station. Basic model includes barometric pressure, inside and outside temperature, inside humidity, wind speed and direction, and wind chill. With the complete station, you'll also get outside humidity, dew point, and daily and accumulated rainfall. You'd pay \$200 for the outside humidity sensor and rain collector if purchased separately. Save \$100 with our Complete Weather Monitor II!

7440 Weather Monitor II \$295

7440CS Complete Weather Monitor II

with rain collector and temperature/humidity sensor \$395

NIST



Perception II®

An indoor weather station requiring no installation—just plug it in using the included AC-power adapter. Use to monitor your wine cellar, greenhouse, or other climate-dependent area. Measures temperature, humidity, and barometric pressure. So accurate, it's even used by automobile racers to tune their carburetors for current air density conditions. Backlit display for easy viewing.

NIST

7400 Perception II \$150



Rain Collector

Designed to meet the guidelines of the World Meteorological Organization, our self-emptying rain collector with tipping bucket is exceptionally accurate. Measures in 0.01" or 0.2 mm increments.

7852 Rain Collector for Wizard or Monitor \$75

Includes 40' (12 m) cable. Use Standard 4-Conductor Extension Cable. Maximum cable length is 900' (270 m) from rain collector to console including junction box cable.

7876-008 Cable, 8' (2.4 m) \$10 7876-100 Cable, 100' (30 m) \$40

7876-040 Cable, 40' (12 m) \$18 7876-200 Cable, 200' (60 m) \$70

NIST

Temperature/Humidity Sensor

Measures outside temperature, relative humidity, and dew point. For use with Weather Monitor II. Replaces the external temperature sensor included with the station.

7859 Temperature/Humidity Sensor for Monitor \$125

Includes 40' (12 m) cable. Use Standard 6-Conductor Extension Cable. Maximum cable length is 300' (91 m) from sensor to console including junction box cable.

7878-040 Cable, 40' (12 m) \$22



NIST

Perception II, Weather Wizard III, & Weather Monitor II



7440CS Complete Weather Monitor II

All stations include the following features:

- Time in 12- or 24-hour format and date.
- U.S. and metric units of measure.
- Highs and lows.
- Sequential scan and display of readings.
- Alarms for selected functions.
- Calibration of some functions for increased accuracy under difficult conditions.
- Backlighting of LCD display for easy viewing (except Weather Wizard III).

All stations include the following components:

- Console with reversible base for use on desk, shelf, or wall.
- AC-power adapter with battery backup (battery not included).
- Quick and easy plug-in cable connections using modular RJ connectors like those found on your telephone.

Wizard & Monitor stations also include:

- Anemometer with 40' (12 m) cable for wind speed and direction
- Outside temperature sensor with 25' (7.6 m) cable

Optional components include:

- Rain collector (for Wizard or Monitor)
- Temperature/humidity sensor (for Monitor only)

Extension cables:

Be sure to use the appropriate extension cable listed for each component. See the complete chart on page 20. Although the RJ connector may fit, most standard telephone extension cords are not compatible.

onomical prices.



Anemometer



Weather Wizard III®

The most-requested features at an economical price. Basic model includes inside and outside temperature, wind speed and direction, and wind chill. With the complete station, you'll also get daily and accumulated rainfall. You'd pay \$75 for the rain collector if purchased separately. Save \$20 with our Complete Weather Wizard III!

7425 Weather Wizard III \$195

7425CS Complete Weather Wizard III with rain collector \$250



Radiation Shield

The most effective passive shelter available. Protects temperature sensor from solar radiation and other sources of radiated and reflected heat. Multi-plate construction for maximum airflow. Assembly required.

7714 Radiation Shield \$65

For Wizard or Monitor, or for Wireless Temperature Station or Leaf & Soil Moisture/Temperature Station



Rain Collector Shelf

Provides a horizontal surface for mounting the Rain Collector. May be used with Sensor Mounting Arm or mounted on other structures or surfaces. Aluminum shelf is white powder coated for added durability.

7704 Rain Collector Shelf \$35



Sensor Mounting Arm

For use with Weather Wizard III or Weather Monitor II. Aluminum arm is white powder coated for added durability. Includes mounting hardware and ground wire.

7702 Sensor Mounting Arm \$65



Rain Collector

Sensor Mounting Arm

Rain Collector Shelf



Radiation Shield

Link Isolator Kit

For upgraded protection against electrical disturbances, install the Link Isolator between the WeatherLink data logger and your computer. Includes 40' (12 m) cable and power adapter. For use with WeatherLink models 7862 or 7855 only. For other models, equivalent protection is already built in.



7764 Link Isolator Kit \$55

Protected Junction Box

Provides upgraded protection against the electrical disturbances that can come through sensor cables, including radio frequency interference, electrostatic discharges, and voltage surges. Includes two 16' (5 m) ground wires. For use with Weather Monitor II or Weather Wizard III only.



7740 Protected Junction Box \$65

Choose the station that suits your needs	Perception II	Weather Wizard III	Complete Weather Wizard III	Weather Monitor II	Complete Weather Monitor II
Barometric Pressure	●			●	●
Inside Temperature	●	●	●	●	●
Outside Temperature		●	●	●	●
Wind Direction		●	●	●	●
Wind Speed		●	●	●	●
Wind Chill		●	●	●	●
Rainfall		Optional	●	Optional	●
Inside Humidity	●			●	●
Outside Humidity				Optional	●
Dew Point				Optional	●

Wizard and Monitor calculate and display wind chill according to the original National Weather Service Formula. A new formula was adopted in 2001. For wind chill using this formula, view the data using WeatherLink or choose Vantage Pro2 instead.

Your weather data, your PC. What could be better?



For the ultimate in weather monitoring, add WeatherLink® to any of our weather stations. The data logger fits neatly into the weather station console or Weather Envoy, storing weather data even when it's not connected to your PC. Later, download the data and use the software for detailed analysis and graphing.

Data Storage & Transfer

- **User-Selectable Storage Interval.** Choose 1, 5, 10, 15, 30, 60, or 120 minutes. Store up to six months' worth of data depending on the storage interval. (Up to four months for Perception, Wizard, or Monitor.)
- **Standard Data Logger Models.** Log and store data, even when the data logger is not connected to your PC. Transfer the data as often as you like, or leave the software running to transfer it automatically each day.
- **Alarm Output & Irrigation Control Models.** Include our standard data logger plus a connector block that allows you to connect your Vantage Pro2 console or Weather Envoy to your irrigation system or to a heater, fan, or other device.
- **Streaming Data Logger Models.** Provide a continuous stream of data to a PC or to a ham radio with a TNC modem. At the same time, they'll log and store the data for later download—just like our standard data loggers!

Expanded Reporting

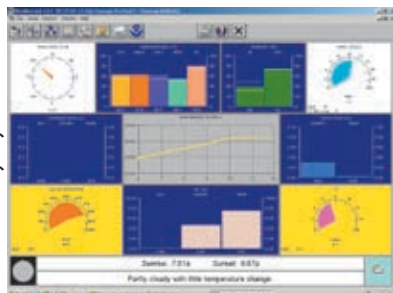
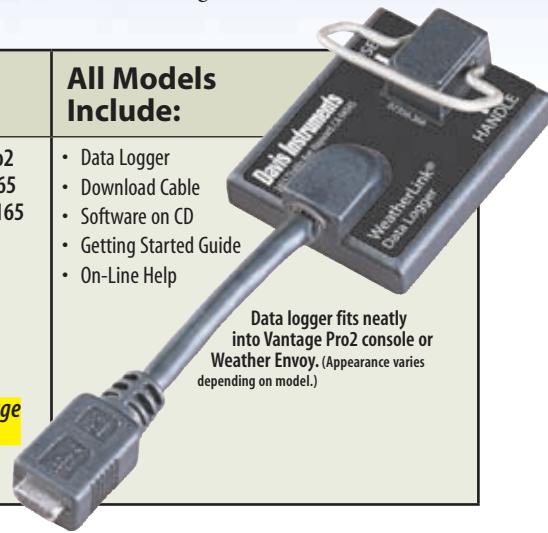
- **More Weather Data.** View weather information not available on the console, including heating degree days, cooling degree days, and fuel-oil demand.
- **Optional Sensor Reporting.** With optional UV and solar radiation sensors, get details on sunburn risk and solar energy.
- **Forecast & Moon Phase.** With Vantage Pro2, you can see the forecast and moon phase right on the console. But now even Wizard and Monitor owners can get the latest forecast and view the phases of the moon using WeatherLink.

Sharing Your Weather Data

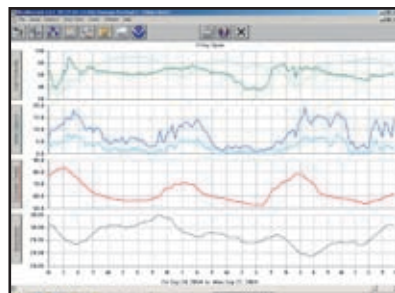
- **Create Your Own Reports.** Data can be exported to most popular spreadsheets, databases, and word processing programs.
- **Weather Website.** Create your own weather website or post weather conditions to a LAN. Add graphs, text lines, or scrolling ticker tapes, and upload other files (such as webcam images) along with weather data.
- **Weather World 'Round.** Send your URL to news@davisnet.com and we'll add it to our growing list of Davis stations around the world.
- **Citizen Weather Observer Program.** Submit your data to the National Weather Service to help develop improved weather prediction models.
- **The GLOBE Program.** Participate with other schools in an international weather-related program for students from elementary through high school.



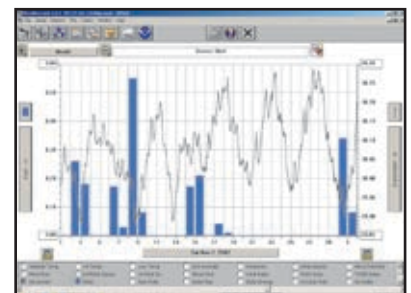
Standard Data Logger Models	All Models Include:
<p>WeatherLink for Vantage Pro2 6510USB Windows USB Version \$165 6510SER Windows Serial Version \$165 6520 Mac OS X Version \$165</p> <p>WeatherLink for Perception, Wizard, or Monitor 7862 Windows Serial Version \$165 7855 Mac OS X Version \$165</p> <p><i>See the chart on the next page for more details.</i></p>	<ul style="list-style-type: none"> • Data Logger • Download Cable • Software on CD • Getting Started Guide • On-Line Help <p>Data logger fits neatly into Vantage Pro2 console or Weather Envoy. (Appearance varies depending on model.)</p>



See current conditions at a glance on the instant weather bulletin.



Graph data on a daily, weekly, or yearly basis.



View multiple weather variables at the same time to see their relationships.

Actual screens may vary.

When there's no time to waste. WeatherLink gives you the critical data you need—now!



WeatherLink for Emergency Response Teams with Streaming Data Logger

For use with the free CAMEO® (Computer-Aided Management of Emergency Operations) software developed by NOAA and the EPA. With Vantage Pro2 or Weather Envoy, provides the real-time weather data needed to map the footprint of a hazardous plume, predict its dispersion, and help make critical public safety decisions—all at just a fraction of the cost of other systems. For more about CAMEO, visit www.epa.gov/ceppo/cameo.

6550 WeatherLink for Emergency Response Teams \$295

WeatherLink for APRS with Streaming Data Logger

For ham radio operators, including storm chasers and volunteer weather watchers. Connects a Vantage Pro2 console or Weather Envoy to a ham radio with TNC modem for instant transmission of both your location and the local weather conditions via APRS.

6540 WeatherLink for APRS \$195



With his chase vehicle outfitted with a Vantage Pro2, John Van Pelt of StormStudy.com keeps an eye on approaching hurricanes and tornadoes.

WeatherLink for Alarm Output with Connector Block



Now you can turn heaters, fans, and other devices on or off using your weather station. Software walks you quickly and easily through the choices—yet the possibilities are almost unlimited! For each of four outputs, you can enter up to eight different weather parameters. Enter threshold values for each, select from nine different test conditions, and link the entries together as you choose. For example, you could activate a fan to cool your house—but only if the difference between the inside and outside temperatures is more than 5°F, it's more than 72°F inside, and it's between 5:00 p.m. and 6:00 a.m. Our connector block provides the interface between your weather station and an electrical device. For high-power devices, you may also need to add electrical relays (not supplied by Davis).

6544 WeatherLink for Alarm Output \$295

WeatherLink for Irrigation Control with Connector Block

Use your weather station to turn your irrigation system on or off. Connector block connects directly to most irrigation systems including Rain Bird, Rain Master, and Toro. For industrial controllers, provides electronic pulses for wind, rain, and ET. For homeowners, looks at rain and ET values to determine when to inhibit watering. Can also set console alarms to inhibit watering when temperatures are too low or winds are too high. ET monitoring requires solar radiation sensor. Connection to a PC is not required except for initial setup.

6560 WeatherLink for Irrigation Control \$295

Choose from nine different WeatherLink models.

Extra User License Kit includes software on CD and extra user license.

System Requirements	Model	Price	For Use With	Designed For	Data Logger	Notes	Extra User License Kit
Windows, USB Windows 98SE/2000/ME/XP	6510USB	\$165	Vantage Pro, Vantage Pro2, or Weather Envoy	General Purpose	Standard	For newer PCs with USB connections	6510X \$25
Windows, Serial Windows 95/NT4.0/98/2000/ME/XP	6510SER	165	Vantage Pro, Vantage Pro2, or Weather Envoy	General Purpose	Standard	For older PCs with serial port connections. Weather website features require Internet Explorer 4 or above.	6510X 25
All models with streaming data loggers or connector blocks include all our normal WeatherLink features, plus additional features designed for special purposes. To download one of these models via USB, add our # 8434 USB-to-Serial Cable \$20	6540	195	Vantage Pro, Vantage Pro2, or Weather Envoy	APRS (Ham Radio)	Streaming	Connects to a ham radio with TNC modem.	6510X 25
	6544	295	Vantage Pro, Vantage Pro2, or Weather Envoy	Alarm Output	Standard plus Connector Block	Use to turn heaters, fans, or other devices on or off depending on weather conditions. (For high-power devices, you may also need to add electrical relays.)	6510X 25
	6550	295	Vantage Pro, Vantage Pro2, or Weather Envoy	Emergency Response	Streaming	For use with the free CAMEO software developed by NOAA and the EPA.	6510X 25
	6560	295	Vantage Pro, Vantage Pro2, or Weather Envoy	Irrigation Control	Standard plus Connector Block	Connects directly to irrigation system. Connection to a PC is not required except for initial setup.	6510X 25
	7862	165	Perception, Weather Wizard, or Weather Monitor	General Purpose	Standard	For older PCs with serial port connection. Weather website features require Internet Explorer 4 or above.	7862X 25
Mac Mac OS X v 10.1 or above	6520	165	Vantage Pro, Vantage Pro2, or Weather Envoy	General Purpose	Standard	Does not log data from leaf wetness, soil moisture, solar radiation, or UV sensors. Does not include Citizen Weather Observer or GLOBE capabilities.	6520X 25
	7855	165	Perception, Weather Wizard, or Weather Monitor	General Purpose	Standard	Requires a USB serial adapter. Does not include Citizen Weather Observer, GLOBE, weather forecast, or moon phase features.	7855X 25

Plug-in modules expand WeatherLink's capabilities.



On his 1400-acre corn and soybean farm in Iowa, Al Schafbuch uses WeatherLink to track degree days and rainfall.

For use with WeatherLink 6510USB, 6510SER, 6540, 6544, 6550, 6560, or 7862. Some reports require the use of optional sensors. For owners of GroWeather who wish to upgrade to Vantage Pro2, includes the ability to import files from GroWeatherLink.

Agricultural/Turf Management Software Module

Optional software module adds specialized reports for farmers, growers, and turf managers, with user-defined growing season and 24-hour period. You'll get evapotranspiration, chilling requirement, leaf wetness hours, and soil temperature hours—all with user-entered thresholds and starting and ending dates. Plus growing degree-days and temperature-humidity hours (with user-entered names of crops, pests, or diseases) and crop water management (with irrigation values and user-entered K-factor profiles).

6511 Agricultural/Turf Management Module \$95

E-Mail/Phone Alert Software Module

Be alerted whenever conditions approach critical—24 hours a day, 7 days a week. Choose e-mail for detailed information on alarm conditions plus regularly scheduled updates on current weather conditions. Or choose the phone alert, with a special alarm tone telling you to check your weather station console or WeatherLink for details.

6512 E-Mail/Phone Alert Module \$35

For use with WeatherLink 6510USB, 6510SER, 6540, 6544, 6550, 6560, or 7862. Because systems vary, the phone alert may not work outside the USA.



Eugene Kramer, coordinator of the Emergency Services & Disaster Agency in Freeburg, Illinois relies on Vantage Pro for critical real-time data on weather conditions.

Receive data directly from the outdoor sensors—no console required!

Weather Envoy, when used along with WeatherLink, will collect and store data from the outdoor sensors. Download to your computer at your convenience, then use the WeatherLink software to view current conditions, graph and chart historical data, or even create your own weather web pages.

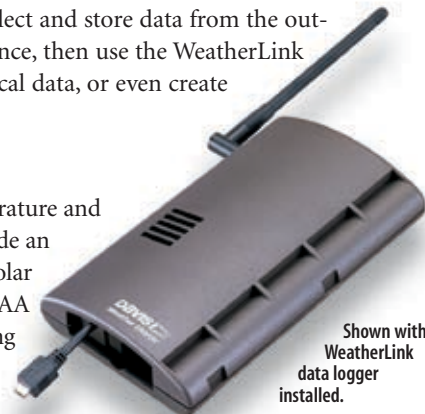
Weather Envoy™

Weather Envoy includes its own barometer and inside temperature and humidity sensors. Both the wireless and cabled versions include an AC-power adapter. Either may also be run using one of our solar power kits. The wireless model may also be run using three AAA batteries. Expected battery life is four to six months, depending on the logging interval. Batteries should also be added to the cabled model for backup during power outages.

6316 Wireless Weather Envoy \$195
6316C Cabled Weather Envoy \$165



Requires WeatherLink data logger and software package (not included). See pages 12–13.



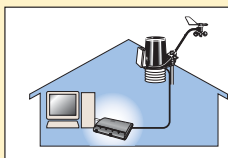
Shown with WeatherLink data logger installed.



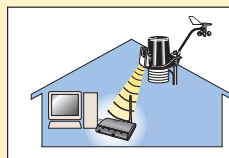
6328 with 24-Hour Fan-Aspirated Radiation Shield

Save up to \$100 by using Weather Envoy instead of a Vantage Pro2 console or console/receiver.

Install wireless or cabled Weather Envoy in your home or office, next to your computer for easy and convenient downloading. For field installation options, see page 21.

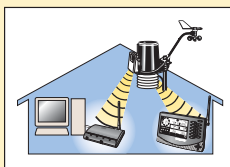


Cabled Home/Office Station

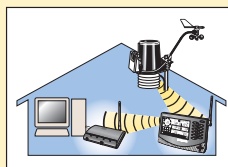


Wireless Home/Office Station

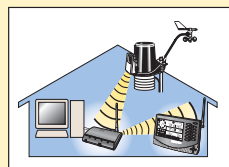
Or use in addition to a wireless Vantage Pro2 console/receiver.



Transmit to both simultaneously



Retransmit data to Weather Envoy



Retransmit from Weather Envoy

A cabled Weather Envoy can be used with ONE of the following:

- Cabled Integrated Sensor Suite, or
- Cabled Integrated Sensor Suite Plus

A wireless Weather Envoy can be used with ALL of the following:

- One wireless Integrated Sensor Suite or Integrated Sensor Suite Plus
- One Anemometer Transmitter Kit
- One Leaf & Soil Moisture/Temperature Station
- Three Temperature Stations or one Temperature Station and two Temperature/Humidity Stations.

Integrated Sensor Suite

For use with Weather Envoy and WeatherLink. Includes all the features of the Vantage Pro2 or Pro2 Plus integrated sensor suites shown on pages 4–5. Mounting pole not included.



Wireless Integrated Sensor Suite

6322 with Standard Radiation Shield \$325
6323 with 24-Hour Fan-Aspirated Radiation Shield \$525

Cabled Integrated Sensor Suite

6322C with Standard Radiation Shield \$275

Wireless Integrated Sensor Suite Plus

with UV and solar radiation sensors
6327 with Standard Radiation Shield \$725
6328 with 24-Hour Fan-Aspirated Radiation Shield \$925

Cabled Integrated Sensor Suite Plus

with UV and solar radiation sensors
6327C with Standard Radiation Shield \$675

Remote locations? No problem.

Add a shelter, solar power kit, or telephone modem adapter.

Solar Power Kit for Wireless Vantage Pro2 or Wireless Weather Envoy

Powers the wireless console/receiver or Weather Envoy. (Outdoor sensors are powered by the solar panel that is included with the station.) Includes solar panel, regulator circuit, rechargeable battery, and 20' (6 m) cable.

6610 Solar Power Kit for Wireless Vantage Pro2 \$150

Solar Power Kit for Cabled Vantage Pro2 or Cabled Weather Envoy

Powers both the console (or Weather Envoy) and the outdoor sensors. Includes solar panel, regulator circuit, rechargeable battery, and 16' (4.9 m) cable.

7707 Solar Power Kit for Cabled Vantage Pro2 \$250



Glenn Waldner snapped this photo at his home in Manitoba, Canada, where wintertime temperatures drop to -40°C and below. He writes, "I had been looking for a weather station for quite awhile. I looked at other brands, but picked the wireless Vantage Pro2 because it was the closest to what I wanted at a good price, and it's expandable!"

Rain Collector Heater



For use in cold climates to measure freezing rain or the moisture content of snowfall. Requires access to AC power; may not be run using a solar power kit. Includes 24-watt, 24-volt heater with thermal cut-off switch, control unit, insulating reflective blanket, and AC-power adapter.

7720 Rain Collector Heater \$160

Includes 50' (15 m) cable. Use Shielded 4-Conductor Extension Cable. Maximum cable length is 120' (36 m).
7895-050 Cable, 50' (15 m) \$25 7895-100 Cable, 100' (30 m) \$48



Warren Rytting of Rytting Farms in Colorado, shown here with his son Zach, writes, "I have been using your Weather Wizard III for years at home, and have enjoyed it greatly. So when I started my own potato farm this year, it was a no-brainer who I was going to trust in the field (literally). I ordered your Vantage Pro2 with a Leaf & Soil Moisture/Temperature station and Weatherlink software. I live 15 miles away from my field, so it's hard to be there every second of the day. The Vantage Pro 2 has helped me with irrigation scheduling and weather forecasting. Thanks for a quality product."

Complete System Shelter

To locate your station console and other components outside, at a field or remote location. Weather-resistant NEMA 4X enclosure provides protection from the elements for the Vantage Pro2 console or console/receiver with WeatherLink data logger. Measures $15\frac{1}{2}'' \times 7\frac{3}{4}'' \times 13\frac{1}{2}''$ ($395 \times 195 \times 345$ mm).

7724 Complete System Shelter \$225



Complete System Shelter with Vantage Pro2 console.

Multi-Purpose Shelter

Use to shelter any of the following sub-systems:

- Weather Envoy with WeatherLink data logger.
- Weather Wizard III or Weather Monitor II console with WeatherLink data logger and protected junction box.

Measures $3\frac{3}{4}'' \times 9\frac{1}{2}'' \times 12\frac{1}{2}''$ ($95 \times 240 \times 320$ mm).

7728 Multi-Purpose Shelter \$75



Multi-Purpose Shelter with Weather Envoy.

Telephone Modem Adapter



For transmission of data from any of the serial port versions of our WeatherLink data loggers using a modem.

Telephone Modem Adapter

6533 for WeatherLink for Vantage Pro2 \$7
7870 for WeatherLink for Wizard/Monitor \$7

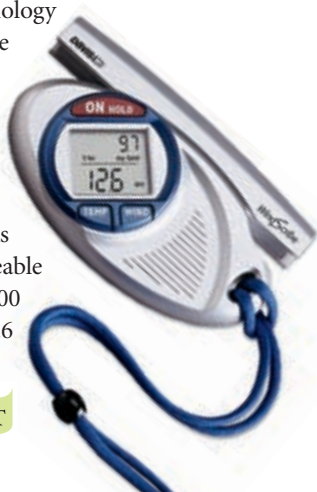
On the go? Take along a pocket-sized wind speed indicator.

WindScribe™

Ultrasonic wind meter uses patented technology to read current wind speed, highest positive speed (headwind), lowest negative speed (tailwind), 5-second average, and running average. Select from mph, km/h, fpm, m/s, f/s, or knots, plus temperature and wind chill in tenths of °F or °C. Sensitive to breezes as low as 0.4 mph, yet withstands winds as high as 150 mph. Includes replaceable 3-volt lithium battery. Battery lasts up to 600 hours. Dimensions: 5" × 3" × 3/4" (12.7 × 7.6 × 1.9 cm). Weight: 3 1/2 oz (100 grams).

276 WindScribe \$129

NIST



Use Three Ways



Handheld with adjustable lanyard.



Tripod mount with 1/4" thread.



Mounting bracket with Velcro® strap.

Hand-Held Wind Speed Indicators

For instantaneous wind speed readings, where you need them, when you need them. Rugged, high-impact plastic with corrosion-resistant components, protective vinyl case, and attached wrist lanyard.

Wind Wizard™

Reads wind speed in miles/hour, meters/second, and Beaufort. Readout dial is supported on sapphire jewel bearings and steadied by a rare-earth magnetic dampening system. Folding handle quickly and securely latches into place. No batteries needed. Dimensions: 3 5/8" × 2 7/8" × 1" (92 × 73 × 25 mm) with handle folded. Weight: 2.5 oz (71 g).

281 Wind Wizard \$49⁹⁹



Turbo Meter™

Reads wind speed in miles/hour, knots, feet/minute, or meters/second. Turbine suspended on sapphire jewel bearings responds to the lightest of winds. Three-digit display offers excellent viewing contrast in bright sunlight or at night. Requires three AAA alkaline batteries (not included). Dimensions: 4 5/8" × 2 5/8" × 1 1/8" (118 × 66 × 30 mm). Weight: 3 oz (85 g) not including batteries.

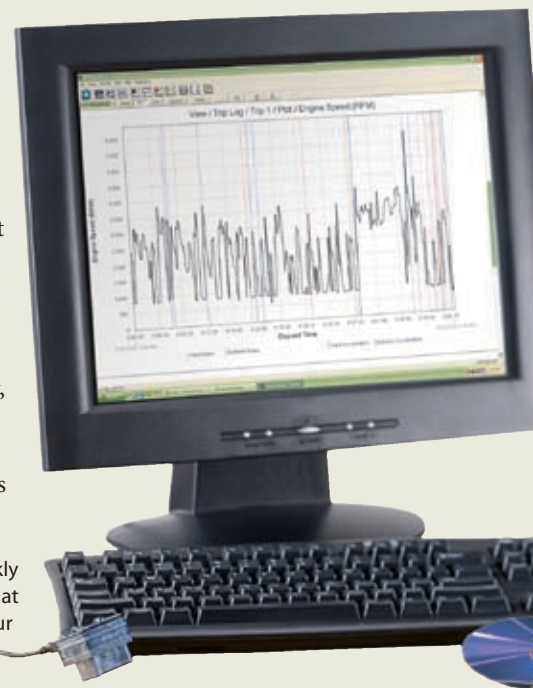
271 Turbo Meter \$165



NIST

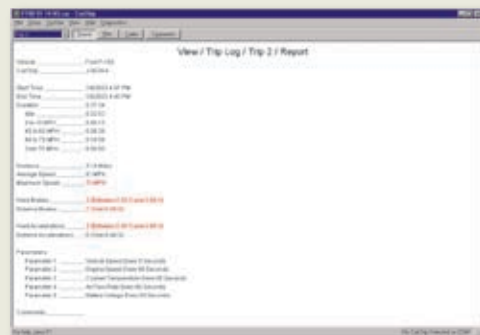
In addition to weather stations, Davis Instruments also has a complete line of vehicle monitoring systems. First introduced in 1994, our DriveRight on-board consoles and Fleet Management Software are used by business and industry around the world. Now, with the introduction of CarChip, that same powerful data logging is available to you.

CarChip downloads quickly and easily to your PC. See at a glance how you—or your teen—are driving.

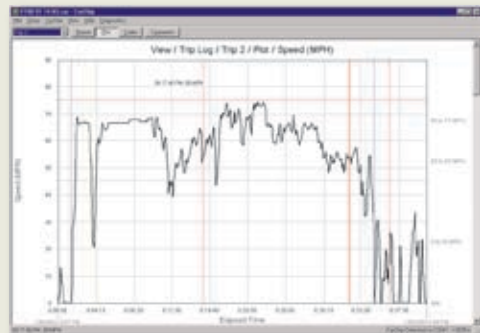


Trip log includes:

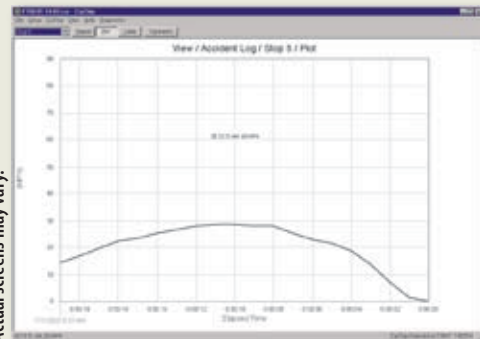
- Time & Date
- Distance
- Average Speed
- Maximum Speed
- Hard Brakings
- Quick Accelerations



Speed is recorded every 5 seconds. Hard brakings are highlighted in red, quick accelerations in blue.



Accident log shows the speed for each of the last 20 seconds before coming to a complete stop. (E/X models only.)



Actual screens may vary.

Think your teen is a safe driver? Don't wait to find out.

CarChip®. Don't wait for a speeding ticket—or worse—to find out how your teen is driving. CarChip plugs instantly into the OBDII (on-board diagnostics) port in your car or truck, where it continuously logs vehicle and driver performance. Download the data to your PC, and you'll get complete details for each trip plus details on engine performance when and if the vehicle's check engine light comes on. Stores up to 75 hours of driving data. Download the data at any time and clear the memory to start again, or let CarChip automatically overwrite the oldest data.

8211 CarChip \$139

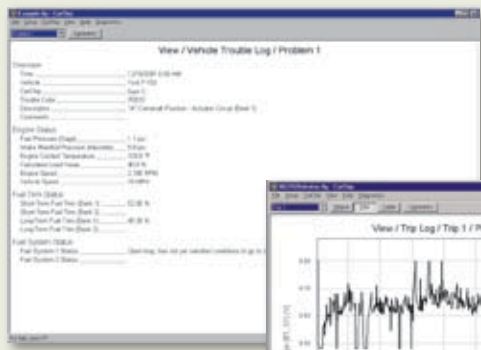
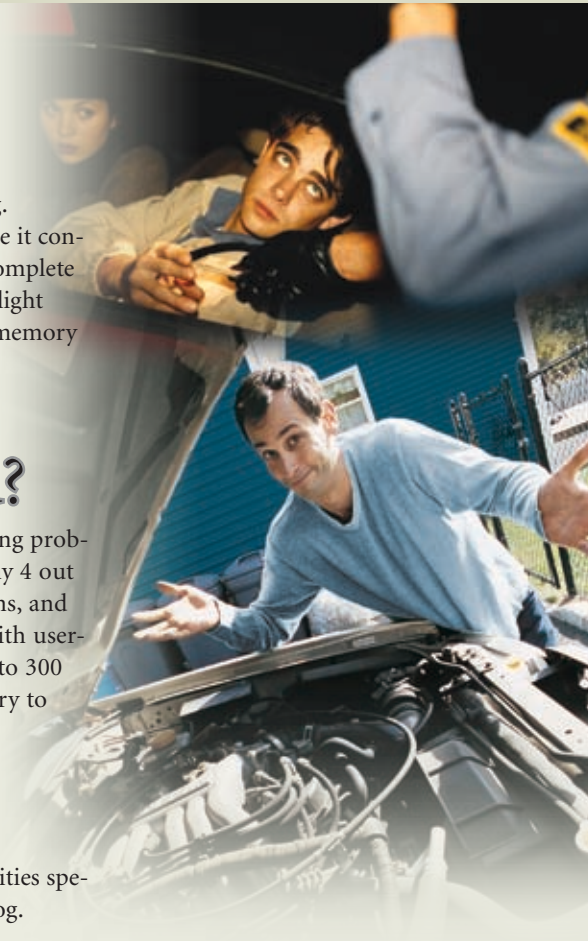
Wish you could read your car's mind?

CarChipE/X®. By detecting malfunctions early and taking the guesswork out of diagnosing problems, CarChipE/X can help you keep your car in peak running condition. Log any 4 out of 23 possible engine parameters, each of which can affect operation, emissions, and fuel economy. Choose standard CarChipE/X or CarChipE/X with Alarm, with user-settable alarms for speed, hard braking, and quick acceleration. Stores up to 300 hours of driving data. Download the data at any time and clear the memory to start again, or let CarChipE/X automatically overwrite the oldest data.

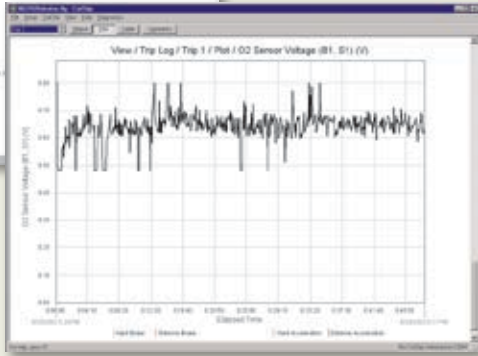
8221 CarChipE/X \$179

8225 CarChipE/X with Alarm \$199

CarChip Fleet. CarChip is also available in a fleet model with additional reporting capabilities specially designed for fleet managers. For more information, ask for our full-line DriveRight catalog.



Trouble log shows diagnostic trouble code and description plus additional details on engine performance.



Oxygen sensor voltage is just one of the 23 selectable engine parameters you can choose to monitor. (E/X models only.)

Installation couldn't be easier.

1. Locate your car's OBDII connector.

You'll find it inside the car, no more than three feet from the driver's seat.

2. Plug the data logger in.

The blinking light tells you it's installed and ready to go.

3. Start driving.

CarChip will start collecting data your very next trip. Later, download to your PC for analysis, graphing, and charting.



CarChip®

Records 75 hours of trip details:

- Time and date for each trip.
- Distance traveled.
- Speed (logged every five seconds).
- Idle time.
- Hard accelerations and decelerations.
- Engine diagnostic trouble codes plus the status of engine parameters at the time the codes occurred.
- Time and date every time CarChip is connected or disconnected.

CarChipE/X®

Records 300 hours of trip details:

- All the features of CarChip.
- Up to 4 out of 23 possible engine parameters, recorded every 5 to 60 seconds. Choose from:

RPM	Battery voltage
Throttle position	Timing advance
Engine load	Coolant temperature
Fuel pressure	Air flow rate
Fuel system status	Intake air temperature
Short-term fuel trim	Intake manifold pressure
Long-term fuel trim	O ₂ sensor output voltage

Software lets you:

- Review and clear diagnostic trouble codes.
- View summary and detail reports for each trip, including vehicle speed every 5 seconds.
- Set thresholds for speed, acceleration, and braking, and view the number of times these thresholds were exceeded.
- Copy data to spreadsheets and text documents for further analysis.

System requirements:

- Windows 98SE/2000/ME/XP and USB port.

For most cars and trucks sold in the USA and Canada, model-years 1996 or later. For a list of excluded vehicles, visit www.carchip.com. Vehicles sold outside the USA and Canada may or may not be compatible.

Options & Accessories

With our options and accessories, you can build your own customized weather station to suit your needs. See the chart on page 21 for the maximum number of wireless stations that can report to a single Vantage Pro2 console/receiver or Weather Envoy.



High in the mountains of Ecuador, Ed Bohn of the International Minerals Corp. uses a Vantage Pro to record baseline meteorological data for their gold exploration program.

Option or Accessory		Wireless							Cabled								
		6152 Vantage Pro2 \$595	6153 with Fan-Aspirated Rad Shield \$795	6162 Vantage Pro2 Plus \$995	6163 with Fan-Aspirated Rad Shield \$1195	6345 Leaf & Soil Moisture/Temp \$195	6372 Temperature Station \$175	6382 Temperature/Humidity Station \$235	6152C Vantage Pro2 \$495	6162C Vantage Pro2 Plus \$895	7400 Perception II \$150	7425 Weather Wizard III \$195	7425CS Complete Weather Wizard III \$250	7440 Weather Monitor II \$295	7440CS Complete Weather Monitor II \$395	Inches	Millimeters
Wireless	6312 Vantage Pro2 Console/Receiver \$295	•	•	•	•	•	•									9 1/2 x 6 x 1 1/2	240 x 150 x 38
	6316 Wireless Weather Envoy \$195	•	•	•	•	•	•									5 x 2 1/8 x 7	130 x 60 x 180
	6332 Anemometer Transmitter Kit \$160	•	•	•	•											3 7/8 x 6 7/8 x 1 1/8	93 x 162 x 30
	7626 Standard Wireless Repeater, AC-Power \$150	•	•	•	•	•	•									5 x 2 1/8 x 7	130 x 60 x 180
	7627 Standard Wireless Repeater, Solar-Power \$200	•	•	•	•	•	•									5 x 2 1/8 x 7	130 x 60 x 180
	7653 Long-Range Repeater, AC-Power \$200	•	•	•	•	•	•									5 x 2 1/8 x 7	130 x 60 x 180
Sensors	6420 Leaf Wetness Sensor \$85					•										2 x 3 1/2 x 1/2	50 x 90 x 13
	7852 Rain Collector II \$75										•	•				8 1/4 diameter x 9 1/2	165 diameter x 240
	6440 Soil Moisture Sensor \$50					•										1/4 diameter x 2	22 diameter x 50
	6450 Solar Radiation Sensor \$160	•	•					•								2 x 2 1/4 x 2 1/4	50 x 70 x 57
	6470 Temperature Probe, Stainless \$40					•										1/4 diameter x 2	6 diameter x 50
	7859 Temperature/Humidity Sensor \$125												•			3 1/2 x 3 1/4 x 1 1/4	90 x 83 x 38
	6490 UV Sensor \$350	•	•					•								2 x 2 1/4 x 2 1/4	50 x 70 x 57
Computer Interface	6510 WeatherLink for Vantage Pro2, Windows \$165	•	•	•	•	•	•	•	•							1 1/8 x 1 1/8 x 5/8	30 x 35 x 15
	6520 WeatherLink for Vantage Pro2, Mac \$165	•	•	•	•	•	•	•	•							1 1/8 x 1 1/8 x 5/8	30 x 35 x 15
	6540 WeatherLink for APRS \$195	•	•	•	•			•	•							1 1/8 x 1 1/8 x 5/8	30 x 35 x 15
	6544 WeatherLink for Alarm Output \$295	•	•	•	•	•	•	•	•							1 1/8 x 1 1/8 x 5/8	30 x 35 x 15
	6550 WeatherLink for Emergency Response Teams \$295	•	•	•	•			•	•							1 1/8 x 1 1/8 x 5/8	30 x 35 x 15
	6560 WeatherLink for Irrigation Control \$295	•	•	•	•	•	•	•	•							1 1/8 x 1 1/8 x 5/8	30 x 35 x 15
	7862 WeatherLink for Wizard/Monitor, Windows \$165									•	•	•	•	•		4 1/4 x 1 1/4 x 1/2	108 x 45 x 13
	7855 WeatherLink for Wizard/Monitor, Mac OS X \$165									•	•	•	•	•		4 1/4 x 1 1/4 x 1/2	108 x 45 x 13
Power	6610 Solar Power Kit \$150	•	•	•	•											5 x 2 1/8 x 7	130 x 60 x 180
	7707 Solar Power Kit \$250							•	•							3 1/4 x 9 1/2 x 12 1/2	95 x 240 x 318
Installation & Mounting Options	7716 Mounting Tripod \$65	•	•	•	•	•	•	•	•		•	•	•	•		30 x 33 x 52	762 x 838 x 1320
	7717 Mounting Pole Kit \$30	•	•	•	•	•	•	•	•		•	•	•	•		1 5/16 diameter x 37 1/2	33 diameter x 950
	7740 Protected Junction Box \$65										•	•	•	•		5 3/4 x 5 3/4 x 1 1/4	145 x 145 x 32
	7714 Radiation Shield \$65					•	•				•	•	•	•		7 1/2 x 8 1/2 x 6	190 x 215 x 152
	7704 Rain Collector Shelf \$35										•	•	•	•		10 x 8 3/4 x 3 1/2	255 x 222 x 90
	7720 Rain Collector Heater \$160	•	•	•	•			•	•		•	•	•	•		4 x 2 1/4 x 3 1/4	102 x 57 x 20
	6673 Sensor Mounting Shelf \$25	•	•					•								2 x 9 x 3 1/2	50 x 228 x 2
	7702 Sensor Mounting Arm \$65										•	•	•	•		32 x 2 x 7 1/4	813 x 50 x 197
	7767 Surge Protector \$14	•	•	•	•			•	•		•	•	•	•		1 1/2 x 1 1/2 x 1 1/4	38 x 38 x 32
	7768 Surge Protector Shelter \$18	•	•	•	•			•	•		•	•	•	•		3 1/2 x 5 3/4 x 2 1/4	88 x 145 x 55
	7724 Complete System Shelter \$225	•	•	•	•			•	•							15 1/2 x 7 1/4 x 13 1/2	395 x 197 x 343
	7728 Multi-Purpose Shelter \$75									•	•	•	•	•		15 1/2 x 7 1/4 x 13 1/2	395 x 197 x 343
	7747 Daytime Fan-Aspirated Radiation Shield \$100	•	•					•	•							9 7/8 x 4 1/4	240 x 120

Sensor Accuracy, Resolution, and Range

Function		Vantage Pro2	Perception II	Weather Wizard III	Weather Monitor II	U.S.A. Units			Metric Units <small>(See note below)</small>		
						Resolution	Range	Accuracy ±	Resolution	Range	Accuracy ±
						Agricultural	Evapotranspiration	●			
Growing Degree-Days	○				0.1 Degree-Day		Unlimited		0.1 Degree-Day	Unlimited	
Leaf Wetness	●				1		0 to 15	0.5	1	0 to 15	0.5
Soil Moisture	●				1 cb		0 to 200 cb		1 cb	0 to 200 cb	
Barometric Pressure	Barometric Pressure (Elevation range: -1000' to +12,500'; -300 to +3800 m)	✓	✓		✓	0.01" Hg	26" to 32" Hg	0.03" Hg	0.1 mm Hg	660 to 810 mm Hg	0.8 mm Hg
		✓	✓		✓				0.1 mb	880 to 1080 mb	1.0 mb
		✓							0.1 hPa	880 to 1080 hPa	1.0 hPa
Three-Hour Trend	✓				Slow ≥ 0.02" Hg Rapid ≥ 0.06" Hg	5-Position Arrow		Slow ≥ 0.5 mm (0.7 mb) Rapid ≥ 1.5 mm (2 mb)	5-Position Arrow		
One-Hour Trend			✓	✓	Change ≥ 0.02" Hg	3-Position Arrow		Change ≥ 0.5 mm (0.7 mb, 0.7 hPa)	3-Position Arrow		
Humidity	Inside Humidity	✓	✓		✓	1%	10% to 90%	5%	1%	10% to 90%	5%
	Outside Humidity	✓			●	1%	0% to 100%	3%	1%	0% to 100%	3%
	Dew Point	✓			●	1°F	-105° to +130°F	3°F	1°C	-76° to +54°C	1.5°C
Rainfall	Rainfall	✓				0.01"	Day: 0 to 99.99" Storm: 0 to 99.99" Month: 0 to 199.99" Year: 0 to 199.99"	4%	0.2 mm. (Rounded to 1 mm at 2000 mm and above.)	Day: 0 to 9999 mm Storm: 0 to 9999 mm Month: 0 to 19,999 mm Year: 0 to 19,999 mm	4%
				●	●	0.01"	Day: 0 to 99.99" Total: 0 to 99.99"	4%	0.2 mm	Day: 0 to 999.8 mm Total: 0 to 9999 mm	4%
	Rate of Rainfall	✓				0.01"	0 to 99.99"/hr	5%	0.1 mm	0 to 1999.9 mm/hr	5%
Solar & UV	Solar Radiation	●				1 W/m ²	0 to 1800 W/m ²	5%	1 W/m ²	0 to 1800 W/m ²	5%
	Solar Energy	○				0.1 Ly	1999.9 Ly	5%	0.1 Ly	1999.9 Ly	5%
	UV Dose	●				0.1 MEDs	0 to 199 MEDs	5%	0.1 MEDs	0 to 199 MEDs	5%
	UV Index	●				0.1	0 to 16	5%	0.1	0 to 16	5%
Temperature	Inside Temperature	✓	✓	✓	✓	0.1°F	32° to 140°F	1°F	0.1°C	0° to 60°C	0.5°C
	Outside Temperature	✓		✓	✓	0.1°F	-40° to +150°F	1°F	0.1°C	-40° to +65°C	0.5°C
	Soil or Water Temperature	●				1°F	-40° to +150°F	1°F	1°C	-40° to +65°C	0.5°C
	Outside Temp-Hum Index	✓				1°F	-40° to +135°F	3°F	1°C	-40° to +57°C	1.5°C
	Temp-Hum-Sun-Wind Index	●				1°F	-90° to +135°F	4°F	1°C	-68° to +64°C	2°C
	Wind Chill	✓		✓	✓	1°F	-110° to +130°F	2°F	1°C	-79° to +54°C	1°C
Time/Date	Time	✓	✓	✓	✓	1 minute	12 hours	8 sec/mo	1 minute	24 hours	8 sec/mo
	Date	✓	✓	✓	✓	month/day		8 sec/mo	day/month		8 sec/mo
	Sunrise & Sunset	✓				1 minute			1 minute		
Wind	Wind Direction	✓		✓	✓	1°	0° to 360°	4°	1°	0° to 360°	4°
				✓	✓	10°	0° to 360°	4°	10°	0° to 360°	4°
	Compass Rose	✓		✓	✓	22.5°	16 compass points	4°	22.5°	16 compass points	4°
	Wind Speed	✓		✓	✓	1 mph 1 knot	2 to 150 mph 2 to 130 knots	5%	0.1 m/s 1 km/hr	1 to 67 m/s, 3 to 241 km/hr	5%
	Direction of High Speed	✓				22.5°	16 compass points	4°	22.5°	16 compass points	4°

- Included
- Optional, shown on console
- Optional, requires WeatherLink. Growing degree-days also requires Ag/Turf Management Module

Unless listed separately, accuracy, resolution, and range are for Vantage Pro2 stations. Specifications for Perception, Wizard, and Monitor may be somewhat different. For complete specifications, visit our website at www.davisnet.com/links.

"Resolution" refers to the number of digits or decimal places displayed on the console. For metric units, this is not the actual unit of measure except for rainfall. Our rain collector measures in true 0.01" or 0.2 mm increments. All other weather variables are measured and accumulated in U.S. units of measure, which are then converted to metric units for display purposes.

Wizard and Monitor calculate and display wind chill according to the original National Weather Service Formula. A new formula was adopted in 2001. For wind chill using this formula, view the data using WeatherLink or choose Vantage Pro2 instead.

Extension Cables

Cable Connections

Standard 4- and 6-conductor cables include waterproof coupler kits for joining two cables together, indoors or out. To join standard 8-conductor cables, use an 8-pin cable coupler (for indoor use only). All cables may also be joined using Surge Protectors.

WeatherLink

The extension cables listed are for the serial port versions of WeatherLink. For USB versions of WeatherLink, add a USB extension cable, available from your local computer supplier. (Not available from Davis Instruments.)

Solar Radiation & UV Sensors

When sold separately, solar radiation and UV sensors include a 4' (1.2 m) cable. When sold pre-installed on a Vantage Pro2 Plus, the cable length is 3' (0.9 m).

Anemometer

For Wizard and Monitor, maximum wind speed reading decreases as length of cable from anemometer to console (including junction box cable) increases. At 140' (42 m), maximum speed is 175 mph (78 m/s). At 240' (73 m), maximum is 140 mph (62 m/s). At 340' (103 m), maximum is 70 mph (31 m/s). The accuracy of readings below the maximum is not affected.

7876-008 Standard 4-Conductor, 8' (2.4 m)	\$10
7876-040 Standard 4-Conductor, 40' (12 m)	\$18
7876-100 Standard 4-Conductor, 100' (30 m)	\$40
7876-200 Standard 4-Conductor, 200' (61 m)	\$70
7878-040 Standard 6-Conductor, 40' (12 m)	\$22
7880-025 Standard 8-Conductor, 25' (7.5 m)	\$15
7880-050 Standard 8-Conductor, 50' (15 m)	\$25
7880-100 Standard 8-Conductor, 100' (30 m)	\$45
7959 Eight-Pin Cable Coupler	\$5
7895-050 Shielded 4-Conductor, 50' (15 m)	\$25
7895-100 Shielded 4-Conductor, 100' (30 m)	\$48



Anemometers are wind-tunnel tested in our California factory.

Included Cable Length		Maximum Cable Length		Extension Cable to Use																			
Vantage Pro2	Wireless Vantage Pro2	40' (12 m)	540' (165 m) from anemometer to integrated sensor suite.	●	●	●	●																
	Cabled Vantage Pro2	40' (12 m)	540' (165 m) from anemometer to integrated sensor suite.	●	●	●	●																
		100' (30 m)	1000' (300 m) from console to integrated sensor suite.	●	●	●																	
	WeatherLink for Vantage Pro2	8' (2.5 m)	48' (14.6 m) from data logger to serial port.	●	●																		
	Solar Radiation Sensor	4' (1.2 m)	125' (38 m) from solar radiation sensor to integrated sensor suite.	●	●	●																	
UV Sensor	4' (1.2 m)	125' (38 m) from solar radiation sensor to integrated sensor suite.	●	●	●																		
Wizard & Monitor	Weather Wizard III	8' (2.4 m)	125' (38 m) from junction box to console.							●	●	●	●										
	Weather Monitor II	8' (2.4 m)	125' (38 m) from junction box to console.							●	●	●	●										
	Protected Junction Box	None	200' (60 m) from Protected Junction Box to console.											●	●	●	●						
	WeatherLink for Wiz/Mon	8' (2.4 m)	50' (15 m) from data logger to serial port.	●	●																		
	Anemometer	40' (12 m)	See note above.	●	●	●	●																
	Rain Collector	40' (12 m)	900' (270 m) from rain collector to console, including cable from junction box to console.	●	●	●	●																
	Temperature Sensor	25' (7.6 m)	300' (91 m) from sensor to console, including cable from junction box to console.	●	●	●	●																
	Temp/Humidity Sensor	40' (12 m)	300' (91 m) from sensor to console, including cable from junction box to console.								●												
	Rain Collector Heater	50' (15 m)	120' (36 m) from power unit to AC-power adapter. Requires terminal block.																		●	●	

NIST-Traceable Sensors

In the USA, the National Institute of Standards & Technology (NIST) develops and maintains the standards of measurement to which all others are ultimately traced. Numerous calibrations, tests, and measurement assurance programs are delivered directly to about 10,000 companies. From these companies, NIST-traceable intermediate service providers are the next link in a network that joins together the makers and users of precision instruments. Davis Instruments is proud to participate in this network. Each of our weather stations is carefully manufactured in our California factory. For those users who require NIST-traceability, certification and recertification of new and previously owned sensors is now available. For a NIST-certified Vantage Pro2 add \$200. Call, fax, or e-mail us for complete details.

Station Dimensions

Station Dimensions		Inches	Millimeters
Vantage Pro2	Console	9 1/2 x 6 x 1 1/2	240 x 150 x 38
	LCD Display	6 x 3 1/2	150 x 90
	ISS: Anemometer Side	14 1/2 x 5 1/4 x 17 1/2	370 x 130 x 445
	ISS: Rain Collector Side with Standard Radiation Shield	11 x 9 x 13 1/2	280 x 230 x 340
	ISS: Rain Collector Side with Fan-Aspirated Radiation Shield	13 x 9 x 20	330 x 230 x 510
	Leaf & Soil Moisture/ Temperature Station	5 x 2 1/2 x 7	130 x 60 x 180
	Temperature Station	5 x 2 1/2 x 7	130 x 60 x 180
	Temperature/Humidity Station	8 1/4 x 7 1/4 x 7 1/4	210 x 185 x 197
Wiz & Mon	Console	5 1/4 x 5 1/8 x 3	133 x 150 x 76
	LCD Display	4 1/4 x 1 1/4	108 x 45
	Junction Box	3 1/4 x 1 1/8 x 7 1/8	82 x 48 x 22

Surge Protector

For upgraded protection against lightning-induced power surges, power-cross conditions, and ground potential rises, use surge protectors with any of our cabled weather stations. See the chart for the number of protectors required for your installation. Stripping of wires is required.

7767 Surge Protector \$14

Surge Protector Shelter

Weather-resistant shelter for surge protectors (sold separately). Houses up to two surge protectors. Measures 3 1/2" x 5 3/4" x 2 1/4" (9 x 14.5 x 5.5 cm).

7768 Surge Protector Shelter \$18



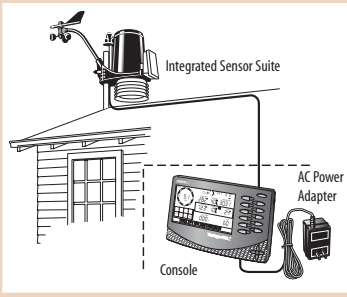
Current Draw & Battery Life*	Current Draw in milliamperes		Estimated Backup Battery Life in Days*		80-Amp Car Battery Life at normal temperatures
	lights off	lights on	without data logger	with data logger	
Wireless Vantage Pro2 Console/Receiver	0.9	160	274	274	> 4 years
Cabled Vantage Pro2 Console & Sensors	8	168	27	27	14 months
Perception II	7	127	2.5	1.0	6 to 9 months
Weather Wizard III	6	n/a	3.0	1.5	6 to 9 months
Weather Monitor II	7	127	2.5	1.0	6 to 9 months

* Actual battery life will vary depending on station setup and usage.

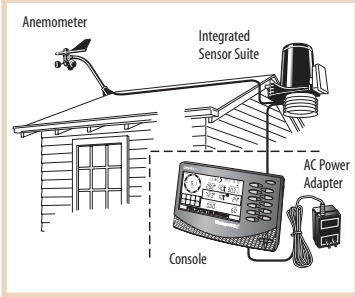
Number of Surge Protectors Required

Weather Station	Cable Run	Number of Surge Protectors
Vantage Pro2 or Pro2 Plus	Anemometer to Integrated sensor suite	2
	Integrated sensor suite to console	2
Weather Wizard III or Weather Monitor II	Temperature sensor to junction box	1
	Rain collector to junction box	1
	Anemometer to junction box	2
	Temp/hum sensor to junction box	3
	Junction box to console	4

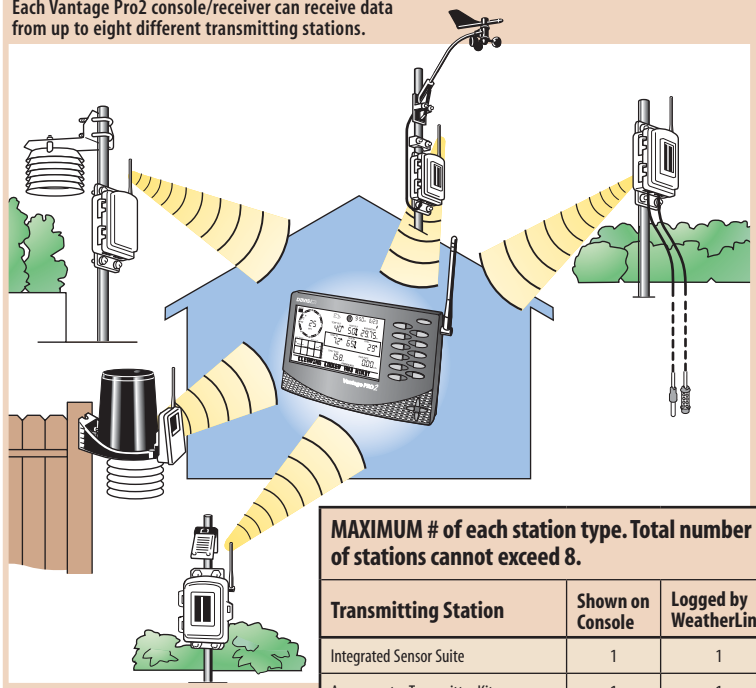
Cabled Vantage Pro2 Plus



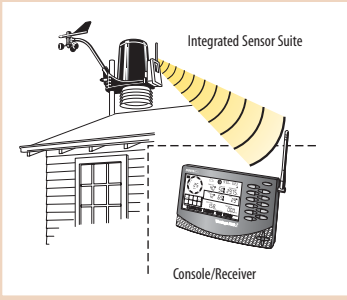
Remote Anemometer



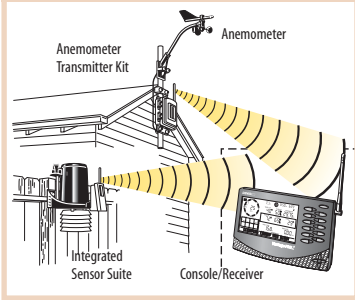
Each Vantage Pro2 console/receiver can receive data from up to eight different transmitting stations.



Wireless Vantage Pro2



Anemometer Transmitter Kit

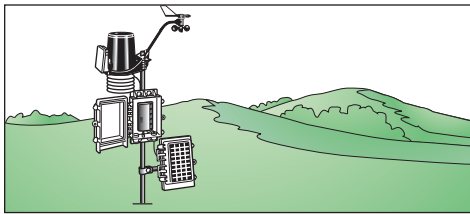


MAXIMUM # of each station type. Total number of stations cannot exceed 8.

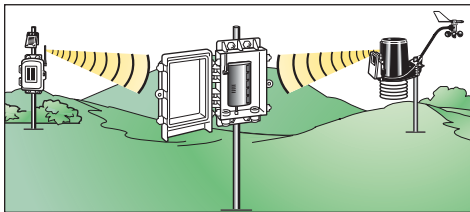
Transmitting Station	Shown on Console	Logged by WeatherLink
Integrated Sensor Suite	1	1
Anemometer Transmitter Kit	1	1
Leaf & Soil Moisture/Temperature	2*	2*
Temperature Station	8	3**
Temperature/Humidity Station	8	2**

* One fully-populated station or two partially-populated stations; see page 6.
 ** WeatherLink will log a maximum of 3 Temperature Stations or 1 Temperature Station and 2 Temperature/Humidity Stations.

Weather Envoy with a wireless or cabled field station

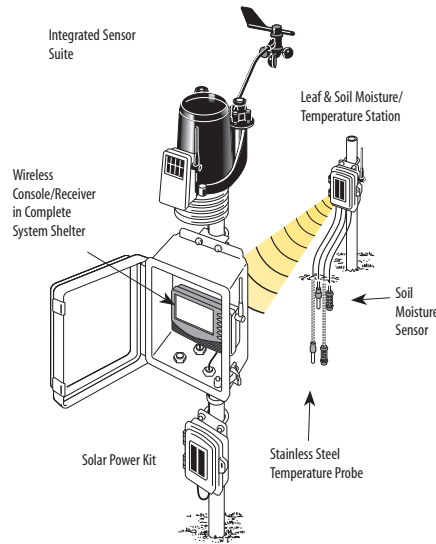


Cabled Field Station. With Multi-Purpose Shelter and 7707 Solar Power Kit.

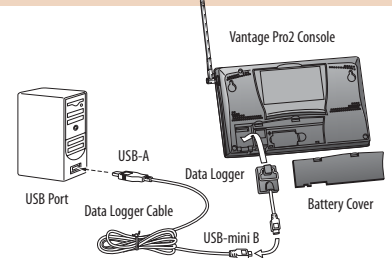


Wireless Field Station. Run on batteries or add our 6610 Solar Power Kit.

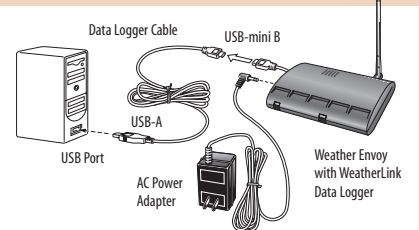
Field Station with Solar Power and Soil Moisture



WeatherLink for Vantage Pro2



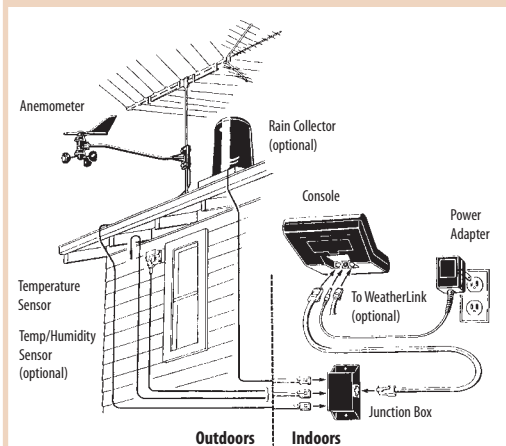
Wireless Weather Envoy



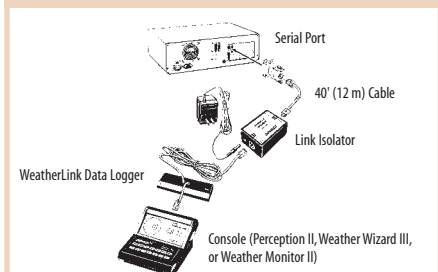
Weather Monitor II Components



Weather Monitor II Installation



Link Isolator Kit Installation



Things to consider when purchasing an electronic weather station.

1. What weather variables are measured and recorded?

Most other stations offer barometric pressure, outside humidity and dew point, daily and yearly rainfall, wind speed and direction, wind chill, and outside temperature. Some also offer inside temperature and humidity, and a few even give you extra outside temperatures and rain rate. Only Vantage Pro2 gives you all these, plus:

- Additional Rainfall Information: 15-minute, hourly, and monthly rainfall, and rainfall amounts for each of the last 24 storms.
- Additional Wind Speed Information: 10-minute average speed, direction of high speed, and 10-minute dominant wind direction.
- Apparent Temperature: Heat index and, with a solar radiation sensor, temperature-humidity-sun-wind index.
- Optional Solar and UV Radiation Sensors for greater awareness of the dangers of excessive exposure to the sun.
- For agricultural users, optional evapotranspiration, leaf wetness, soil moisture, and soil temperature.

2. How easy is it to set up?

With most competing stations, you need to install each sensor separately, which adds complication and takes time and effort. Vantage Pro2 is factory-assembled to make setup as easy as possible. Just complete a few minor assembly steps, insert the battery, and you're ready to mount the sensor suite. Mount the two sides together using our optional tripod, or detach the anemometer to mount it separately. Flexible mounting options make it easy, either way.

3. What is the maximum transmission distance?

The wireless transmission range for most competing stations is generally quite limited. Although range is highly variable (depending not only on the physical features of the land and structure but also on RF interference in the area), Vantage Pro2 will almost always outperform the competition. And—unlike the competition—we offer wireless repeaters should you wish to extend the range even further.

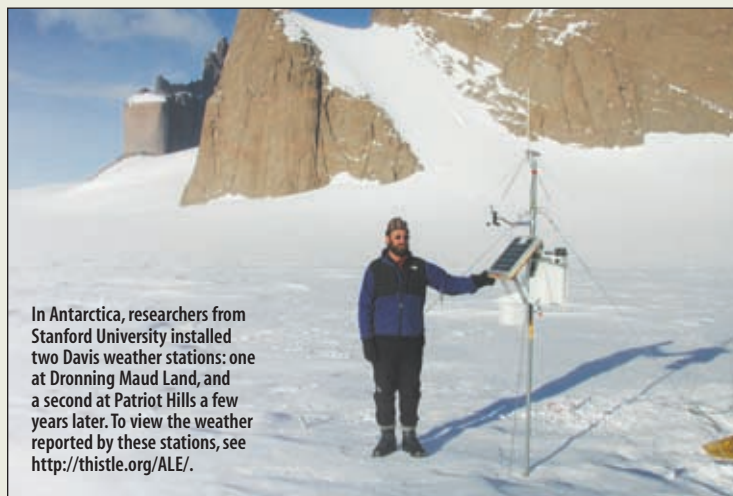
4. How many highs and lows are measured and recorded?

Most other stations simply give you the current readings. If highs and lows are available at all, they are usually quite limited. Only Vantage Pro2 gives you the highs and lows (and/or totals or averages) for just about all weather conditions, with time and/or date for the last 24 days, months, or years. No other station on

the market even comes close. And not only can you view the data numerically, you can also view on-screen graphs, for instant visual representations of long-term trends.

5. How often is the information updated?

The Vantage Pro2 transmitter sends data to the console every 2½ seconds. Highly variable conditions (such as wind speed and direction) are updated with each packet, while less variable conditions are updated every 10 seconds. With competing stations, the update interval is much longer: 30 seconds, or even up to 3 minutes. This may not seem important. But try watching the wind gust, or the rain suddenly



In Antarctica, researchers from Stanford University installed two Davis weather stations: one at Dronning Maud Land, and a second at Patriot Hills a few years later. To view the weather reported by these stations, see <http://thistle.org/ALE/>.

come pouring down. It's very disconcerting to look out the window, see something happen weather-wise, and not see it reflected on the console right away.

6. How is the forecast generated?

The competition generally bases their forecast on barometric pressure alone, which results in none too accurate a prediction. Vantage Pro2 uses a sophisticated forecasting algorithm which takes into account not only barometric pressure, but also wind, rainfall, temperature, humidity, and longitude and latitude. The result? A much more accurate forecast. Not perfect, but even the guys with the satellite pictures don't always get it right!

7. How is the forecast displayed?

Competing stations use icons to show the forecast. Vantage Pro2 has similar icons, plus over 80 different forecast messages that scroll across the bottom of the display. None of the other stations have this. The ticker tape also gives

additional information depending on which key you press. Press WIND to display wind speed, and you'll get a message showing the 10 minute average wind speed. If it's raining, press RAIN YR to see the last 15 minutes of rain, or RAIN DAY to see the last 24 hours of rain. And these are just a few examples! None of the competing stations have anything like this.

8. How much data can you graph on the screen?

With Vantage Pro2, you can graph just about every weather variable, with averages and highs and lows for most, and go back in time for minutes, days, months, and years. The competition typically graphs just one vari-

able—barometric pressure—and typically just for the last 24 hours. With all the graphs on Vantage Pro2, you can do tons of analysis, even without purchasing a software package. You'll find that the more dramatic the weather is, the more fun it is to look at the graphs. Just how windy is it, and how does it compare to the last wind storm? How much rain did we get this month, as compared to last month?

9. Can you use the station at higher elevations?

Our stations can be used up to 12,500 feet in elevation. Many competing stations are limited to 6,000 feet or below. If you're lucky enough to live and work—or perhaps enjoy a vacation home—in the mountains, you'll find that our Vantage Pro2 weather station works just fine, no matter what the elevation.

10. Is there a computer interface?

If you'd like to do even more analysis, add our WeatherLink data logger and software

package. The data logger stores data at the interval you choose (from one minute to two hours) for up to six months. Transfer the data whenever you like, or leave your computer on to have it transfer automatically every day. For some competing stations, no software package is available. Other stations do offer software, but don't include a data logger—so your PC must be on and the software running at all times.

11. How many alarms are there?

With Vantage Pro2, alarms can be set for just about every weather variable, for just about any reason imaginable—up to 70 alarms in all. The alarms found on competing stations are generally quite limited.

12. What is the accuracy, resolution, and range?

Vantage Pro2 generally beats the competition in accuracy, resolution, and range. It can be difficult to find the specs for competing stations. When we do find them, our testing shows that they are a bit, shall we say, optimistic. We are proud to publish our specs in our catalog and on our website, and stand behind them 100%.

13. How many people are using the stations?

There are many, many thousands of happy Davis weather station users around the country and around the world. Check out "Weather World 'Round" on our website (www.davisnet.com/links), and you'll see a listing for Norman, Oklahoma. Click on the link, and you'll go to the website for the National Weather Service's Storm Prediction Center. They're using our Weather Monitor II to update the local "unofficial" weather conditions to their website. Many other Davis weather station owners participate as volunteer observers for the National Weather Service, the National Hurricane Center, and numerous local TV and radio stations.

14. How long has the company been in business?

In business since 1963, Davis Instruments opened up the home weather station market back in 1989. Our weather stations are manufactured right here in Hayward, California, and we have a full customer service and support staff. Most competing stations are made overseas, and it can be difficult (if not impossible) to get any kind of customer service or aftermarket support.

With Vantage Pro2, you get highs and lows (and/or totals or averages) for just about all weather conditions with time and/or date for the last 24 days, months, or years.	BAR	HUMIDITY				RAIN			TEMPERATURE				WIND			WITH OPTIONAL SENSORS						
	Barometric Pressure	Inside Humidity	Outside Humidity	Dew Point	Rainfall Amount	Rain Storm Amount	Rain Rate	Inside Temperature	Outside Temperature	Heat Index	Wind Chill	Wind Speed	Wind Direction	Direction of High Speed	Evapotranspiration	Humidity (Extra)	Leaf Wetness	Soil Moisture	Solar Radiation	Temperature (Extra)	Temp-Hum-Sun-Wind	UV Radiation
Update Interval *	15 min	1 min	50 sec	10 sec	10 sec	10 sec	1 min	10 sec	10 sec	10 sec	2½ sec	2½ sec	2½ sec	1 hour	50 sec	15 sec	60 sec	50 sec	10 sec	10 sec	50 sec	50 sec
CONSOLE DISPLAYS																						
Reading at end of update interval	•	•	•	•				•	•	•	•		•		•	•	•	•	•	•	•	•
Total amount for the interval					•	•								•								•
Average reading for the interval												•										
High reading for the interval							•															
SET ALARMS for																						
Special Alarms	①				②	③							④									⑥
High Reading		•	•	•			•	•	•	•		•			•	•	•	•	•	•	•	•
Low Reading		•	•	•				•	•		•				•	•	•		•			
DISPLAYED but not graphed																						
Current Year High	•	•	•	•				•	•						•	•	•		•			
Current Year Low	•	•	•	•				•		•					•	•	•		•			
GRAPHED & DISPLAYED for last 24 of each of the following																						
EOP	End-of-15-Minute Period Readings	•																				
	End-of-Hour Period Readings	•	•	•	•				•	•	•					•	•				•	
TOTALS	15-minute Period Totals					•																
	Hourly Totals					•									•							•
	Daily Totals					•									•							•
	Monthly Totals					•									•							
	Storm Totals (with start & end date)						•															
	Yearly Totals					•									•							
AVERAGES	10-Minute Averages											•										
	Hourly Averages or Dominant											•	•				•				•	
	Daily Averages or Dominant												•	•								
	Monthly Averages or Dominant												•	•								
	Yearly Averages													•								
HIGHS	One-Minute Highs						•															
	Hourly Highs						•					•										
	Daily Highs	•	•	•	•		•	•	•	•		•			•	•	•		•	•	•	•
	Monthly Highs	•	•	•	•		•	•	•	•		•			•	•	•		•	•	•	•
	Yearly Highs						•		•			•										
LOWS	Hourly Lows											•										
	Daily Lows	•	•	•	•			•	•		•				•	•						
	Monthly Lows	•	•	•	•			•	•		•				•	•						
	Yearly Low								•													

* Update interval may vary depending on station ID and type of station.

SPECIAL ALARMS

- ① Storm Warning: Amount of barometric pressure fall. Storm Clearing: Amount of barometric pressure rise.
- ② Flash Flood Warning: 15-minute rainfall amount. 24-Hour Rain Alarm: 24-hour rainfall amount.
- ③ Rainstorm Alarm: Rainfall amount for current storm.

- ④ 10-Minute Average Wind Speed Alarm
- ⑤ Daily Evapotranspiration Amount Alarm
- ⑥ Daily UV Dose Alarm

Warranty

We warrant our products to be free of defects in material and workmanship for one year from date of original purchase. While we make every effort to carefully manufacture our products to the highest standards of quality, occasionally parts may be found to be missing, defective, or damaged. If you have a defective part, return the product to us, shipping charges prepaid. Include proof of purchase and a written explanation of the trouble. During the warranty period, we will, at our option, either repair or replace the product free of charge. This warranty does not cover damage due to improper installation or use, lightning, negligence, accident, or unauthorized service, or to incidental or consequential damages beyond the Davis products themselves. Implied warranties are limited in duration to the life of this limited warranty. Some states do not allow limitations on how long an implied warranty lasts, or the exclusion or limitation of incidental and consequential damages, so the above limitation may not apply to you. This warranty gives you specific legal rights. You may have other rights, which vary from state to state or country to country.

Details, specifications, and prices are subject to change at any time without notice.



Weather Forecasting Card

Discusses the use of wind direction, barometric pressure, and cloud type in predicting the weather. Includes full list of radio weather stations for official broadcasts, plus key information on storm warnings, hurricane avoidance, navigating in fog and other hazardous conditions, and more. Weatherproof high-strength plastic, full color both sides. Punched for binder or bulkhead mounting. Dimensions: 8½" x 11" (216 x 279 mm).

131 Weather Forecasting Card \$9⁹⁵

Davis Hat

Now you can get your own Davis hat! Baseball-style cap is 100% cotton twill. Two-toned with washed khaki crown, dark-colored brim, and embroidered Davis logo. Self-fabric closure with brass buckle. One size fits all.



PR725 Davis Hat \$12

Vantage PRO2™

- **Transmits weather data wirelessly up to 1000'**— that's over 3 times the distance of competing stations!
- **Now transmit even further— for miles on end—** with our new long-range repeaters. See page 9.
- **Turn your sprinkler system or a heater or fan on and off** using data from your weather station. See page 13.

- **Barometric Pressure.** Currently and for each of the last 24 hours. Five-position trend arrow shows whether pressure is rising, falling, or stable.
- **Temperature.** Inside and outside temperature, currently and for each of the last 24 hours. High and low temperature alarms.
- **Humidity.** Inside and outside humidity, currently and for each of the last 24 hours. High and low humidity alarms.
- **Rain.** Rainfall for the last 15 minutes and the last 24 hours, days, months, and years. Flash flood and 24-hour rain alarms.
- **Rain Rate.** Currently and for each of the last 24 minutes. Rain rate alarm.
- **Rain Storm.** Rainfall for the last 24 storms, with beginning and ending dates for each storm. Rain storm warning and alarm.
- **Wind Speed.** Current wind speed. Average for the last ten minutes and each of the last 24 hours. High and average wind speed alarms.
- **Wind Direction.** Currently and for the last 24 hours, days, and months. Direction of high wind speed.
- **Wind Chill.** Current wind chill. Wind chill alarm.
- **Dew Point.** Currently and for each of the last 24 hours. High and low dew point alarms.
- **Heat Index.** Currently and for each of the last 24 hours. Heat index alarm.
- **Sunrise & Sunset.** Time of sunrise and sunset at your location—it even takes daylight savings time into account!
- **Highs & Lows.** For most weather variables, with time and/or date, for each of the last 24 hours, days, months, and years.
- **Optional Sensors.** For UV and solar radiation, evapotranspiration, soil moisture, and more.
- **On-screen graphing.** Graph current conditions, averages, or highs and lows for the last 24 hours, days, months, or years.
- **Your own local forecast.** Forecast icons show sun, part sun, clouds and rain, or snow. Check the scrolling ticker-tape for more details.

**All this—and much more—
in a station that's easy to
set up and fun to use.**



Davis
Davis Instruments

3465 Diablo Avenue, Hayward, CA 94545-2778

FORWARDING SERVICE REQUESTED